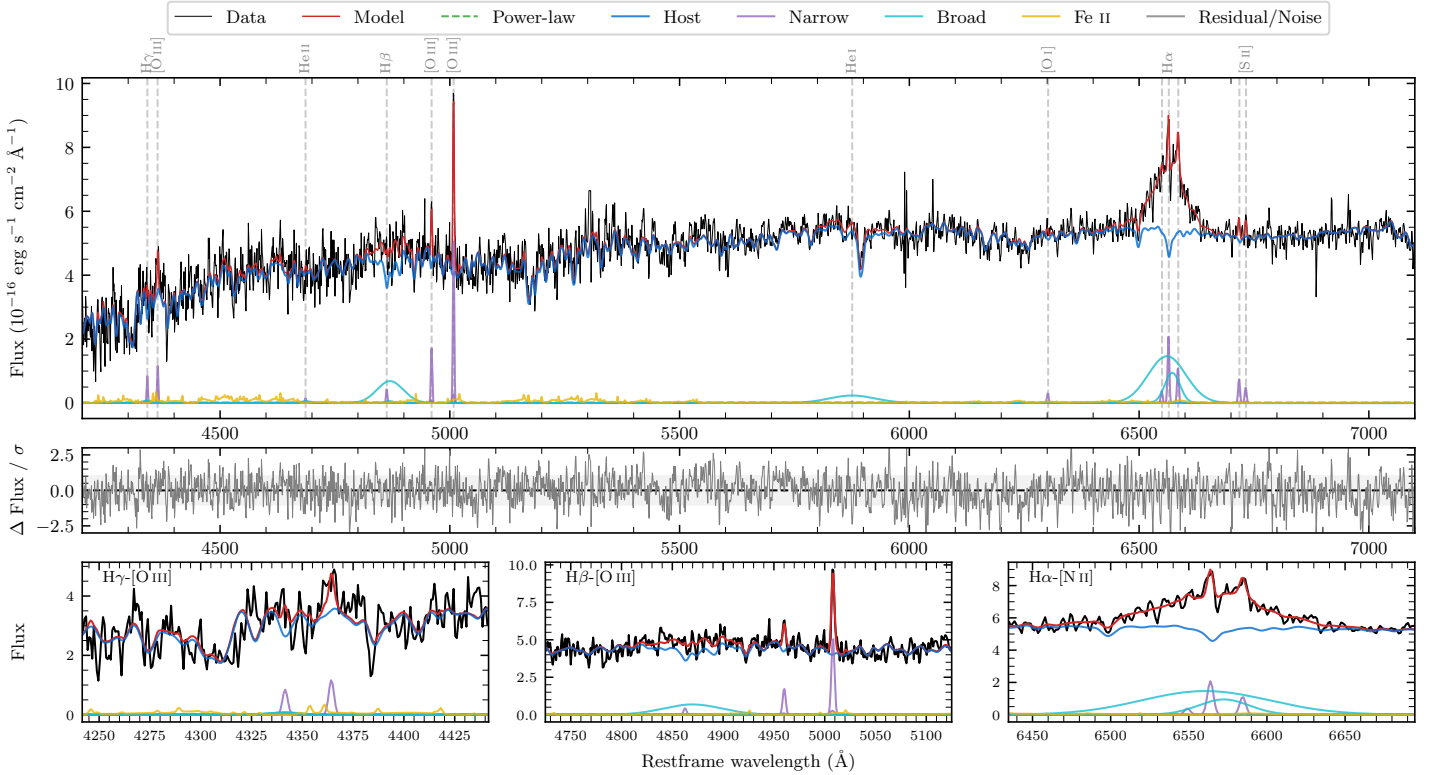
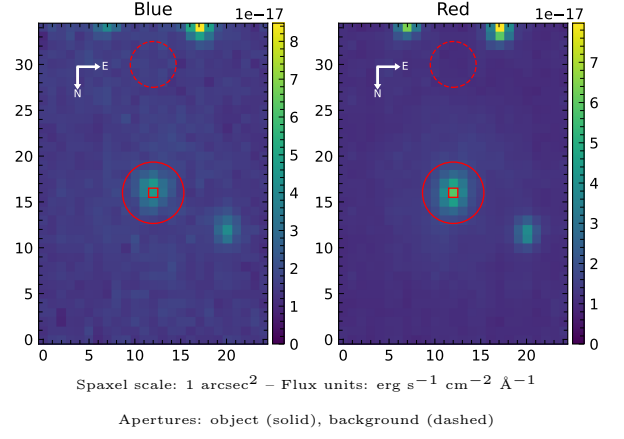


LEDA 287932

Spectrum ID	403608949_sp2	Spectrum type	Sy 1.2
Alt name	g1655515-680937	Quality flag	good
z	0.0518	AGN reference	6dFGS
RA, Dec	253.9647, -68.1601	MW $E(B-V)$	0.071
MJD	60163.4	Power law α_ν	-1.89 ± 0.12
SNR/ \AA B/R	9.3/20.8	$\log L_{5100, \text{AGN}}$	40.65 ± 0.63
Obs airmass	1.25	$\log H\beta_{\text{Br}}/[\text{O III}]$	0.39 ± 0.06
SMSS ID	403608949	$\log M_{L5100}/M_\odot$	6.64 ± 0.28
Neighbour	7.9", 403608948	$\log M_{H\alpha}/M_\odot$	6.94 ± 0.06
SMSS $\langle r_{6''}^{\text{ap}} \rangle$	16.82 ± 0.09	$\log M_{H\beta}/M_\odot$	7.36 ± 0.08
2MASS K_{ext}	12.22 ± 0.11	$\log M_{[\text{O III}]} / M_\odot$	7.28 ± 0.08



Emission Line Measurements

Line	$\log L$ (erg s^{-1})	FWHM (km s^{-1})	σ (km s^{-1})	EW (\AA)
H γ Narrow	39.32 ± 0.24	220 ± 63	91 ± 25	225.24 ± 80.03
Hγ Broad	—	—	—	—
[O III] 4364	39.41 ± 0.17	215 ± 62	88 ± 25	293.52 ± 71.97
He II Narrow	—	—	—	—
He II Broad	—	—	—	—
H β Narrow	39.07 ± 0.32	220 ± 63	91 ± 25	130.71 ± 66.49
Hβ Broad	40.54 ± 0.06	3894 ± 234	1490 ± 27	3978.19 ± 292.30
[O III] 5007	40.15 ± 0.03	220 ± 63	91 ± 25	1633.29 ± 72.27
He I Narrow	—	—	—	—
He I Broad	40.30 ± 0.08	5990 ± 62	2544 ± 25	2356.29 ± 260.61
[O I] 6300	38.98 ± 0.25	215 ± 62	88 ± 25	113.23 ± 39.61
H α Narrow	39.83 ± 0.05	215 ± 62	88 ± 25	816.88 ± 50.12
Hα Broad	41.11 ± 0.01	3088 ± 191	1412 ± 29	15336.16 ± 214.64
[N II] 6585	39.56 ± 0.09	215 ± 62	88 ± 25	441.36 ± 48.52
[S II] 6718	39.40 ± 0.11	215 ± 62	88 ± 25	303.46 ± 42.14
[S II] 6732	39.21 ± 0.17	215 ± 62	88 ± 25	198.29 ± 41.58

Emission Summary

H α broad SNR	5.22
H β broad SNR	1.72
H γ broad SNR	0.50
AGN frac	0.00
Host frac	1.00
$\log L_{5100, \text{Host}}$	43.14
Fe II/H β	0.61
Fe II/[O III]	1.49

Quality Flags

spurious_hab/hbb	0/0
15100	2
balmer	1
balmer_snr	2
hb_width	0
balmer_width	0