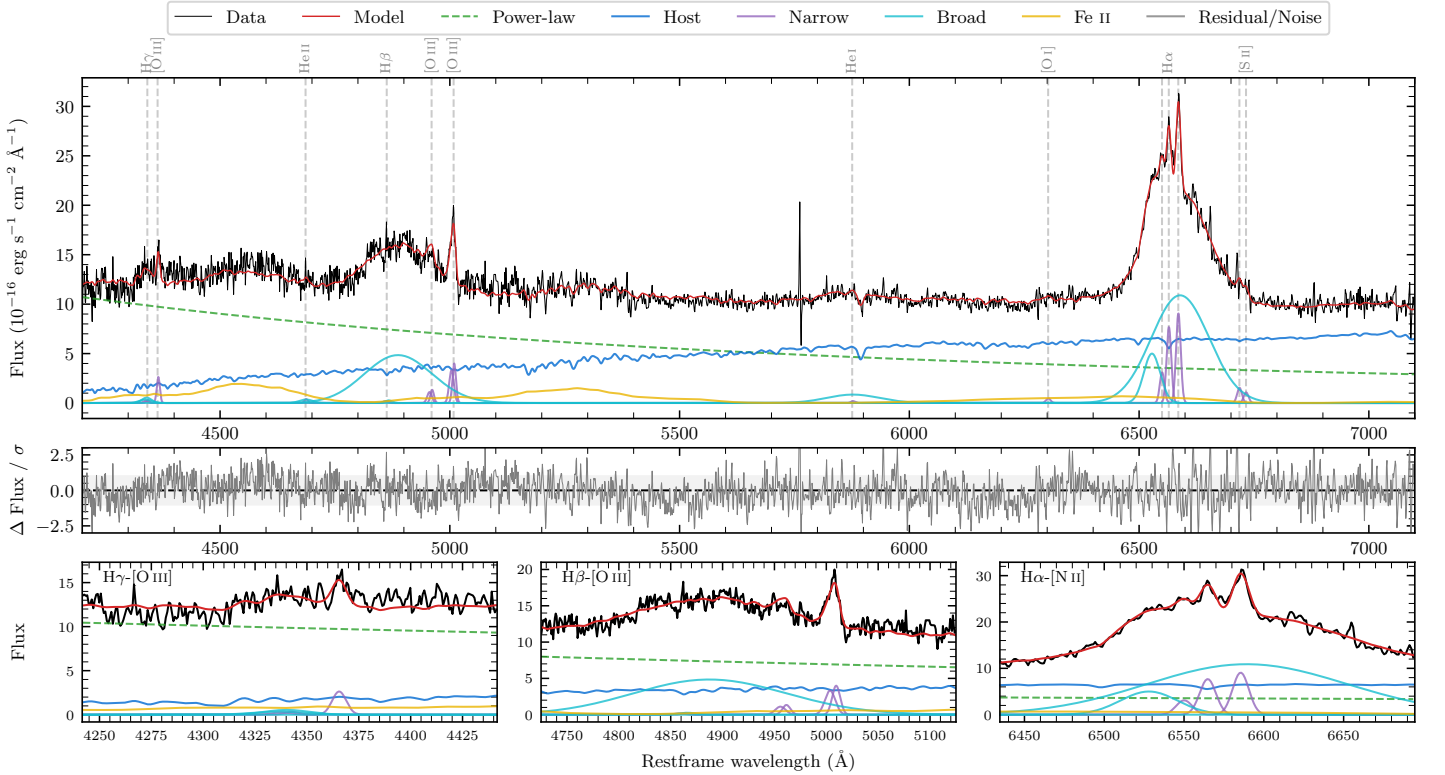
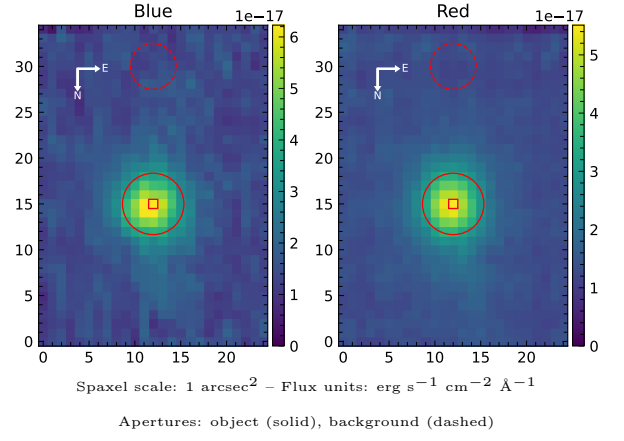


LEDA 163530

Spectrum ID	3979095_sp1	Spectrum type	Sy 1.0
Alt name	g2158596-175245	Quality flag	good
z	0.0938	AGN reference	6dFGS
RA, Dec	329.7485, -17.8793	MW $E(B - V)$	0.039
MJD	60091.77	Power law α_ν	0.48 ± 0.01
SNR/ \AA B/R	14.2/20.6	$\log L_{5100, \text{AGN}}/M_\odot$	43.87 ± 0.01
Obs airmass	1.07	$\log H\beta_{\text{Br}}/[\text{O III}]$	1.05 ± 0.03
SMSS ID	3979095	$\log M_{L5100}/M_\odot$	8.89 ± 0.02
Neighbour	6.3", 2006997536	$\log M_{\text{H}\alpha}/M_\odot$	8.61 ± 0.03
SMSS $\langle r_{6''}^{\text{ap}} \rangle$	15.79 ± 0.16	$\log M_{\text{H}\beta}/M_\odot$	9.02 ± 0.02
2MASS K_{ext}	11.65 ± 0.05	$\log M_{[\text{O III}]} / M_\odot$	8.69 ± 0.03



Emission Line Measurements

Line	$\log L$ (erg s ⁻¹)	FWHM (km s ⁻¹)	σ (km s ⁻¹)	EW (Å)
H γ Narrow	40.13 ± 0.45	770 ± 67	322 ± 25	0.62 ± 0.35
Hγ Broad	40.87 ± 0.17	1873 ± 130	705 ± 50	2.83 ± 0.60
[O III] 4364	40.73 ± 0.10	548 ± 63	232 ± 25	2.51 ± 0.34
He II Narrow	39.95 ± 0.43	548 ± 63	232 ± 25	0.50 ± 0.33
He II Broad	40.49 ± 0.30	2157 ± 64	916 ± 26	1.72 ± 0.66
H β Narrow	39.98 ± 0.46	770 ± 67	322 ± 25	0.59 ± 0.48
Hβ Broad	42.34 ± 0.01	10490 ± 232	3889 ± 25	134.52 ± 2.16
[O III] 5007	41.29 ± 0.03	770 ± 67	322 ± 25	12.73 ± 0.51
He I Narrow	39.74 ± 0.41	548 ± 63	232 ± 25	0.53 ± 0.36
He I Broad	41.47 ± 0.04	6882 ± 63	2922 ± 25	28.89 ± 1.43
[O I] 6300	40.15 ± 0.22	548 ± 63	232 ± 25	1.66 ± 0.51
H α Narrow	41.37 ± 0.02	548 ± 63	232 ± 25	30.31 ± 0.67
Hα Broad	42.67 ± 0.01	7047 ± 78	2482 ± 25	604.56 ± 2.28
[N II] 6585	41.44 ± 0.02	548 ± 63	232 ± 25	36.20 ± 0.68
[S II] 6718	40.68 ± 0.08	548 ± 63	232 ± 25	6.61 ± 0.68
[S II] 6732	40.53 ± 0.10	548 ± 63	232 ± 25	4.64 ± 0.68

Emission Summary

H α broad SNR	13.89
H β broad SNR	5.75
H γ broad SNR	1.23
AGN frac	0.64
Host frac	0.36
$\log L_{5100, \text{Host}}$	43.61
Fe II/H β	0.50
Fe II/[O III]	5.64

Quality Flags

spurious_hab/hbb	0/0
15100	2
balmer	0
balmer_snr	1
hb_width	0
balmer_width	0