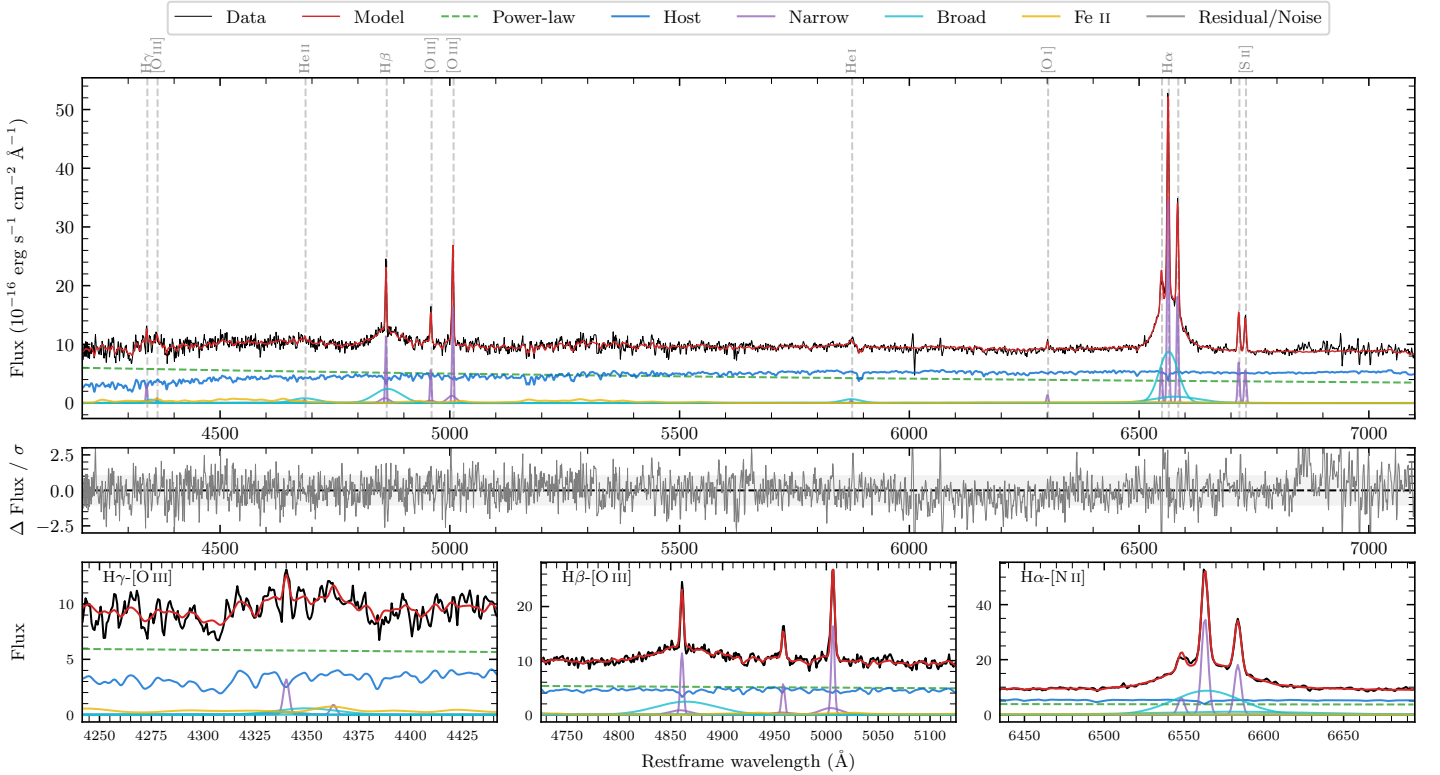
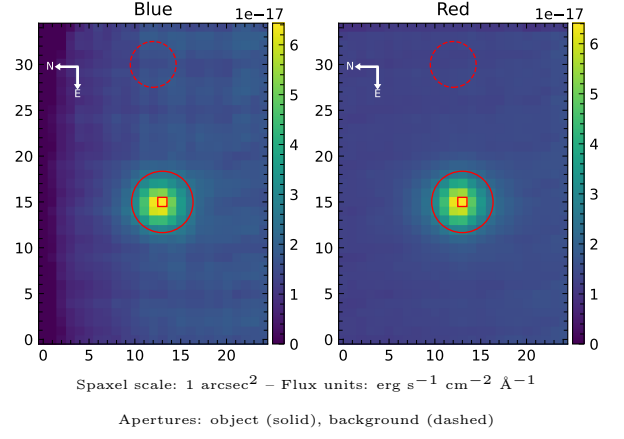


LEDA 958725

Spectrum ID	3971217_sp1	Spectrum type	Sy 1.5
Alt name	g2147133-120126	Quality flag	good
z	0.0483	AGN reference	6dFGS
RA, Dec	326.8053, -12.0238	MW $E(B - V)$	0.043
MJD	60090.75	Power law α_ν	-0.96 ± 0.20
SNR/ \AA B/R	16.0/21.9	$\log L_{5100, \text{AGN}}$	43.14 ± 0.03
Obs airmass	1.14	$\log H\beta_{\text{Br}}/[\text{O III}]$	0.26 ± 0.03
SMSS ID	3971217	$\log M_{L5100}/M_\odot$	7.75 ± 0.04
Neighbour	None $< 15''$	$\log M_{\text{H}\alpha}/M_\odot$	7.00 ± 0.03
SMSS $\langle r_6''_{\text{ap}} \rangle$	16.23 ± 0.05	$\log M_{\text{H}\beta}/M_\odot$	7.61 ± 0.05
2MASS K_{ext}	12.79 ± 0.11	$\log M_{[\text{O III}]} / M_\odot$	7.61 ± 0.05



Emission Line Measurements

Line	$\log L$ (erg s ⁻¹)	FWHM (km s ⁻¹)	σ (km s ⁻¹)	EW (Å)
H γ Narrow	39.97 ± 0.09	241 ± 63	349 ± 32	2.91 ± 0.58
Hγ Broad	40.20 ± 0.14	2307 ± 316	825 ± 58	4.59 ± 0.76
[O III] 4364	39.26 ± 0.28	226 ± 62	95 ± 25	0.57 ± 0.22
He II Narrow	39.15 ± 0.30	226 ± 62	95 ± 25	0.47 ± 0.23
He II Broad	40.51 ± 0.07	4094 ± 105	1739 ± 44	10.85 ± 0.99
H β Narrow	40.57 ± 0.03	241 ± 63	350 ± 32	13.01 ± 0.56
Hβ Broad	41.02 ± 0.02	4069 ± 153	1543 ± 37	36.15 ± 0.98
[O III] 5007	40.76 ± 0.02	241 ± 63	350 ± 32	20.55 ± 0.56
He I Narrow	39.18 ± 0.24	226 ± 62	95 ± 25	0.64 ± 0.20
He I Broad	40.31 ± 0.07	2607 ± 83	1107 ± 34	8.87 ± 0.75
[O I] 6300	39.60 ± 0.09	226 ± 62	95 ± 25	1.81 ± 0.22
H α Narrow	41.03 ± 0.01	226 ± 62	95 ± 25	50.95 ± 0.36
Hα Broad	41.54 ± 0.01	2424 ± 70	1019 ± 37	166.40 ± 1.30
[N II] 6585	40.74 ± 0.01	226 ± 62	95 ± 25	26.36 ± 0.32
[S II] 6718	40.33 ± 0.02	226 ± 62	95 ± 25	10.45 ± 0.26
[S II] 6732	40.25 ± 0.02	226 ± 62	95 ± 25	8.69 ± 0.27

Emission Summary

H α broad SNR	14.92
H β broad SNR	3.89
H γ broad SNR	1.20
AGN frac	0.53
Host frac	0.47
$\log L_{5100, \text{Host}}$	43.09
Fe II/H β	0.90
Fe II/[O III]	1.63

Quality Flags

spurious_hab/hbb	0/0
15100	0
balmer	0
balmer_snr	1
hb_width	0
balmer_width	0