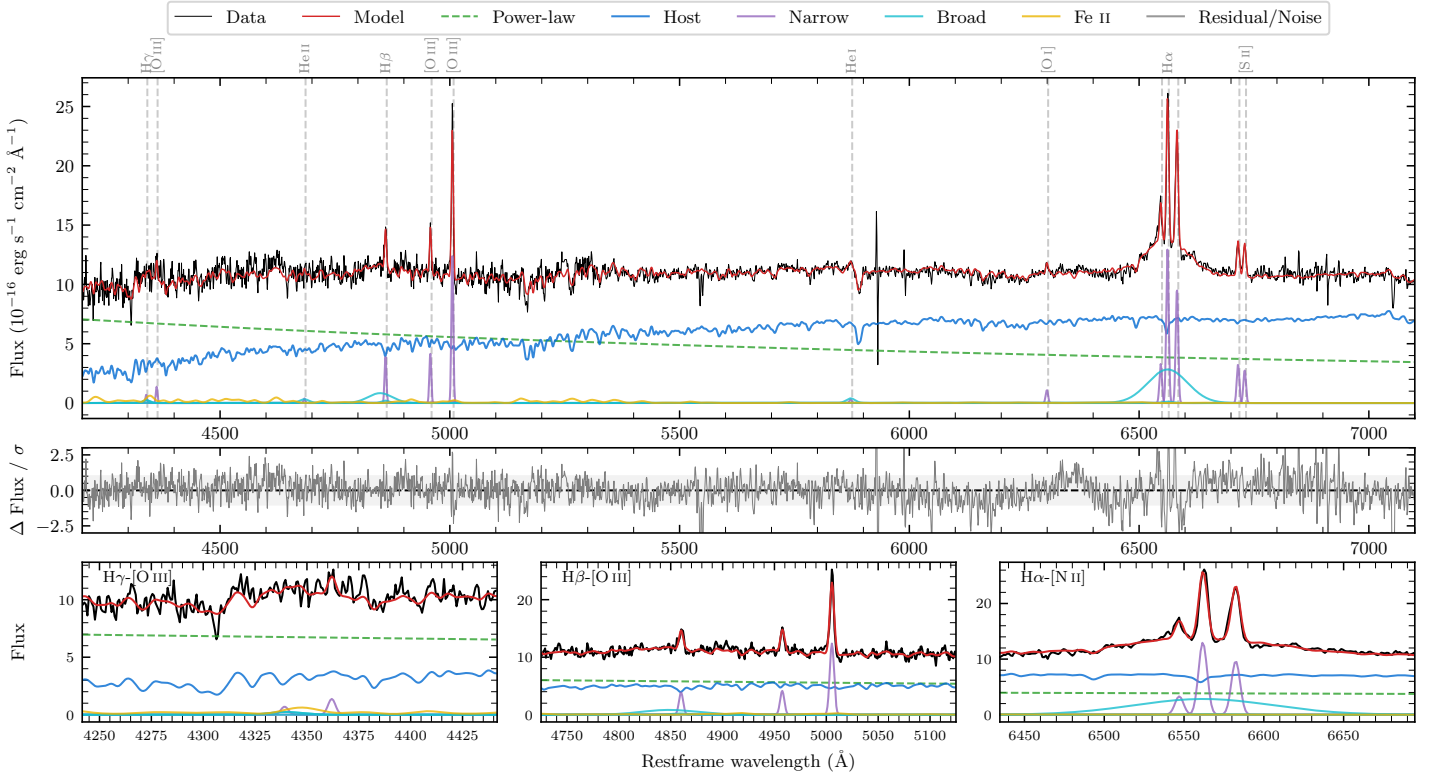
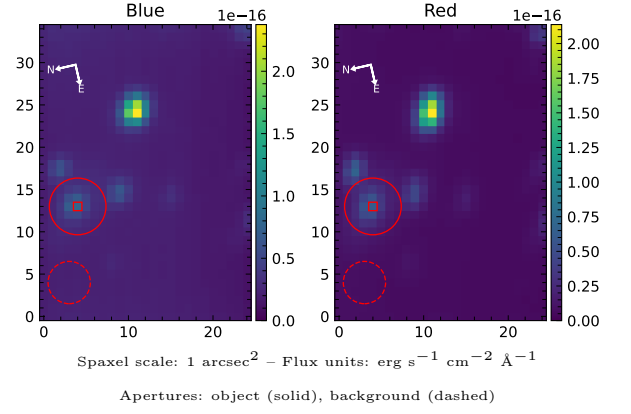


6dFGS gJ172134.2–544315

Spectrum ID	370411405_sp1	Spectrum type	Sy 1.5
Alt name	g1721342–544315	Quality flag	good
z	0.0621	AGN reference	6dFGS
RA, Dec	260.3925, –54.7209	MW $E(B - V)$	0.163
MJD	59019.55	Power law α_ν	-0.64 ± 0.12
SNR/ \AA B/R	14.5/30.4	$\log L_{5100, \text{AGN}}$	43.41 ± 0.02
Obs airmass	1.09	$\log H\beta_{\text{Br}}/[\text{O III}]$	-0.05 ± 0.08
SMSS ID	370411405	$\log M_{L5100}/M_\odot$	7.72 ± 0.09
Neighbour	1.6", 2540816648	$\log M_{\text{H}\alpha}/M_\odot$	7.50 ± 0.03
SMSS $\langle r_{6''}^{\text{ap}} \rangle$	nan \pm nan	$\log M_{\text{H}\beta}/M_\odot$	7.35 ± 0.11
2MASS K_{ext}	12.30 ± 0.10	$\log M_{[\text{O III}]} / M_\odot$	7.49 ± 0.10



Emission Line Measurements

Line	$\log L$ (erg s ⁻¹)	FWHM (km s ⁻¹)	σ (km s ⁻¹)	EW (Å)
H γ Narrow	39.52 ± 0.36	294 ± 63	142 ± 29	0.51 ± 0.42
Hγ Broad	—	—	—	—
[O III] 4364	39.79 ± 0.21	296 ± 62	124 ± 25	0.98 ± 0.28
He II Narrow	39.29 ± 0.44	296 ± 62	124 ± 25	0.34 ± 0.26
He II Broad	39.92 ± 0.32	1576 ± 62	669 ± 25	1.46 ± 0.64
H β Narrow	40.31 ± 0.07	294 ± 63	142 ± 29	3.75 ± 0.45
Hβ Broad	40.78 ± 0.08	3420 ± 369	1296 ± 37	10.81 ± 1.03
[O III] 5007	40.83 ± 0.02	294 ± 63	142 ± 29	12.75 ± 0.50
He I Narrow	39.27 ± 0.37	296 ± 62	124 ± 25	0.44 ± 0.19
He I Broad	39.98 ± 0.16	1179 ± 62	500 ± 25	2.29 ± 0.40
[O I] 6300	39.85 ± 0.09	296 ± 62	124 ± 25	1.86 ± 0.22
H α Narrow	40.94 ± 0.01	296 ± 62	124 ± 25	24.37 ± 0.30
Hα Broad	41.49 ± 0.01	4502 ± 129	1713 ± 25	85.30 ± 1.05
[N II] 6585	40.81 ± 0.01	296 ± 62	124 ± 25	18.23 ± 0.27
[S II] 6718	40.35 ± 0.03	296 ± 62	124 ± 25	6.47 ± 0.26
[S II] 6732	40.28 ± 0.04	296 ± 62	124 ± 25	5.45 ± 0.26

Emission Summary

H α broad SNR	4.33
H β broad SNR	1.53
H γ broad SNR	0.89
AGN frac	0.52
Host frac	0.48
$\log L_{5100, \text{Host}}$	43.38
Fe II/H β	1.19
Fe II/[O III]	1.05

Quality Flags

spurious_hab/hbb	0/0
15100	0
balmer	1
balmer_snr	2
hb_width	0
balmer_width	2