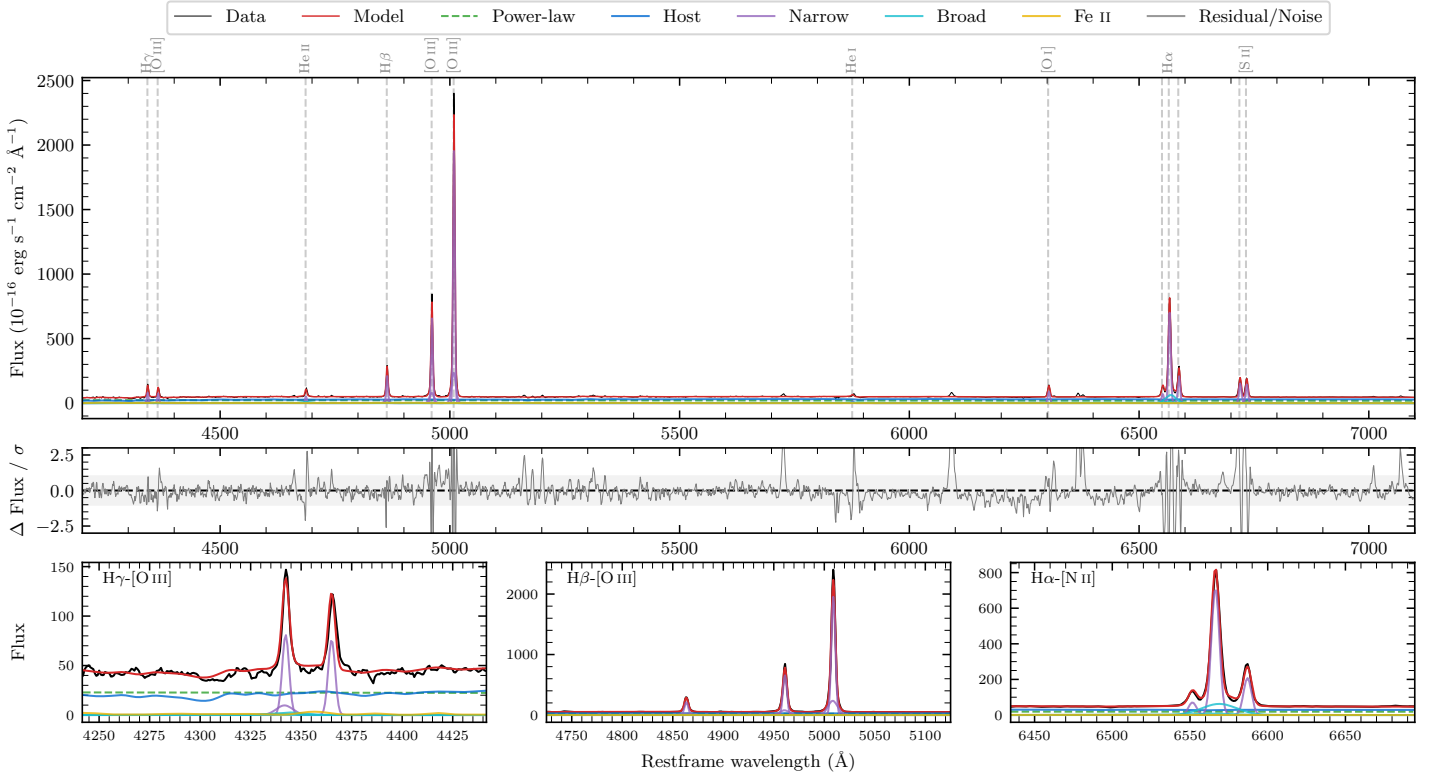
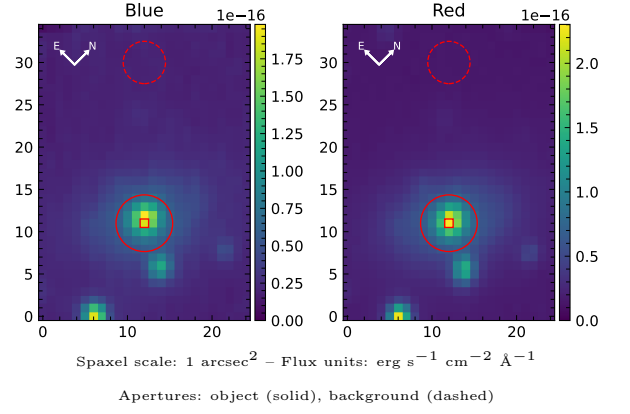


# ESO138–G01

Spectrum ID	369182295_sp1	Spectrum type	Sy 2
Alt name	ESO138–G01	Quality flag	good
$z$	0.0091	AGN reference	<a href="#">S7</a>
RA, Dec	252.8338, –59.2300	MW $E(B - V)$	0.169
MJD	60911.41	Power law $\alpha_\nu$	$-1.54 \pm 0.28$
SNR/ $\text{\AA}$ B/R	7.8/12.7	$\log L_{5100, \text{AGN}}$	$42.30 \pm 0.05$
Obs airmass	1.16	$\log H\beta_{\text{Br}}/[\text{O III}]$	–
SMSS ID	<a href="#">369182295</a>	$\log M_{L5100}/M_\odot$	–
Neighbour	5.3", <a href="#">369182294</a>	$\log M_{H\alpha}/M_\odot$	–
SMSS $\langle r_6'' \text{ap} \rangle$	$14.71 \pm 0.05$	$\log M_{H\beta}/M_\odot$	–
2MASS $K_{\text{ext}}$	nan $\pm$ nan	$\log M_{[\text{O III}]} / M_\odot$	–



## Emission Line Measurements

Line	$\log L$ ( $\text{erg s}^{-1}$ )	FWHM ( $\text{km s}^{-1}$ )	$\sigma$ ( $\text{km s}^{-1}$ )	EW ( $\text{\AA}$ )
H $\gamma$ Narrow	$39.92 \pm 0.03$	$293 \pm 63$	$170 \pm 26$	$19.76 \pm 1.09$
<b>H<math>\gamma</math> Broad</b>	–	–	–	–
[O III] 4364	$39.78 \pm 0.04$	$276 \pm 63$	$117 \pm 25$	$14.49 \pm 0.77$
He II Narrow	$39.63 \pm 0.05$	$276 \pm 63$	$117 \pm 25$	$10.73 \pm 0.62$
<b>He II Broad</b>	<b><math>39.59 \pm 0.12</math></b>	<b><math>1435 \pm 77</math></b>	<b><math>609 \pm 32</math></b>	<b><math>10.15 \pm 1.31</math></b>
H $\beta$ Narrow	$40.39 \pm 0.02$	$293 \pm 63$	$170 \pm 26$	$61.32 \pm 1.03$
<b>H<math>\beta</math> Broad</b>	–	–	–	–
[O III] 5007	$41.36 \pm 0.01$	$293 \pm 63$	$170 \pm 26$	$588.20 \pm 1.74$
He I Narrow	$39.16 \pm 0.12$	$276 \pm 63$	$117 \pm 25$	$3.96 \pm 0.46$
<b>He I Broad</b>	<b><math>39.31 \pm 0.17</math></b>	<b><math>1186 \pm 63</math></b>	<b><math>503 \pm 25</math></b>	<b><math>5.61 \pm 1.24</math></b>
[O I] 6300	$40.00 \pm 0.02$	$276 \pm 63$	$117 \pm 25$	$28.78 \pm 0.59$
H $\alpha$ Narrow	$41.04 \pm 0.01$	$276 \pm 63$	$117 \pm 25$	$246.43 \pm 0.99$
<b>H<math>\alpha</math> Broad</b>	–	–	–	–
[N II] 6585	$40.51 \pm 0.01$	$276 \pm 63$	$117 \pm 25$	$72.05 \pm 0.66$
[S II] 6718	$40.27 \pm 0.01$	$276 \pm 63$	$117 \pm 25$	$54.01 \pm 0.61$
[S II] 6732	$40.25 \pm 0.01$	$276 \pm 63$	$117 \pm 25$	$51.93 \pm 0.64$

## Emission Summary

H $\alpha$ broad SNR	0.00
H $\beta$ broad SNR	0.00
H $\gamma$ broad SNR	0.00
AGN frac	0.44
Host frac	0.56
$\log L_{5100, \text{Host}}$	42.40
Fe II/H $\beta$	–
Fe II/[O III]	0.03

## Quality Flags

spurious_hab/hbb	1/0
15100	1
balmer	2
balmer_snr	2
hb_width	2
balmer_width	2