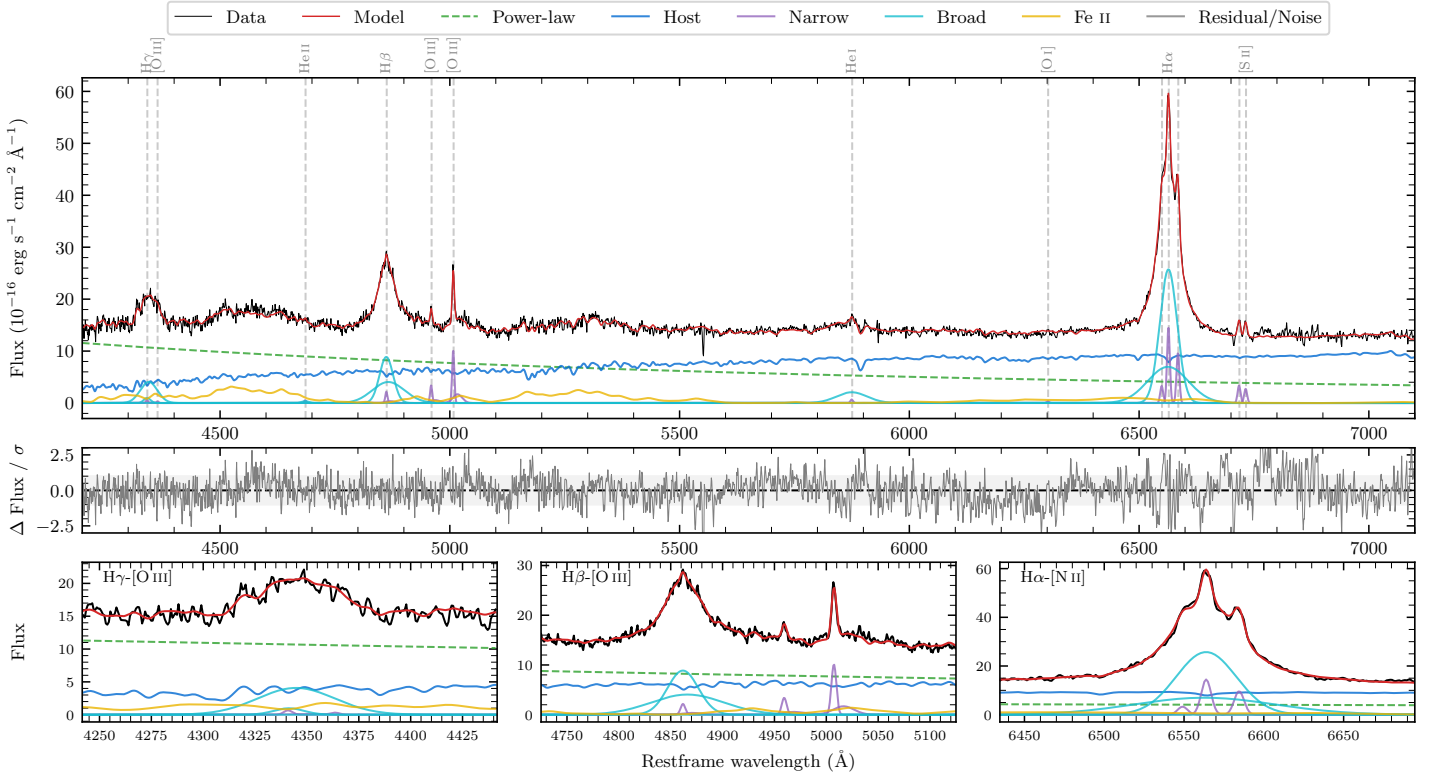
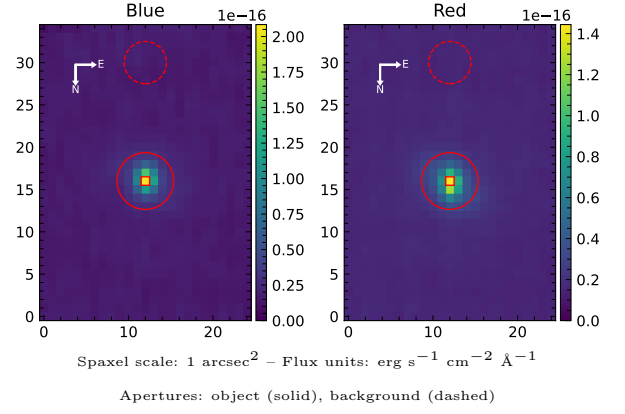


# LEDA 3939460

Spectrum ID	3643531_sp1	Spectrum type	Sy 1.0
Alt name	g2115513-104122	Quality flag	good
$z$	0.0622	AGN reference	6dFGS
RA, Dec	318.9636, -10.6895	MW $E(B-V)$	0.051
MJD	60087.76	Power law $\alpha_\nu$	$0.33 \pm 0.11$
SNR/ $\text{\AA}$ B/R	20.2/28.8	$\log L_{5100, \text{AGN}}$	$43.55 \pm 0.02$
Obs airmass	1.10	$\log H\beta_{\text{Br}}/[\text{O III}]$	$0.82 \pm 0.03$
SMSS ID	3643531	$\log M_{L5100}/M_\odot$	$7.56 \pm 0.02$
Neighbour	None $< 15''$	$\log M_{\text{H}\alpha}/M_\odot$	$7.41 \pm 0.03$
SMSS $\langle r_6 \rangle_{\text{ap}}$	$16.30 \pm 0.12$	$\log M_{\text{H}\beta}/M_\odot$	$7.60 \pm 0.03$
2MASS $K_{\text{ext}}$	$11.97 \pm 0.07$	$\log M_{[\text{O III}]} / M_\odot$	$7.36 \pm 0.04$



## Emission Line Measurements

Line	$\log L$ ( $\text{erg s}^{-1}$ )	FWHM ( $\text{km s}^{-1}$ )	$\sigma$ ( $\text{km s}^{-1}$ )	EW ( $\text{\AA}$ )
H $\gamma$ Narrow	$39.76 \pm 0.41$	$364 \pm 63$	$484 \pm 30$	$0.57 \pm 0.36$
<b>H<math>\gamma</math> Broad</b>	<b><math>41.32 \pm 0.03</math></b>	<b><math>2596 \pm 288</math></b>	<b><math>1052 \pm 34</math></b>	<b><math>20.66 \pm 0.59</math></b>
[O III] 4364	—	—	—	—
He II Narrow	$39.49 \pm 0.37$	$337 \pm 63$	$142 \pm 25$	$0.37 \pm 0.20$
<b>He II Broad</b>	<b><math>39.86 \pm 0.33</math></b>	<b><math>1179 \pm 62</math></b>	<b><math>500 \pm 25</math></b>	<b><math>0.87 \pm 0.37</math></b>
H $\beta$ Narrow	$40.33 \pm 0.13$	$364 \pm 63$	$484 \pm 30$	$2.76 \pm 0.48$
<b>H<math>\beta</math> Broad</b>	<b><math>41.83 \pm 0.01</math></b>	<b><math>2653 \pm 60</math></b>	<b><math>1264 \pm 31</math></b>	<b><math>88.72 \pm 0.90</math></b>
[O III] 5007	$41.01 \pm 0.02$	$364 \pm 63$	$484 \pm 30$	$14.25 \pm 0.48$
He I Narrow	$39.68 \pm 0.22$	$337 \pm 63$	$142 \pm 25$	$0.96 \pm 0.26$
<b>He I Broad</b>	<b><math>41.24 \pm 0.02</math></b>	<b><math>3997 \pm 63</math></b>	<b><math>1697 \pm 25</math></b>	<b><math>34.73 \pm 0.95</math></b>
[O I] 6300	$39.36 \pm 0.30$	$337 \pm 63$	$142 \pm 25$	$0.55 \pm 0.26$
H $\alpha$ Narrow	$41.05 \pm 0.02$	$337 \pm 63$	$142 \pm 25$	$29.27 \pm 0.47$
<b>H<math>\alpha</math> Broad</b>	<b><math>42.30 \pm 0.01</math></b>	<b><math>2314 \pm 64</math></b>	<b><math>1031 \pm 25</math></b>	<b><math>516.03 \pm 1.41</math></b>
[N II] 6585	$40.87 \pm 0.02$	$337 \pm 63$	$142 \pm 25$	$19.70 \pm 0.43$
[S II] 6718	$40.43 \pm 0.03$	$337 \pm 63$	$142 \pm 25$	$7.36 \pm 0.35$
[S II] 6732	$40.34 \pm 0.04$	$337 \pm 63$	$142 \pm 25$	$6.04 \pm 0.33$

## Emission Summary

H $\alpha$ broad SNR	42.18
H $\beta$ broad SNR	16.63
H $\gamma$ broad SNR	6.48
AGN frac	0.55
Host frac	0.45
$\log L_{5100, \text{Host}}$	43.46
Fe II/H $\beta$	0.94
Fe II/[O III]	6.28

## Quality Flags

spurious_hab/hbb	0/0
15100	0
balmer	0
balmer_snr	0
hb_width	0
balmer_width	0