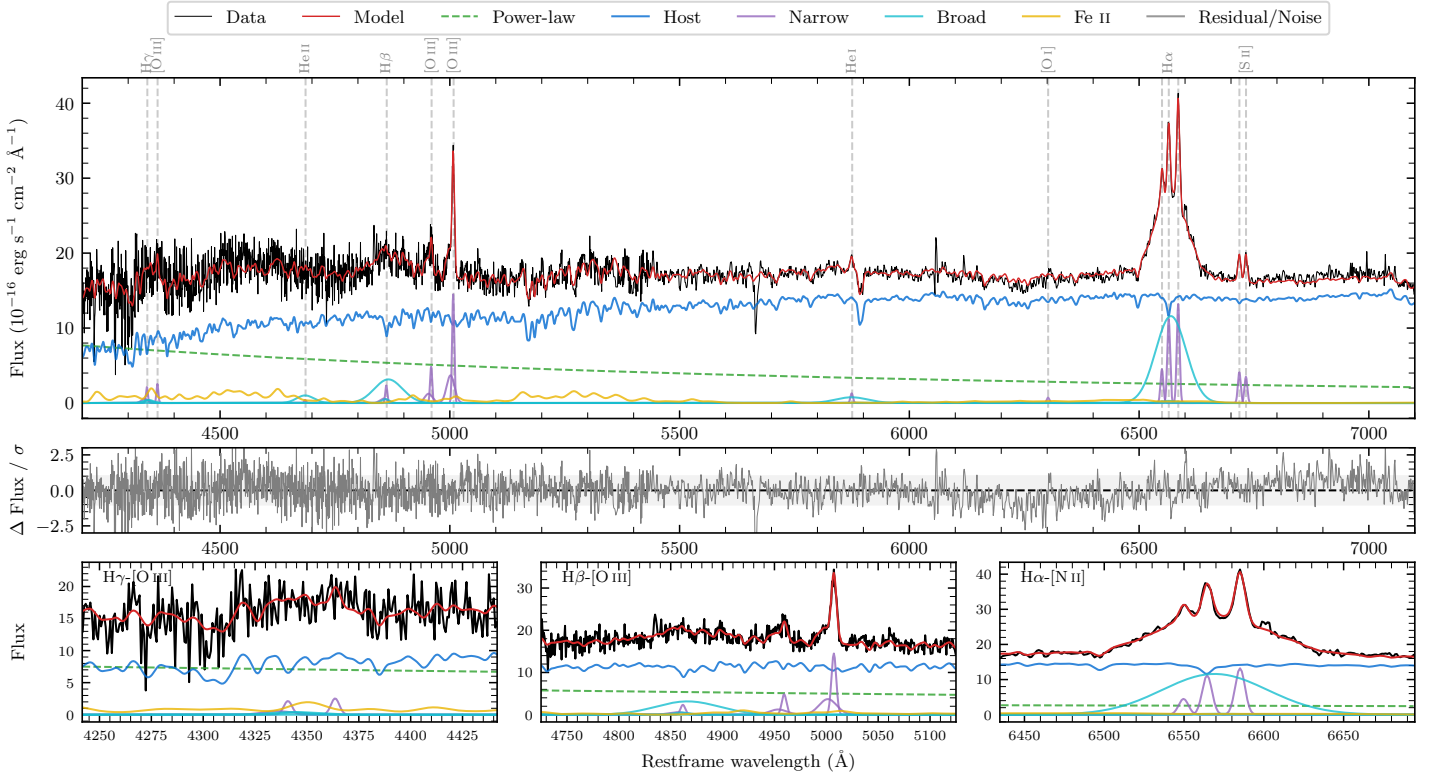
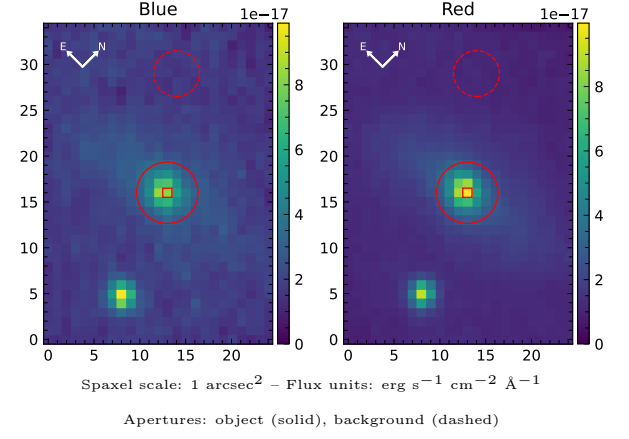


# LEDA 76235

Spectrum ID	33320416_sp1	Spectrum type	Sy 1.5
Alt name	g0654171-264838	Quality flag	good
$z$	0.0402	AGN reference	6dFGS
RA, Dec	103.5712, -26.8104	MW $E(B - V)$	0.165
MJD	60266.71	Power law $\alpha_\nu$	$0.47 \pm 0.03$
SNR/ $\text{\AA}$ B/R	12.6/23.7	$\log L_{5100, \text{AGN}}$	$42.97 \pm 0.02$
Obs airmass	1.00	$\log H\beta_{\text{Br}}/[\text{O III}]$	$0.19 \pm 0.05$
SMSS ID	33320416	$\log M_{L5100}/M_\odot$	$7.65 \pm 0.09$
Neighbour	12.3", 33320415	$\log M_{\text{H}\alpha}/M_\odot$	$7.35 \pm 0.03$
SMSS $\langle r_6''_{\text{ap}} \rangle$	$16.04 \pm 0.16$	$\log M_{\text{H}\beta}/M_\odot$	$7.58 \pm 0.10$
2MASS $K_{\text{ext}}$	$11.32 \pm 0.07$	$\log M_{[\text{O III}]} / M_\odot$	$7.61 \pm 0.10$



## Emission Line Measurements

Line	$\log L$ ( $\text{erg s}^{-1}$ )	FWHM ( $\text{km s}^{-1}$ )	$\sigma$ ( $\text{km s}^{-1}$ )	EW ( $\text{\AA}$ )
H $\gamma$ Narrow	$39.92 \pm 0.23$	$376 \pm 63$	$407 \pm 31$	$3.05 \pm 1.08$
<b>H<math>\gamma</math> Broad</b>	—	—	—	—
[O III] 4364	$39.71 \pm 0.21$	$328 \pm 63$	$139 \pm 25$	$1.92 \pm 0.59$
He II Narrow	—	—	—	—
<b>He II Broad</b>	<b><math>40.28 \pm 0.15</math></b>	<b><math>2827 \pm 64</math></b>	<b><math>1201 \pm 26</math></b>	<b><math>8.47 \pm 1.72</math></b>
H $\beta$ Narrow	$40.01 \pm 0.18$	$376 \pm 63$	$407 \pm 31$	$4.97 \pm 1.03$
<b>H<math>\beta</math> Broad</b>	<b><math>41.01 \pm 0.04</math></b>	<b><math>3939 \pm 411</math></b>	<b><math>1579 \pm 38</math></b>	<b><math>48.83 \pm 2.14</math></b>
[O III] 5007	$40.81 \pm 0.03$	$376 \pm 63$	$407 \pm 31$	$33.89 \pm 1.16$
He I Narrow	$39.55 \pm 0.18$	$328 \pm 63$	$139 \pm 25$	$2.74 \pm 0.59$
<b>He I Broad</b>	<b><math>40.42 \pm 0.08</math></b>	<b><math>4198 \pm 64</math></b>	<b><math>1783 \pm 26</math></b>	<b><math>20.82 \pm 2.12</math></b>
[O I] 6300	$39.32 \pm 0.25$	$328 \pm 63$	$139 \pm 25$	$1.94 \pm 0.75$
H $\alpha$ Narrow	$40.53 \pm 0.02$	$328 \pm 63$	$139 \pm 25$	$34.72 \pm 0.94$
<b>H<math>\alpha</math> Broad</b>	<b><math>41.59 \pm 0.01</math></b>	<b><math>3529 \pm 75</math></b>	<b><math>1313 \pm 25</math></b>	<b><math>398.66 \pm 2.82</math></b>
[N II] 6585	$40.60 \pm 0.02$	$328 \pm 63$	$139 \pm 25$	$41.42 \pm 0.96$
[S II] 6718	$40.10 \pm 0.04$	$328 \pm 63$	$139 \pm 25$	$13.81 \pm 0.83$
[S II] 6732	$40.04 \pm 0.05$	$328 \pm 63$	$139 \pm 25$	$11.87 \pm 0.81$

## Emission Summary

H $\alpha$ broad SNR	8.52
H $\beta$ broad SNR	2.66
H $\gamma$ broad SNR	0.71
AGN frac	0.30
Host frac	0.70
$\log L_{5100, \text{Host}}$	43.33
Fe II/H $\beta$	1.47
Fe II/[O III]	2.26

## Quality Flags

spurious_hab/hbb	0/0
15100	2
balmer	1
balmer_snr	2
hb_width	0
balmer_width	0