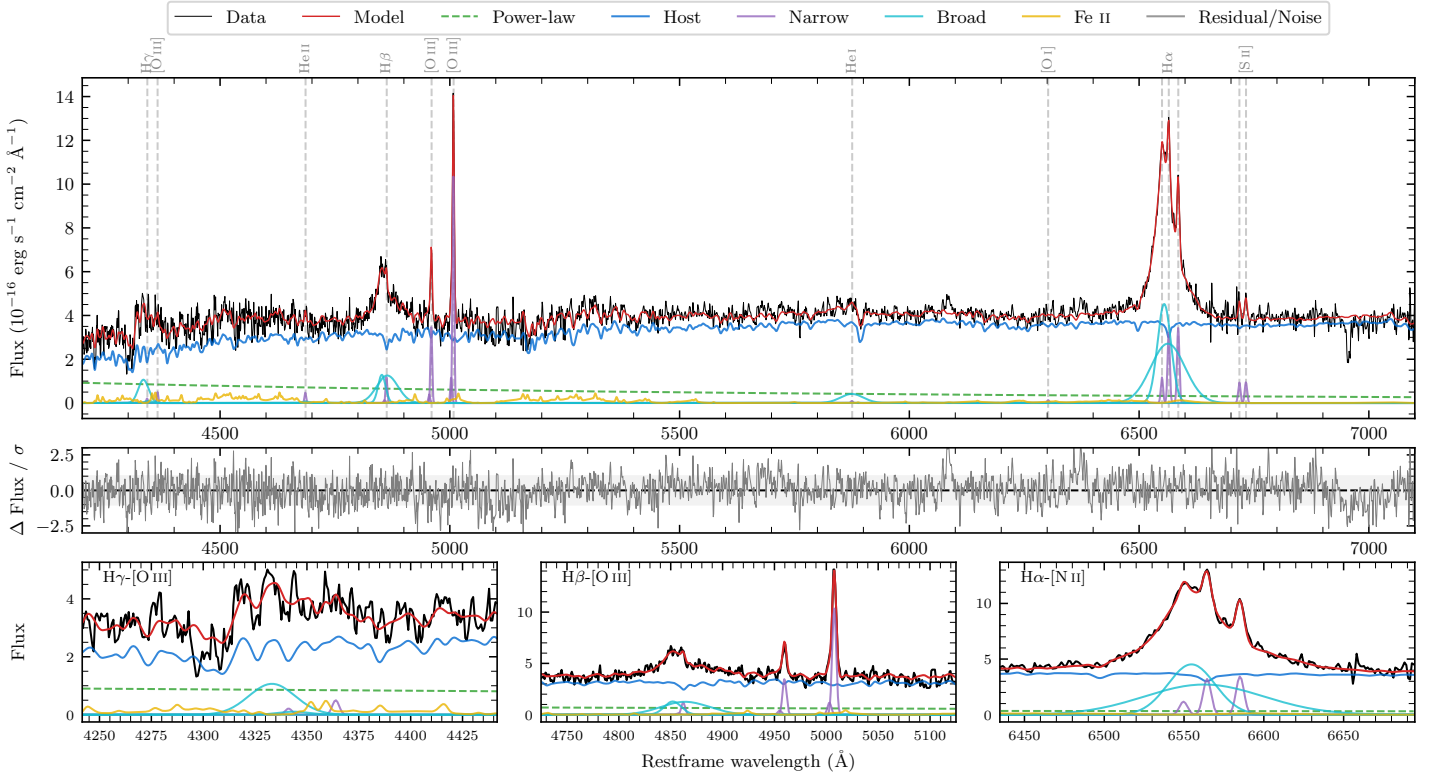
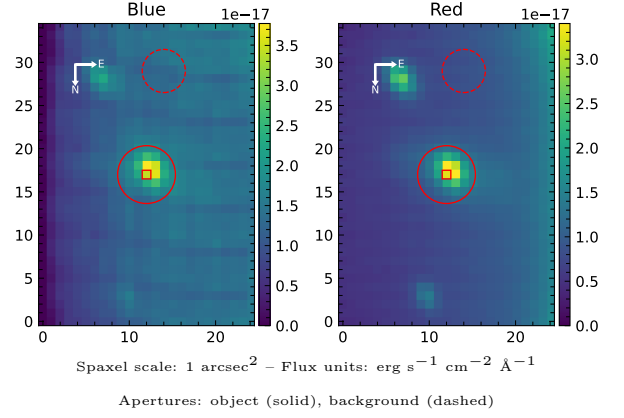


LEDA 680725

Spectrum ID	32348507_sp1	Spectrum type	Sy 1.5
Alt name	g0643001-330715	Quality flag	good
z	0.0932	AGN reference	6dFGS
RA, Dec	100.7504, -33.1207	MW $E(B - V)$	0.084
MJD	60352.49	Power law α_ν	0.36 ± 0.15
SNR/Å B/R	10.7/14.3	$\log L_{5100, \text{AGN}}$	42.81 ± 0.06
Obs airmass	1.01	$\log H\beta_{\text{Br}}/[\text{O III}]$	0.26 ± 0.02
SMSS ID	32348507	$\log M_{L5100}/M_\odot$	7.01 ± 0.10
Neighbour	11.9", 32348506	$\log M_{\text{H}\alpha}/M_\odot$	7.15 ± 0.03
SMSS $\langle r_6^{\text{ap}} \rangle$	17.18 ± 0.08	$\log M_{\text{H}\beta}/M_\odot$	7.17 ± 0.10
2MASS K_{ext}	12.65 ± 0.15	$\log M_{[\text{O III}]} / M_\odot$	7.19 ± 0.10



Emission Line Measurements

Line	$\log L$ (erg s ⁻¹)	FWHM (km s ⁻¹)	σ (km s ⁻¹)	EW (Å)
H γ Narrow	39.37 ± 0.44	282 ± 63	142 ± 26	1.26 ± 1.17
Hγ Broad	40.89 ± 0.05	1886 ± 87	633 ± 25	40.45 ± 5.55
[O III] 4364	39.70 ± 0.24	272 ± 63	115 ± 25	2.70 ± 0.95
He II Narrow	39.71 ± 0.23	272 ± 63	115 ± 25	3.27 ± 1.03
He II Broad	—	—	—	—
H β Narrow	40.17 ± 0.10	282 ± 63	142 ± 26	10.33 ± 1.32
Hβ Broad	41.38 ± 0.02	2029 ± 212	1065 ± 32	165.92 ± 4.49
[O III] 5007	41.12 ± 0.01	282 ± 63	142 ± 26	99.38 ± 1.59
He I Narrow	—	—	—	—
He I Broad	40.79 ± 0.06	2968 ± 80	1260 ± 33	67.39 ± 5.53
[O I] 6300	39.29 ± 0.41	272 ± 63	115 ± 25	2.53 ± 1.99
H α Narrow	40.68 ± 0.04	272 ± 63	115 ± 25	68.70 ± 2.91
Hα Broad	42.00 ± 0.01	2098 ± 73	1077 ± 25	1429.35 ± 10.36
[N II] 6585	40.71 ± 0.03	272 ± 63	115 ± 25	74.31 ± 3.08
[S II] 6718	40.16 ± 0.08	272 ± 63	115 ± 25	21.70 ± 2.74
[S II] 6732	40.16 ± 0.09	272 ± 63	115 ± 25	22.12 ± 2.71

Emission Summary

H α broad SNR	18.66
H β broad SNR	6.25
H γ broad SNR	2.94
AGN frac	0.16
Host frac	0.84
$\log L_{5100, \text{Host}}$	43.52
Fe II/H β	0.67
Fe II/[O III]	1.20

Quality Flags

spurious_hab/hbb	0/0
15100	2
balmer	0
balmer_snr	1
hb_width	1
balmer_width	1