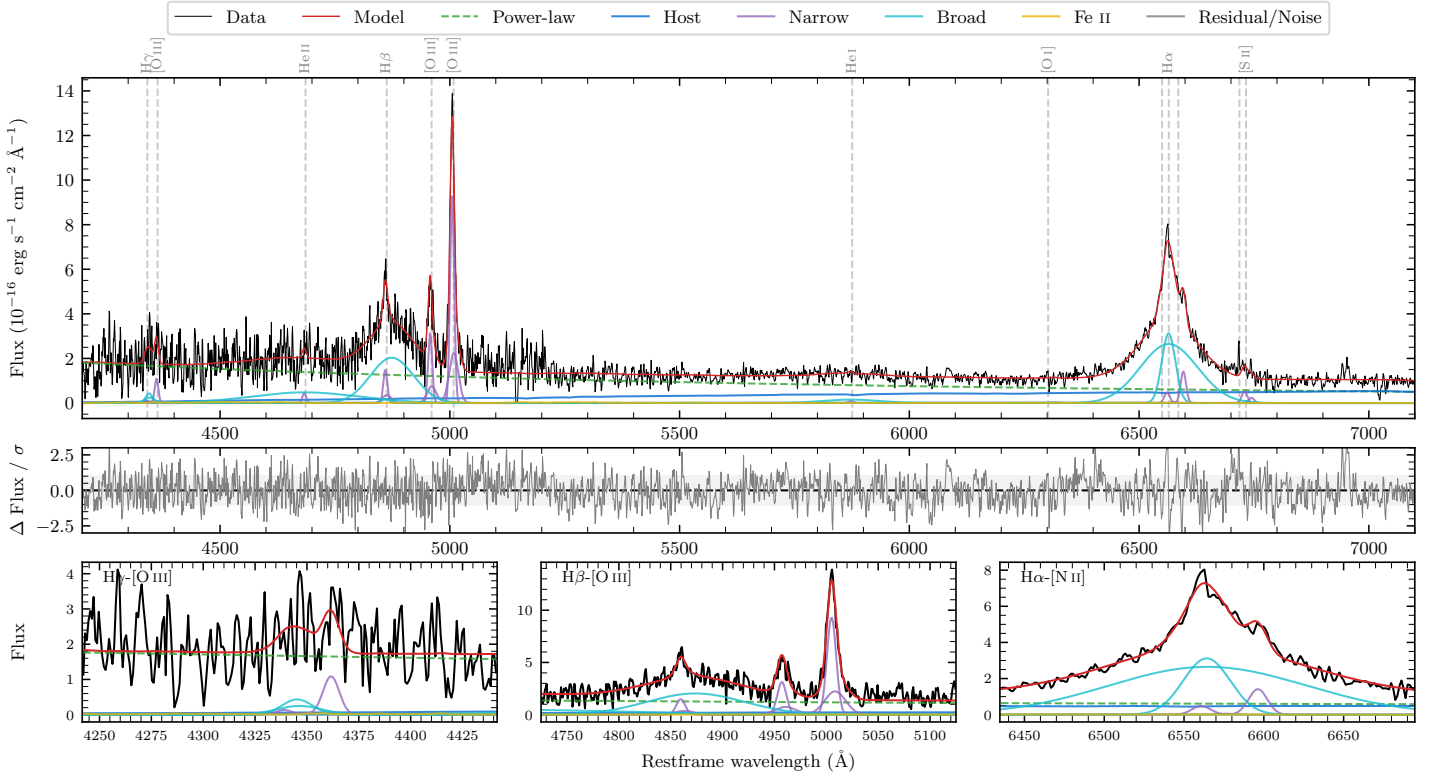
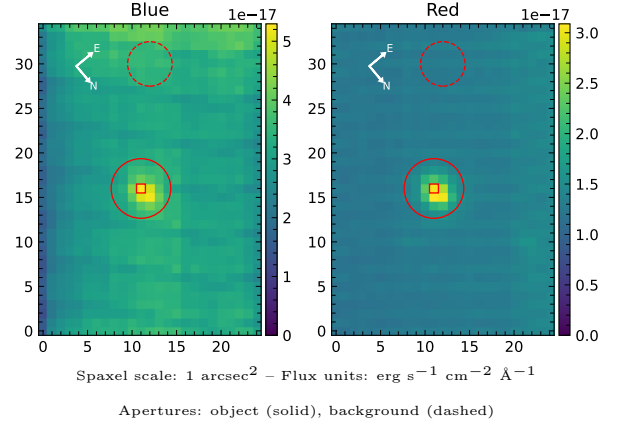


# 2MASS J12125006–4910377

Spectrum ID	322236535_sp1	Spectrum type	Bad
Alt name	g1212501–491038	Quality flag	bad_all
$z$	0.0833	AGN reference	6dFGS
RA, Dec	183.2086, –49.1771	MW $E(B - V)$	0.122
MJD	60403.6	Power law $\alpha_\nu$	$0.44 \pm 0.06$
SNR/ $\text{\AA}$ B/R	3.6/5.4	$\log L_{5100, \text{AGN}}$	$42.99 \pm 0.02$
Obs airmass	1.07	$\log H\beta_{\text{Br}}/[\text{O III}]$	$0.18 \pm 0.03$
SMSS ID	322236535	$\log M_{L5100}/M_\odot$	$8.10 \pm 0.04$
Neighbour	11.2", 322236532	$\log M_{\text{H}\alpha}/M_\odot$	$7.32 \pm 0.03$
SMSS $\langle r_6'' \text{ap} \rangle$	$16.07 \pm 0.11$	$\log M_{\text{H}\beta}/M_\odot$	$8.31 \pm 0.04$
2MASS $K_{\text{ext}}$	$12.15 \pm 0.08$	$\log M_{[\text{O III}]} / M_\odot$	$8.37 \pm 0.04$



## Emission Line Measurements

Line	$\log L$ (erg s $^{-1}$ )	FWHM (km s $^{-1}$ )	$\sigma$ (km s $^{-1}$ )	EW (Å)
H $\gamma$ Narrow	–	–	–	–
<b>H<math>\gamma</math> Broad</b>	<b><math>40.50 \pm 0.15</math></b>	<b><math>1353 \pm 167</math></b>	<b><math>511 \pm 74</math></b>	<b><math>9.58 \pm 2.25</math></b>
[O III] 4364	$40.30 \pm 0.14$	$631 \pm 62$	$267 \pm 25$	$6.96 \pm 1.36$
He II Narrow	$39.94 \pm 0.26$	$631 \pm 62$	$267 \pm 25$	$3.63 \pm 1.45$
<b>He II Broad</b>	<b><math>41.42 \pm 0.07</math></b>	<b><math>17661 \pm 62</math></b>	<b><math>7500 \pm 25</math></b>	<b><math>110.39 \pm 8.79</math></b>
H $\beta$ Narrow	$40.67 \pm 0.09$	$708 \pm 64$	$426 \pm 29$	$21.28 \pm 2.33$
<b>H<math>\beta</math> Broad</b>	<b><math>41.66 \pm 0.02</math></b>	<b><math>6516 \pm 271</math></b>	<b><math>2485 \pm 27</math></b>	<b><math>209.61 \pm 5.58</math></b>
[O III] 5007	$41.48 \pm 0.01$	$708 \pm 64$	$426 \pm 29$	$147.35 \pm 2.71$
He I Narrow	$39.35 \pm 0.44$	$631 \pm 62$	$267 \pm 25$	$1.62 \pm 1.09$
<b>He I Broad</b>	<b><math>40.64 \pm 0.11</math></b>	<b><math>7265 \pm 62</math></b>	<b><math>3085 \pm 25</math></b>	<b><math>31.96 \pm 3.67</math></b>
[O I] 6300	–	–	–	–
H $\alpha$ Narrow	$39.18 \pm 0.52$	$631 \pm 62$	$267 \pm 25$	$1.46 \pm 1.41$
<b>H<math>\alpha</math> Broad</b>	<b><math>41.99 \pm 0.01</math></b>	<b><math>2572 \pm 78</math></b>	<b><math>2002 \pm 25</math></b>	<b><math>938.94 \pm 5.44</math></b>
[N II] 6585	$40.59 \pm 0.03$	$631 \pm 62$	$267 \pm 25$	$37.56 \pm 1.53$
[S II] 6718	$40.16 \pm 0.09$	$631 \pm 62$	$267 \pm 25$	$14.78 \pm 1.99$
[S II] 6732	$39.83 \pm 0.20$	$631 \pm 62$	$267 \pm 25$	$6.91 \pm 1.92$

## Emission Summary

H $\alpha$ broad SNR	11.74
H $\beta$ broad SNR	4.44
H $\gamma$ broad SNR	1.62
AGN frac	0.83
Host frac	0.17
$\log L_{5100, \text{Host}}$	42.30
Fe II/H $\beta$	–
Fe II/[O III]	–

## Quality Flags

spurious_hab/hbb	0/0
15100	2
balmer	0
balmer_snr	1
hb_width	0
balmer_width	1