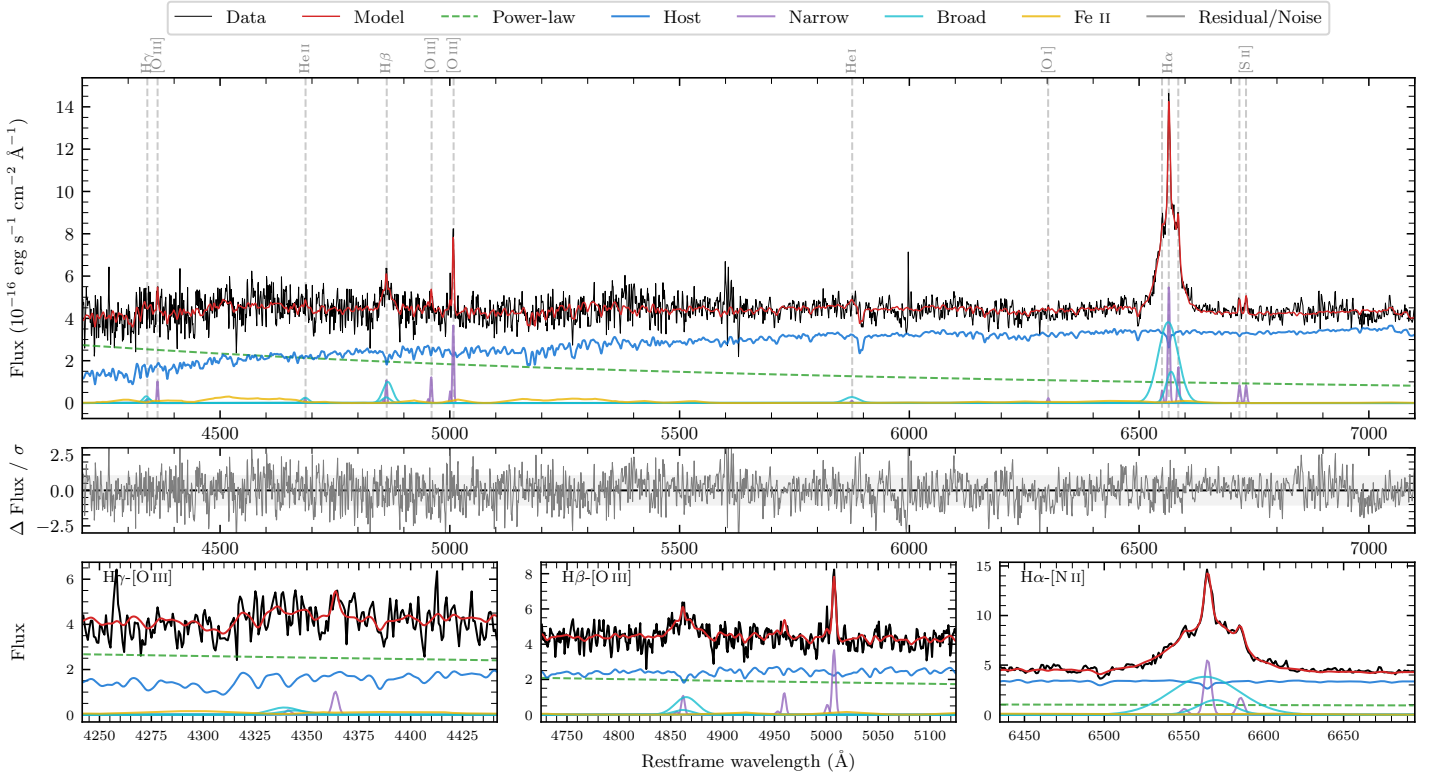
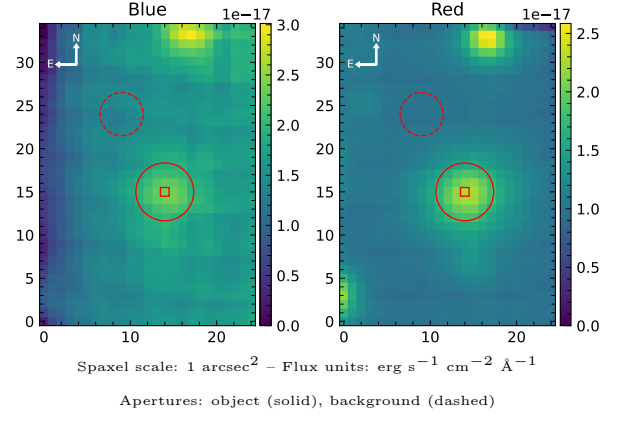


6dFGS gJ130032.5–485006

Spectrum ID	321515119_sp1	Spectrum type	Sy 1.5
Alt name	g1300325–485006	Quality flag	good
z	0.0506	AGN reference	6dFGS
RA, Dec	195.1351, –48.8351	MW $E(B - V)$	0.163
MJD	60056.6	Power law α_ν	0.30 ± 0.17
SNR/Å B/R	9.6/13.4	$\log L_{5100, \text{AGN}}$	42.74 ± 0.04
Obs airmass	1.09	$\log H\beta_{\text{Br}}/[\text{O III}]$	0.29 ± 0.07
SMSS ID	321515119	$\log M_{L5100}/M_\odot$	6.72 ± 0.04
Neighbour	7.4", 321515122	$\log M_{\text{H}\alpha}/M_\odot$	6.60 ± 0.05
SMSS $\langle r_6''_{\text{ap}} \rangle$	17.00 ± 0.14	$\log M_{\text{H}\beta}/M_\odot$	6.44 ± 0.07
2MASS K_{ext}	12.51 ± 0.12	$\log M_{[\text{O III}]} / M_\odot$	6.40 ± 0.08



Emission Line Measurements

Line	$\log L$ (erg s ⁻¹)	FWHM (km s ⁻¹)	σ (km s ⁻¹)	EW (Å)
H γ Narrow	–	–	–	–
Hγ Broad	39.83 ± 0.18	1222 ± 67	463 ± 25	3.77 ± 0.99
[O III] 4364	39.37 ± 0.18	234 ± 63	98 ± 25	1.54 ± 0.40
He II Narrow	38.75 ± 0.47	234 ± 63	98 ± 25	0.44 ± 0.40
He II Broad	39.51 ± 0.28	1206 ± 63	512 ± 25	2.47 ± 0.94
H β Narrow	39.50 ± 0.18	234 ± 63	164 ± 32	2.67 ± 0.52
Hβ Broad	40.34 ± 0.06	1507 ± 51	555 ± 25	17.63 ± 1.14
[O III] 5007	40.05 ± 0.05	234 ± 63	164 ± 32	10.00 ± 0.52
He I Narrow	–	–	–	–
He I Broad	39.85 ± 0.14	1893 ± 63	804 ± 25	9.19 ± 1.72
[O I] 6300	38.90 ± 0.33	234 ± 63	98 ± 25	1.22 ± 0.64
H α Narrow	40.28 ± 0.03	234 ± 63	98 ± 25	32.09 ± 0.96
Hα Broad	41.20 ± 0.01	1963 ± 89	769 ± 25	264.68 ± 2.74
[N II] 6585	39.77 ± 0.06	234 ± 63	98 ± 25	10.02 ± 0.86
[S II] 6718	39.47 ± 0.11	234 ± 63	98 ± 25	5.27 ± 0.82
[S II] 6732	39.46 ± 0.12	234 ± 63	98 ± 25	5.15 ± 0.79

Emission Summary

H α broad SNR	10.75
H β broad SNR	2.71
H γ broad SNR	1.17
AGN frac	0.43
Host frac	0.57
$\log L_{5100, \text{Host}}$	42.86
Fe II/H β	1.69
Fe II/[O III]	3.18

Quality Flags

spurious_hab/hbb	0/0
15100	1
balmer	1
balmer_snr	1
hb_width	0
balmer_width	2