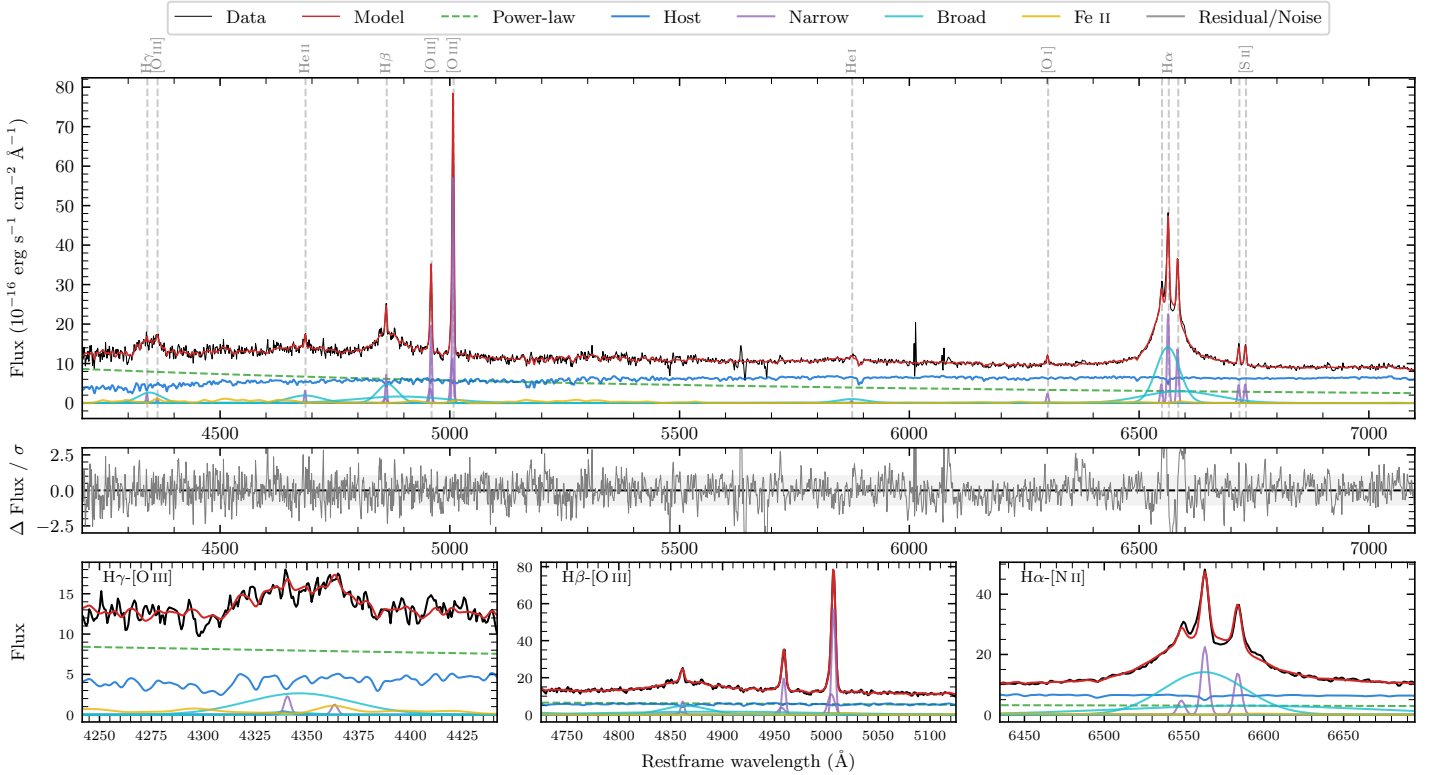
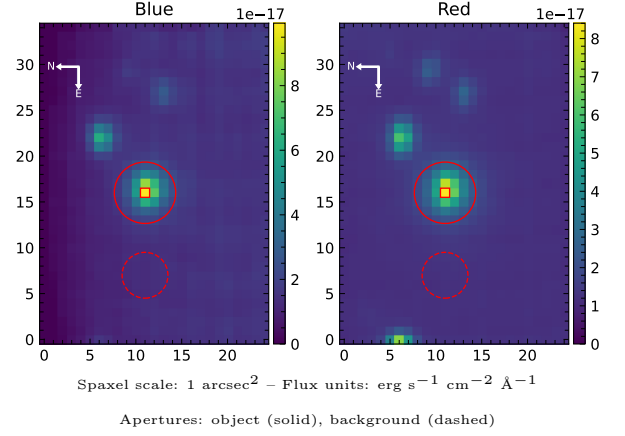


2MASS J13283109–4909060

Spectrum ID	320346080_sp1	Spectrum type	Sy 1.5
Alt name	g1328311–490906	Quality flag	good
z	0.0476	AGN reference	6dFGS
RA, Dec	202.1295, –49.1517	MW $E(B - V)$	0.129
MJD	60058.44	Power law α_ν	0.35 ± 0.11
SNR/ \AA B/R	16.9/20.7	$\log L_{5100, \text{AGN}}$	43.18 ± 0.02
Obs airmass	1.25	$\log H\beta_{\text{Br}}/[\text{O III}]$	0.29 ± 0.01
SMSS ID	320346080	$\log M_{L5100}/M_\odot$	7.74 ± 0.03
Neighbour	6.9", 320346078	$\log M_{\text{H}\alpha}/M_\odot$	7.45 ± 0.02
SMSS $\langle r_6''_{\text{ap}} \rangle$	16.41 ± 0.07	$\log M_{\text{H}\beta}/M_\odot$	7.84 ± 0.04
2MASS K_{ext}	12.57 ± 0.10	$\log M_{[\text{O III}]} / M_\odot$	7.85 ± 0.03



Emission Line Measurements

Line	$\log L$ (erg s^{-1})	FWHM (km s^{-1})	σ (km s^{-1})	EW (\AA)
H γ Narrow	39.83 ± 0.12	274 ± 63	146 ± 25	1.56 ± 0.31
Hγ Broad	41.01 ± 0.03	3915 ± 270	1487 ± 70	23.36 ± 0.94
[O III] 4364	39.44 ± 0.22	250 ± 63	105 ± 25	0.64 ± 0.21
He II Narrow	39.86 ± 0.08	250 ± 63	105 ± 25	2.00 ± 0.22
He II Broad	41.00 ± 0.03	5558 ± 208	2360 ± 88	27.76 ± 1.27
H β Narrow	40.37 ± 0.03	274 ± 63	146 ± 25	7.06 ± 0.33
Hβ Broad	41.58 ± 0.01	3954 ± 124	3335 ± 87	116.44 ± 2.01
[O III] 5007	41.29 ± 0.01	274 ± 63	146 ± 25	63.80 ± 0.37
He I Narrow	39.19 ± 0.25	250 ± 63	105 ± 25	0.73 ± 0.27
He I Broad	40.67 ± 0.04	3928 ± 178	1668 ± 75	21.98 ± 1.25
[O I] 6300	39.87 ± 0.05	250 ± 63	105 ± 25	4.16 ± 0.34
H α Narrow	40.87 ± 0.01	250 ± 63	105 ± 25	44.95 ± 0.57
Hα Broad	41.93 ± 0.01	3116 ± 68	1633 ± 31	524.23 ± 2.44
[N II] 6585	40.66 ± 0.01	250 ± 63	105 ± 25	27.92 ± 0.50
[S II] 6718	40.19 ± 0.03	250 ± 63	105 ± 25	10.01 ± 0.41
[S II] 6732	40.20 ± 0.03	250 ± 63	105 ± 25	10.26 ± 0.41

Emission Summary

H α broad SNR	22.32
H β broad SNR	8.37
H γ broad SNR	3.92
AGN frac	0.51
Host frac	0.49
$\log L_{5100, \text{Host}}$	43.16
Fe II/H β	0.30
Fe II/[O III]	0.57

Quality Flags

spurious_hab/hbb	0/0
15100	2
balmer	0
balmer_snr	0
hb_width	2
balmer_width	0