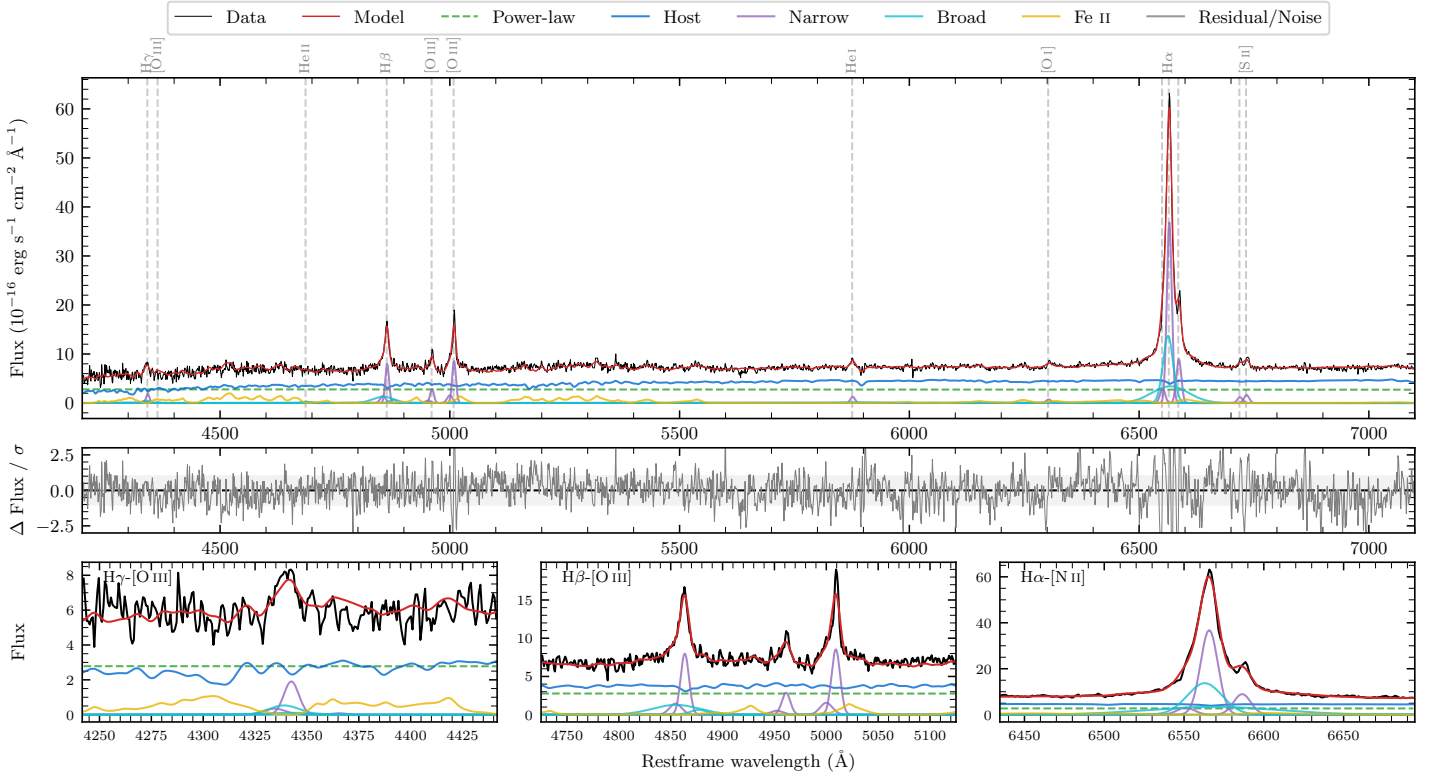
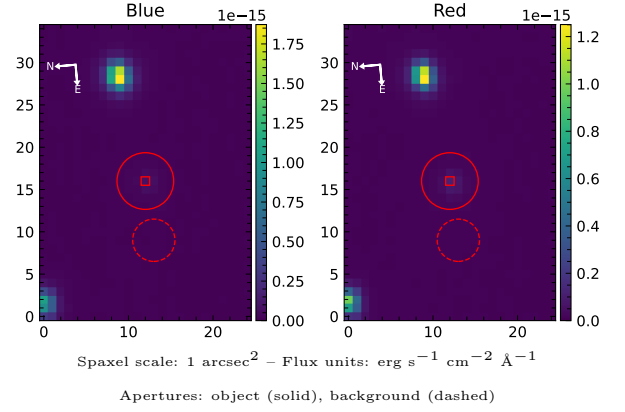


LEDA 3708127

Spectrum ID	31908506_sp1	Spectrum type	Sy 1.5
Alt name	g0611195-323421	Quality flag	good
z	0.0493	AGN reference	6dFGS
RA, Dec	92.8313, -32.5724	MW $E(B-V)$	0.048
MJD	60288.61	Power law α_ν	-1.95 ± 0.04
SNR/ \AA B/R	10.4/22.0	$\log L_{5100, \text{AGN}}$	42.90 ± 0.02
Obs airmass	1.01	$\log H\beta_{\text{Br}}/[\text{O III}]$	-0.11 ± 0.06
SMSS ID	31908506	$\log M_{L5100}/M_\odot$	7.50 ± 0.05
Neighbour	12.5", 31908505	$\log M_{H\alpha}/M_\odot$	6.55 ± 0.04
SMSS $\langle r_6'' \text{ap} \rangle$	16.47 ± 0.05	$\log M_{H\beta}/M_\odot$	7.32 ± 0.07
2MASS K_{ext}	12.12 ± 0.08	$\log M_{[\text{O III}]} / M_\odot$	7.49 ± 0.06



Emission Line Measurements

Line	$\log L$ (erg s^{-1})	FWHM (km s^{-1})	σ (km s^{-1})	EW (\AA)
H γ Narrow	40.11 ± 0.16	633 ± 64	354 ± 27	8.17 ± 1.12
Hγ Broad	39.98 ± 0.28	1268 ± 114	489 ± 70	4.88 ± 1.57
[O III] 4364	—	—	—	—
He II Narrow	39.19 ± 0.45	584 ± 63	247 ± 25	0.98 ± 0.74
He II Broad	39.62 ± 0.35	1570 ± 65	666 ± 26	2.63 ± 1.22
H β Narrow	40.78 ± 0.02	633 ± 64	354 ± 27	38.51 ± 0.90
Hβ Broad	40.71 ± 0.05	3406 ± 179	1221 ± 25	32.69 ± 1.71
[O III] 5007	40.82 ± 0.02	633 ± 64	354 ± 27	42.48 ± 0.88
He I Narrow	39.97 ± 0.06	584 ± 63	247 ± 25	5.92 ± 0.51
He I Broad	39.89 ± 0.22	4024 ± 63	1709 ± 25	4.92 ± 1.21
[O I] 6300	39.76 ± 0.08	584 ± 63	247 ± 25	3.72 ± 0.44
H α Narrow	41.48 ± 0.01	584 ± 63	247 ± 25	192.41 ± 0.75
Hα Broad	41.63 ± 0.01	1370 ± 64	838 ± 25	276.68 ± 1.40
[N II] 6585	40.86 ± 0.01	584 ± 63	247 ± 25	46.96 ± 0.67
[S II] 6718	39.99 ± 0.05	584 ± 63	247 ± 25	6.32 ± 0.45
[S II] 6732	40.14 ± 0.04	584 ± 63	247 ± 25	8.88 ± 0.45

Emission Summary

H α broad SNR	24.96
H β broad SNR	2.25
H γ broad SNR	1.10
AGN frac	0.42
Host frac	0.58
$\log L_{5100, \text{Host}}$	43.04
Fe II/H β	3.21
Fe II/[O III]	2.47

Quality Flags

spurious_hab/hbb	0/0
15100	1
balmer	1
balmer_snr	1
hb_width	0
balmer_width	1