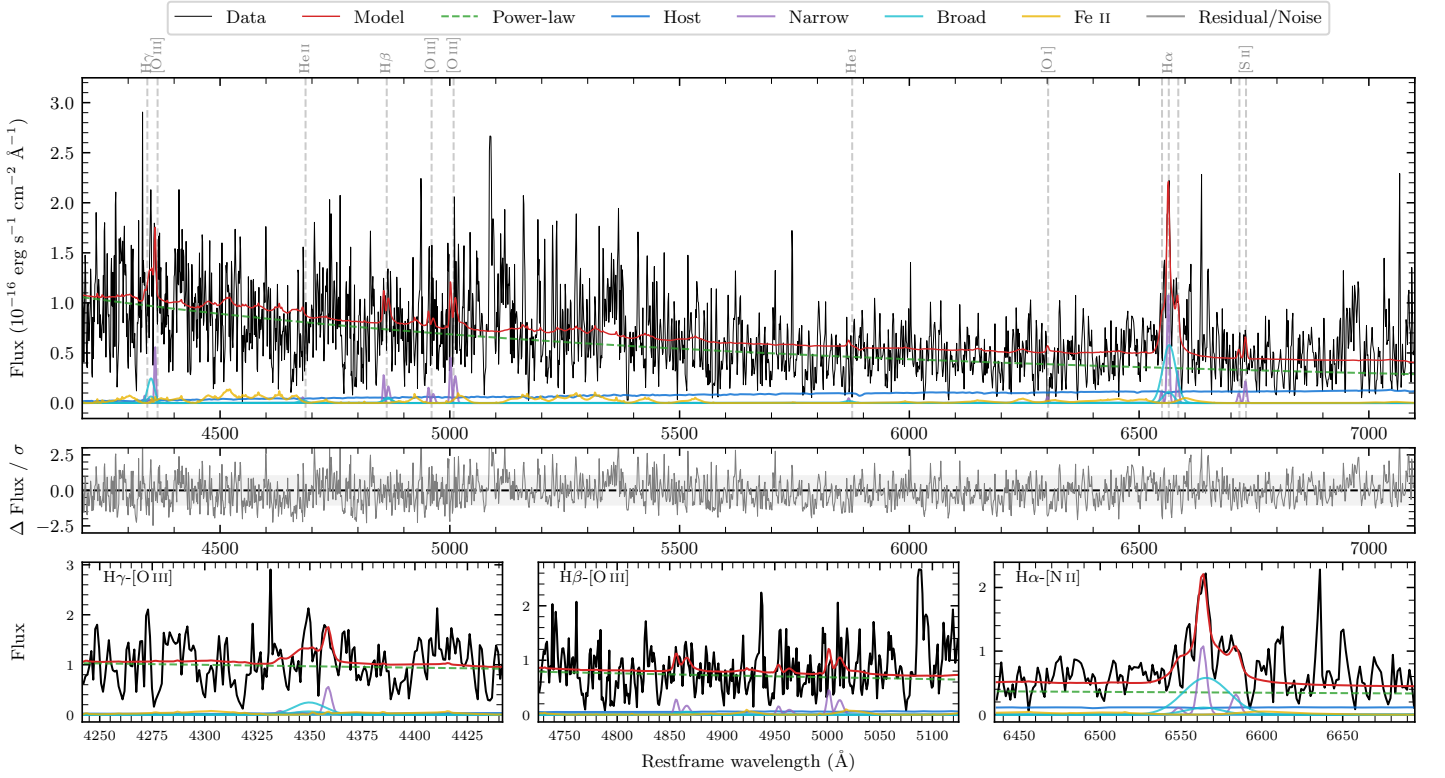
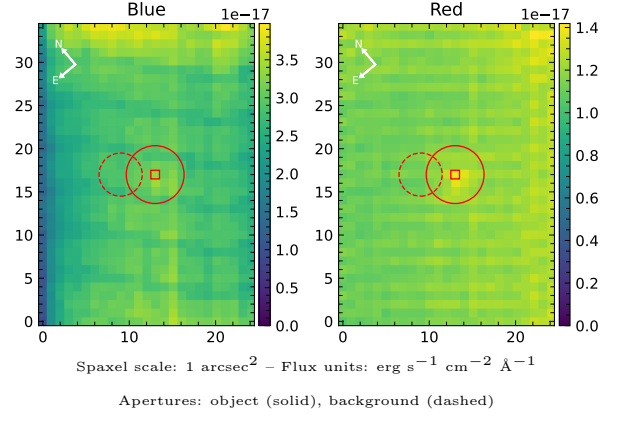


2MASS J12570643–4435201

Spectrum ID	319052134_sp1	Spectrum type	Bad
Alt name	g1257064–443520	Quality flag	bad_all
z	0.0965	AGN reference	6dFGS
RA, Dec	194.2768, –44.5889	MW $E(B - V)$	0.075
MJD	60403.59	Power law α_ν	0.47 ± 0.02
SNR/Å B/R	1.9/1.4	$\log L_{5100, \text{AGN}}$	42.90 ± 0.01
Obs airmass	1.03	$\log H\beta_{\text{Br}}/[\text{O III}]$	–
SMSS ID	319052134	$\log M_{L5100}/M_\odot$	–
Neighbour	None $< 15''$	$\log M_{\text{H}\alpha}/M_\odot$	6.10 ± 0.08
SMSS $\langle r_6''_{\text{ap}} \rangle$	15.95 ± 0.03	$\log M_{\text{H}\beta}/M_\odot$	–
2MASS K_{ext}	12.29 ± 0.07	$\log M_{[\text{O III}]} / M_\odot$	–



Emission Line Measurements

Line	$\log L$ (erg s $^{-1}$)	FWHM (km s $^{-1}$)	σ (km s $^{-1}$)	EW (Å)
H γ Narrow	–	–	–	–
Hγ Broad	–	–	–	–
[O III] 4364	39.80 ± 0.20	280 ± 62	118 ± 25	2.75 ± 0.82
He II Narrow	–	–	–	–
He II Broad	–	–	–	–
H β Narrow	39.82 ± 0.35	–	344 ± 25	3.95 ± 1.40
Hβ Broad	–	–	–	–
[O III] 5007	40.06 ± 0.19	–	344 ± 25	7.11 ± 1.70
He I Narrow	–	–	–	–
He I Broad	–	–	–	–
[O I] 6300	–	–	–	–
H α Narrow	40.26 ± 0.11	280 ± 62	118 ± 25	22.28 ± 2.69
Hα Broad	40.79 ± 0.08	1461 ± 78	537 ± 25	74.03 ± 6.29
[N II] 6585	39.73 ± 0.26	280 ± 62	118 ± 25	6.55 ± 2.29
[S II] 6718	–	–	–	–
[S II] 6732	39.57 ± 0.33	280 ± 62	118 ± 25	4.84 ± 2.87

Emission Summary

H α broad SNR	1.92
H β broad SNR	0.38
H γ broad SNR	0.00
AGN frac	0.92
Host frac	0.08
$\log L_{5100, \text{Host}}$	41.81
Fe II/H β	–
Fe II/[O III]	3.99

Quality Flags

spurious_hab/hbb	0/0
15100	2
balmer	2
balmer_snr	2
hb_width	2
balmer_width	2