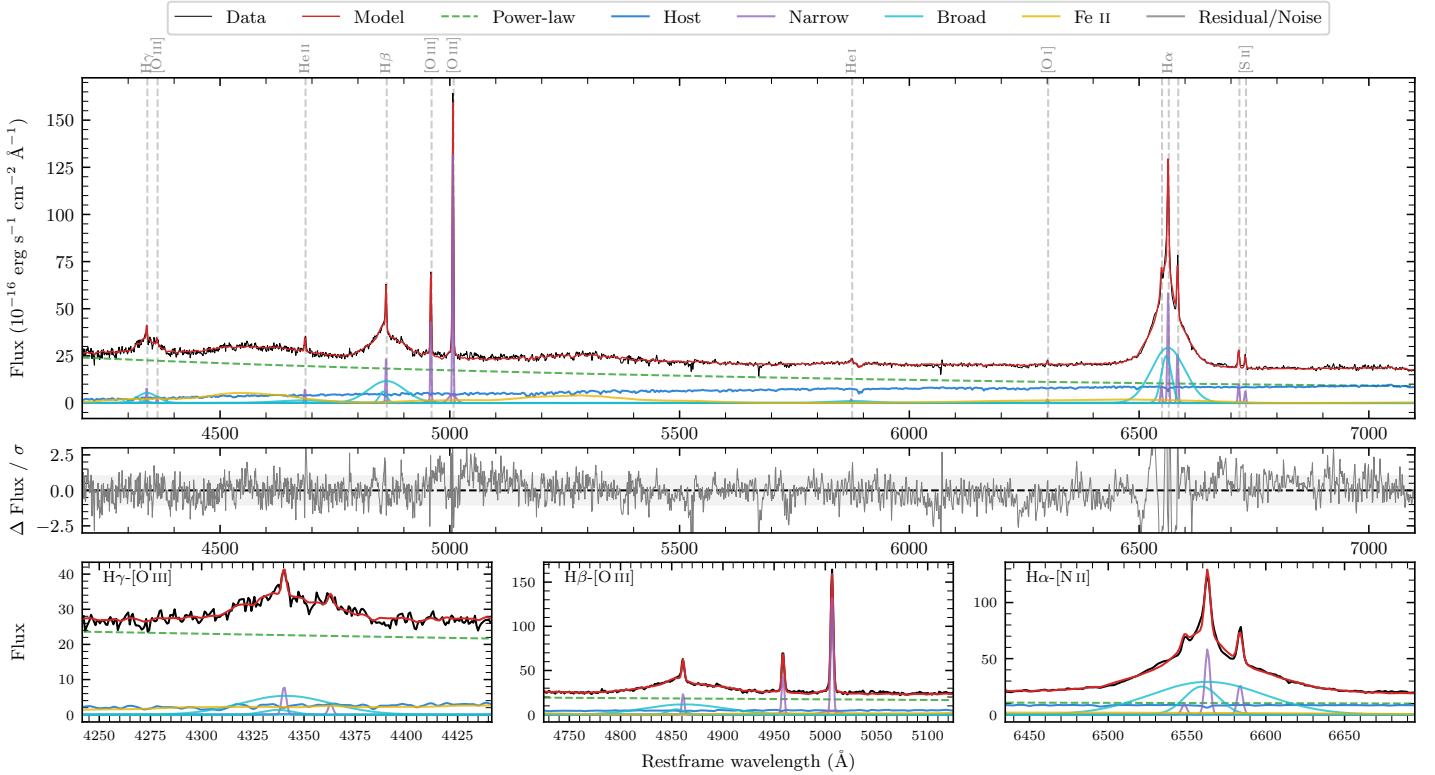
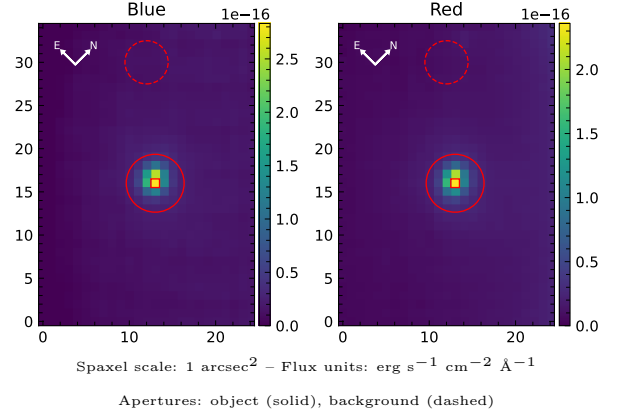


LEDA 4076282

Spectrum ID	318670924_sp1	Spectrum type	Sy 1.2
Alt name	g1353296-434143	Quality flag	good
z	0.0379	AGN reference	6dFGS
RA, Dec	208.3735, -43.6954	MW $E(B - V)$	0.083
MJD	60353.75	Power law α_ν	-0.11 ± 0.10
SNR/ \AA B/R	21.9/26.7	$\log L_{5100, \text{AGN}}$	43.46 ± 0.01
Obs airmass	1.03	$\log H\beta_{\text{Br}}/[\text{O III}]$	0.40 ± 0.01
SMSS ID	318670924	$\log M_{L5100}/M_\odot$	7.82 ± 0.05
Neighbour	14.4", 318670897	$\log M_{\text{H}\alpha}/M_\odot$	7.18 ± 0.03
SMSS $\langle r_6''_{\text{ap}} \rangle$	15.45 ± 0.07	$\log M_{\text{H}\beta}/M_\odot$	7.82 ± 0.05
2MASS K_{ext}	11.51 ± 0.06	$\log M_{[\text{O III}]} / M_\odot$	7.78 ± 0.05



Emission Line Measurements

Line	$\log L$ (erg s^{-1})	FWHM (km s^{-1})	σ (km s^{-1})	EW (\AA)
H γ Narrow	39.98 ± 0.09	184 ± 62	227 ± 26	1.25 ± 0.25
Hγ Broad	41.06 ± 0.03	2985 ± 377	1254 ± 44	14.78 ± 0.48
[O III] 4364	39.50 ± 0.18	189 ± 62	76 ± 25	0.41 ± 0.10
He II Narrow	39.89 ± 0.06	189 ± 62	76 ± 25	1.18 ± 0.11
He II Broad	40.88 ± 0.05	8986 ± 77	3816 ± 32	11.37 ± 0.73
H β Narrow	40.50 ± 0.02	184 ± 62	227 ± 26	5.06 ± 0.28
Hβ Broad	41.66 ± 0.01	3725 ± 203	1957 ± 28	72.84 ± 0.64
[O III] 5007	41.26 ± 0.01	184 ± 62	227 ± 26	30.90 ± 0.29
He I Narrow	39.44 ± 0.12	189 ± 62	76 ± 25	0.64 ± 0.11
He I Broad	40.68 ± 0.05	5758 ± 83	2445 ± 34	10.85 ± 0.65
[O I] 6300	39.45 ± 0.12	189 ± 62	76 ± 25	0.74 ± 0.13
H α Narrow	40.94 ± 0.01	189 ± 62	76 ± 25	24.53 ± 0.22
Hα Broad	42.07 ± 0.01	2073 ± 67	1204 ± 25	336.42 ± 0.78
[N II] 6585	40.60 ± 0.01	189 ± 62	76 ± 25	11.35 ± 0.19
[S II] 6718	40.18 ± 0.02	189 ± 62	76 ± 25	4.50 ± 0.16
[S II] 6732	39.97 ± 0.04	189 ± 62	76 ± 25	2.75 ± 0.15

Emission Summary

H α broad SNR	44.60
H β broad SNR	14.45
H γ broad SNR	5.54
AGN frac	0.78
Host frac	0.22
$\log L_{5100, \text{Host}}$	42.91
Fe II/H β	0.98
Fe II/[O III]	2.45

Quality Flags

spurious_hab/hbb	0/0
15100	0
balmer	0
balmer_snr	0
hb_width	1
balmer_width	1