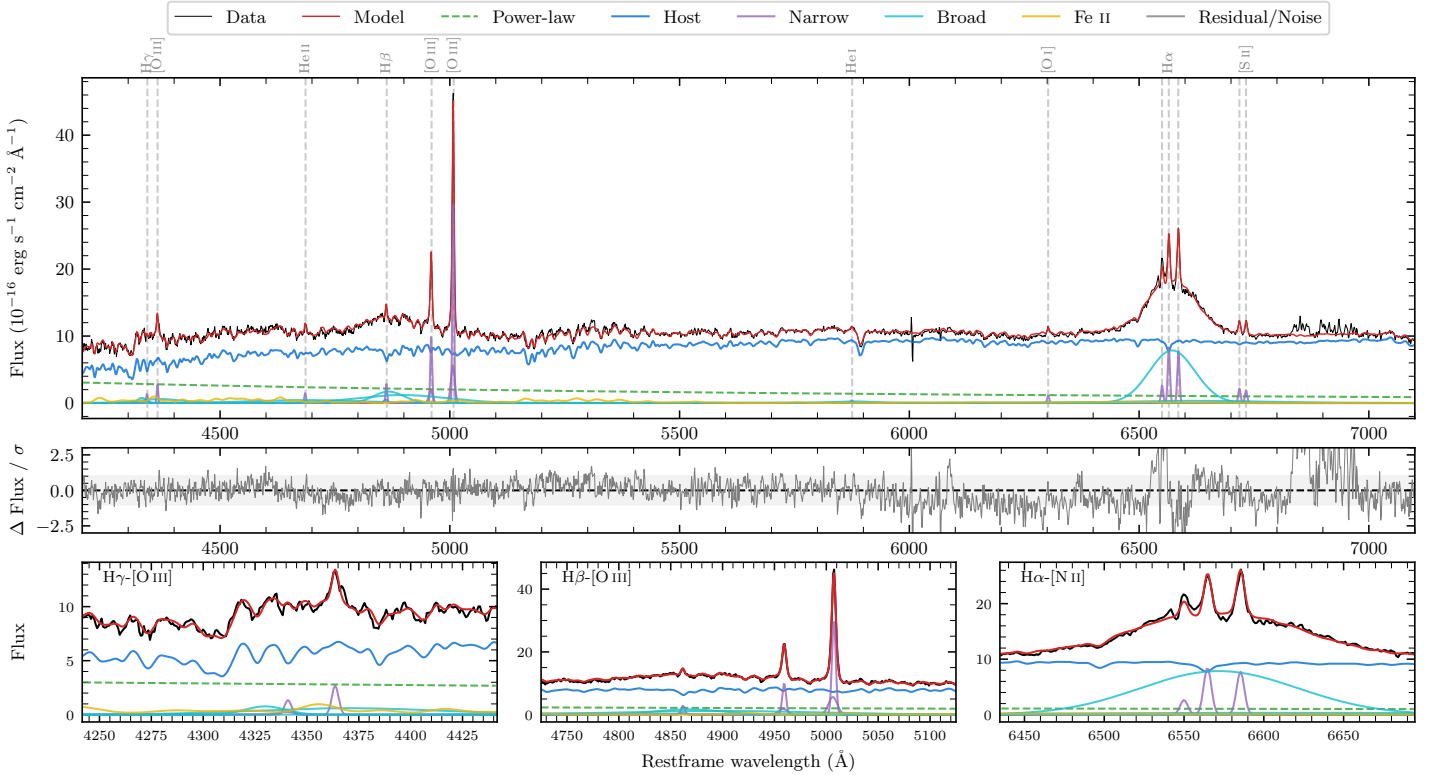
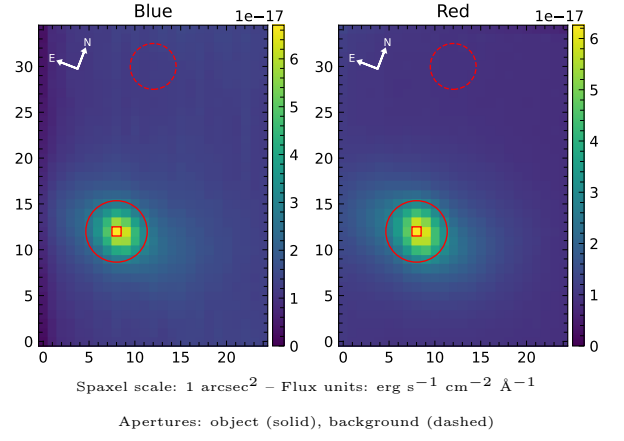


# LEDA 134544

Spectrum ID	3161669_sp1	Spectrum type	Sy 1.2
Alt name	g2340321-263319	Quality flag	good
$z$	0.0490	AGN reference	6dFGS
RA, Dec	355.1335, -26.5553	MW $E(B - V)$	0.015
MJD	59439.65	Power law $\alpha_\nu$	$0.37 \pm 0.11$
SNR/ $\text{\AA}$ B/R	18.3/36.2	$\log L_{5100, \text{AGN}}$	$42.75 \pm 0.03$
Obs airmass	1.02	$\log H\beta_{\text{Br}}/[\text{O III}]$	$0.34 \pm 0.02$
SMSS ID	3161669	$\log M_{L5100}/M_\odot$	$8.02 \pm 0.06$
Neighbour	None $< 15''$	$\log M_{\text{H}\alpha}/M_\odot$	$7.87 \pm 0.01$
SMSS $\langle r_6'' \text{ap} \rangle$	nan $\pm$ nan	$\log M_{\text{H}\beta}/M_\odot$	$8.22 \pm 0.06$
2MASS $K_{\text{ext}}$	$11.55 \pm 0.07$	$\log M_{[\text{O III}]} / M_\odot$	$8.21 \pm 0.06$



## Emission Line Measurements

Line	$\log L$ ( $\text{erg s}^{-1}$ )	FWHM ( $\text{km s}^{-1}$ )	$\sigma$ ( $\text{km s}^{-1}$ )	EW ( $\text{\AA}$ )
H $\gamma$ Narrow	$39.67 \pm 0.14$	$291 \pm 63$	$170 \pm 26$	$2.91 \pm 0.72$
<b>H<math>\gamma</math> Broad</b>	<b><math>40.72 \pm 0.07</math></b>	<b><math>3935 \pm 1918</math></b>	<b><math>2482 \pm 92</math></b>	<b><math>33.05 \pm 2.65</math></b>
[O III] 4364	$39.81 \pm 0.09$	$262 \pm 63$	$110 \pm 25$	$4.07 \pm 0.50$
He II Narrow	$39.58 \pm 0.12$	$262 \pm 63$	$110 \pm 25$	$2.84 \pm 0.51$
<b>He II Broad</b>	<b><math>40.89 \pm 0.06</math></b>	<b><math>17658 \pm 63</math></b>	<b><math>7498 \pm 25</math></b>	<b><math>57.72 \pm 4.35</math></b>
H $\beta$ Narrow	$40.04 \pm 0.05$	$291 \pm 63$	$170 \pm 26$	$8.85 \pm 0.80$
<b>H<math>\beta</math> Broad</b>	<b><math>41.41 \pm 0.02</math></b>	<b><math>6737 \pm 379</math></b>	<b><math>3856 \pm 102</math></b>	<b><math>211.31 \pm 4.38</math></b>
[O III] 5007	$41.07 \pm 0.01$	$291 \pm 63$	$170 \pm 26$	$102.86 \pm 0.92$
He I Narrow	$39.12 \pm 0.19$	$262 \pm 63$	$110 \pm 25$	$1.69 \pm 0.49$
<b>He I Broad</b>	<b><math>40.21 \pm 0.09</math></b>	<b><math>5114 \pm 216</math></b>	<b><math>2172 \pm 91</math></b>	<b><math>20.55 \pm 2.27</math></b>
[O I] 6300	$39.58 \pm 0.07$	$262 \pm 63$	$110 \pm 25$	$5.75 \pm 0.59$
H $\alpha$ Narrow	$40.49 \pm 0.01$	$262 \pm 63$	$110 \pm 25$	$50.73 \pm 0.88$
<b>H<math>\alpha</math> Broad</b>	<b><math>41.82 \pm 0.01</math></b>	<b><math>5453 \pm 71</math></b>	<b><math>2258 \pm 90</math></b>	<b><math>1104.99 \pm 5.41</math></b>
[N II] 6585	$40.45 \pm 0.01$	$262 \pm 63$	$110 \pm 25$	$46.93 \pm 0.88$
[S II] 6718	$39.91 \pm 0.04$	$262 \pm 63$	$110 \pm 25$	$14.15 \pm 0.71$
[S II] 6732	$39.85 \pm 0.04$	$262 \pm 63$	$110 \pm 25$	$12.53 \pm 0.71$

## Emission Summary

H $\alpha$ broad SNR	14.80
H $\beta$ broad SNR	5.18
H $\gamma$ broad SNR	2.15
AGN frac	0.20
Host frac	0.80
$\log L_{5100, \text{Host}}$	43.34
Fe II/H $\beta$	0.37
Fe II/[O III]	0.81

## Quality Flags

spurious_hab/hbb	0/0
15100	2
balmer	0
balmer_snr	1
hb_width	1
balmer_width	0