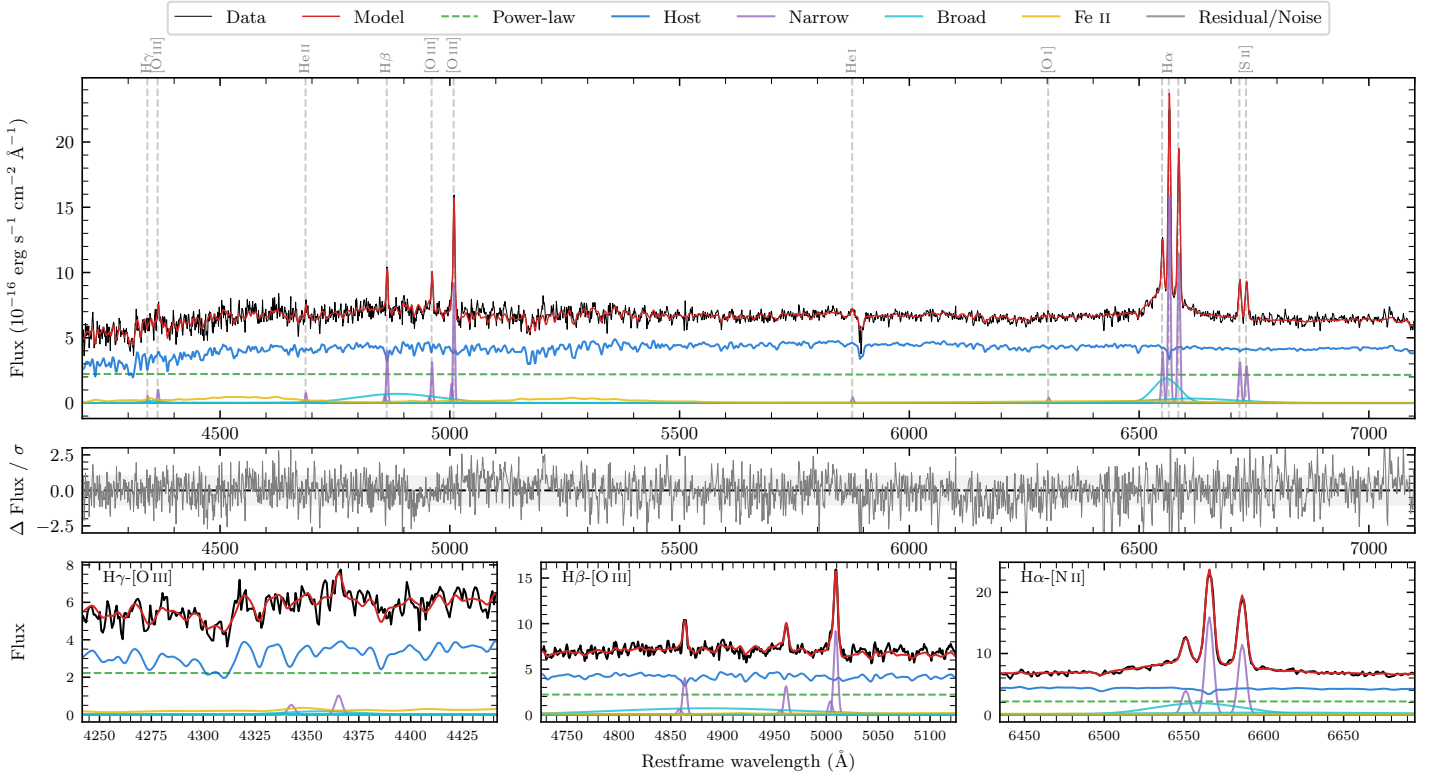
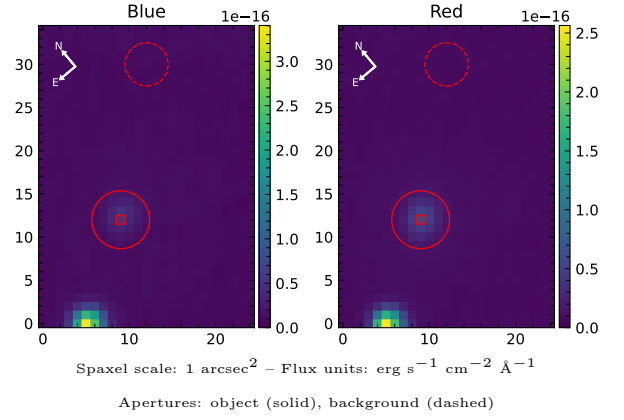


LEDA 676188

Spectrum ID	312993_sp1	Spectrum type	Sy 1.5+
Alt name	g2132248-332705	Quality flag	good
z	0.0695	AGN reference	6dFGS
RA, Dec	323.1034, -33.4512	MW $E(B-V)$	0.053
MJD	60167.53	Power law α_ν	-1.94 ± 0.05
SNR/ \AA B/R	15.3/29.3	$\log L_{5100, \text{AGN}}$	43.12 ± 0.02
Obs airmass	1.06	$\log H\beta_{\text{Br}}/[\text{O III}]$	< -0.35
SMSS ID	312993	$\log M_{L5100}/M_\odot$	—
Neighbour	13.2", 312994	$\log M_{\text{H}\alpha}/M_\odot$	7.21 ± 0.03
SMSS $\langle r_{6''}^{\text{ap}} \rangle$	16.44 ± 0.05	$\log M_{\text{H}\beta}/M_\odot$	—
2MASS K_{ext}	12.07 ± 0.07	$\log M_{[\text{O III}]} / M_\odot$	—



Emission Line Measurements

Line	$\log L$ (erg s ⁻¹)	FWHM (km s ⁻¹)	σ (km s ⁻¹)	EW (Å)
H γ Narrow	39.51 ± 0.28	288 ± 63	158 ± 26	1.24 ± 0.51
Hγ Broad	—	—	—	—
[O III] 4364	39.74 ± 0.17	273 ± 62	115 ± 25	2.10 ± 0.45
He II Narrow	39.63 ± 0.21	273 ± 62	115 ± 25	1.66 ± 0.41
He II Broad	—	—	—	—
H β Narrow	40.44 ± 0.04	288 ± 63	158 ± 26	10.62 ± 0.49
Hβ Broad	< 40.47	—	—	—
[O III] 5007	40.82 ± 0.02	288 ± 63	158 ± 26	25.47 ± 0.52
He I Narrow	39.49 ± 0.15	273 ± 62	115 ± 25	1.22 ± 0.27
He I Broad	39.80 ± 0.46	12935 ± 63	5493 ± 25	2.45 ± 2.34
[O I] 6300	39.50 ± 0.14	273 ± 62	115 ± 25	1.25 ± 0.24
H α Narrow	41.10 ± 0.01	273 ± 62	115 ± 25	49.81 ± 0.33
Hα Broad	41.43 ± 0.01	3339 ± 79	1923 ± 58	106.67 ± 1.76
[N II] 6585	40.96 ± 0.01	273 ± 62	115 ± 25	35.86 ± 0.33
[S II] 6718	40.40 ± 0.02	273 ± 62	115 ± 25	10.03 ± 0.29
[S II] 6732	40.36 ± 0.02	273 ± 62	115 ± 25	9.14 ± 0.29

Emission Summary

H α broad SNR	5.25
H β broad SNR	0.28
H γ broad SNR	0.00
AGN frac	0.36
Host frac	0.64
$\log L_{5100, \text{Host}}$	43.37
Fe II/H β	—
Fe II/[O III]	—

Quality Flags

spurious_hab/hbb	0/1
15100	1
balmer	2
balmer_snr	2
hb_width	2
balmer_width	2