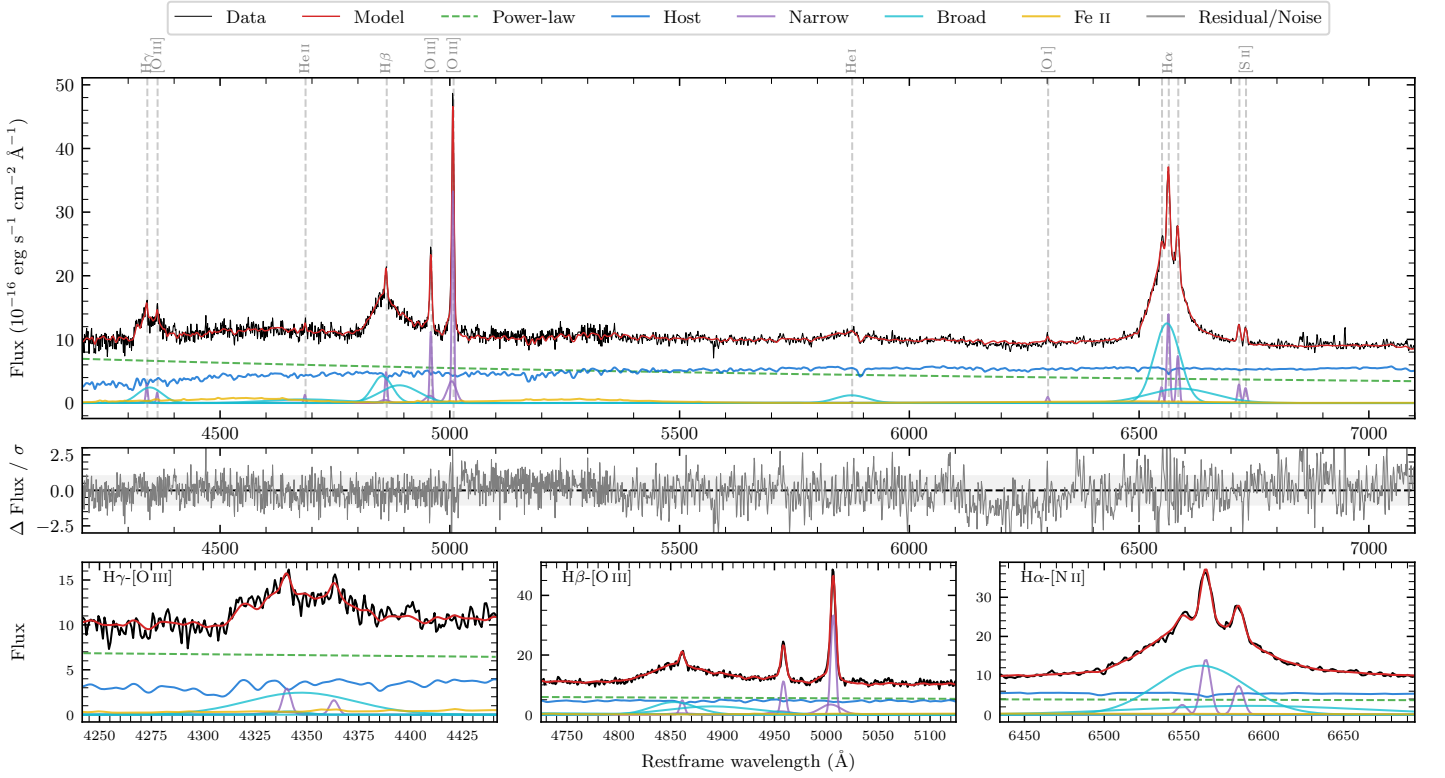
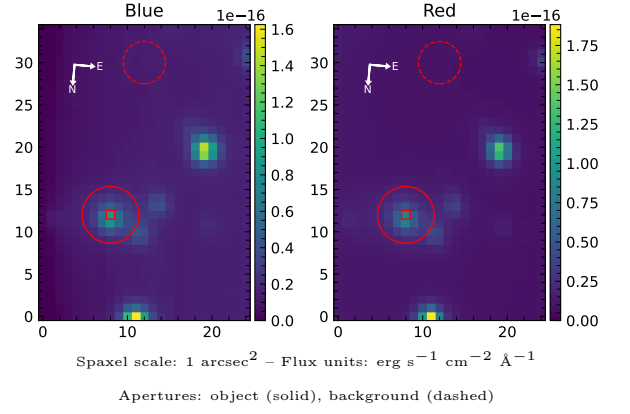


2MASS J15080462–4244448

| | | | |
|--|--------------------|--|------------------|
| Spectrum ID | 310181797_sp3 | Spectrum type | Sy 1.5 |
| Alt name | g1508046–424445 | Quality flag | good |
| z | 0.0562 | AGN reference | 6dFGS |
| RA, Dec | 227.0190, –42.7458 | MW $E(B - V)$ | 0.106 |
| MJD | 59726.6 | Power law α_ν | -0.66 ± 0.17 |
| SNR/ \AA B/R | 13.9/27.7 | $\log L_{5100, \text{AGN}}$ | 43.32 ± 0.03 |
| Obs airmass | 1.07 | $\log H\beta_{\text{Br}}/[\text{O III}]$ | 0.27 ± 0.01 |
| SMSS ID | 310181797 | $\log M_{L5100}/M_\odot$ | 7.91 ± 0.05 |
| Neighbour | 5.0", 2460485054 | $\log M_{\text{H}\alpha}/M_\odot$ | 7.55 ± 0.02 |
| SMSS $\langle r_{6''}^{\text{ap}} \rangle$ | 16.41 ± 0.08 | $\log M_{\text{H}\beta}/M_\odot$ | 7.96 ± 0.05 |
| 2MASS K_{ext} | 12.45 ± 0.12 | $\log M_{[\text{O III}]} / M_\odot$ | 7.99 ± 0.05 |



Emission Line Measurements

| Line | $\log L$ (erg s^{-1}) | FWHM (km s^{-1}) | σ (km s^{-1}) | EW (\AA) |
|-----------------------------------|------------------------------------|-----------------------------------|---------------------------------|-------------------------------------|
| H γ Narrow | 40.24 ± 0.11 | 357 ± 63 | 357 ± 27 | 3.41 ± 0.67 |
| Hγ Broad | 41.14 ± 0.04 | 3822 ± 385 | 1520 ± 59 | 26.74 ± 1.25 |
| [O III] 4364 | 39.83 ± 0.18 | 334 ± 63 | 141 ± 25 | 1.33 ± 0.33 |
| He II Narrow | 39.76 ± 0.17 | 334 ± 63 | 141 ± 25 | 1.25 ± 0.32 |
| He II Broad | 40.99 ± 0.07 | 12538 ± 133 | 5324 ± 56 | 21.19 ± 1.97 |
| H β Narrow | 40.51 ± 0.05 | 357 ± 63 | 357 ± 27 | 7.38 ± 0.67 |
| Hβ Broad | 41.63 ± 0.01 | 4464 ± 230 | 1958 ± 40 | 97.46 ± 1.43 |
| [O III] 5007 | 41.36 ± 0.01 | 357 ± 63 | 357 ± 27 | 54.70 ± 0.70 |
| He I Narrow | 38.99 ± 0.39 | 334 ± 63 | 141 ± 25 | 0.29 ± 0.20 |
| He I Broad | 40.93 ± 0.02 | 4148 ± 85 | 1761 ± 35 | 25.17 ± 0.78 |
| [O I] 6300 | 39.76 ± 0.08 | 334 ± 63 | 141 ± 25 | 1.86 ± 0.22 |
| H α Narrow | 40.95 ± 0.01 | 334 ± 63 | 141 ± 25 | 30.32 ± 0.34 |
| Hα Broad | 42.02 ± 0.01 | 3304 ± 67 | 1525 ± 26 | 355.67 ± 1.36 |
| [N II] 6585 | 40.67 ± 0.02 | 334 ± 63 | 141 ± 25 | 15.98 ± 0.31 |
| [S II] 6718 | 40.27 ± 0.03 | 334 ± 63 | 141 ± 25 | 6.61 ± 0.26 |
| [S II] 6732 | 40.18 ± 0.03 | 334 ± 63 | 141 ± 25 | 5.40 ± 0.26 |

Emission Summary

| | |
|------------------------------|-------|
| H α broad SNR | 19.66 |
| H β broad SNR | 8.35 |
| H γ broad SNR | 3.87 |
| AGN frac | 0.54 |
| Host frac | 0.46 |
| $\log L_{5100, \text{Host}}$ | 43.24 |
| Fe II/H β | 0.39 |
| Fe II/[O III] | 0.71 |

Quality Flags

| | |
|------------------|-----|
| spurious_hab/hbb | 0/0 |
| 15100 | 0 |
| balmer | 0 |
| balmer_snr | 0 |
| hb_width | 0 |
| balmer_width | 0 |