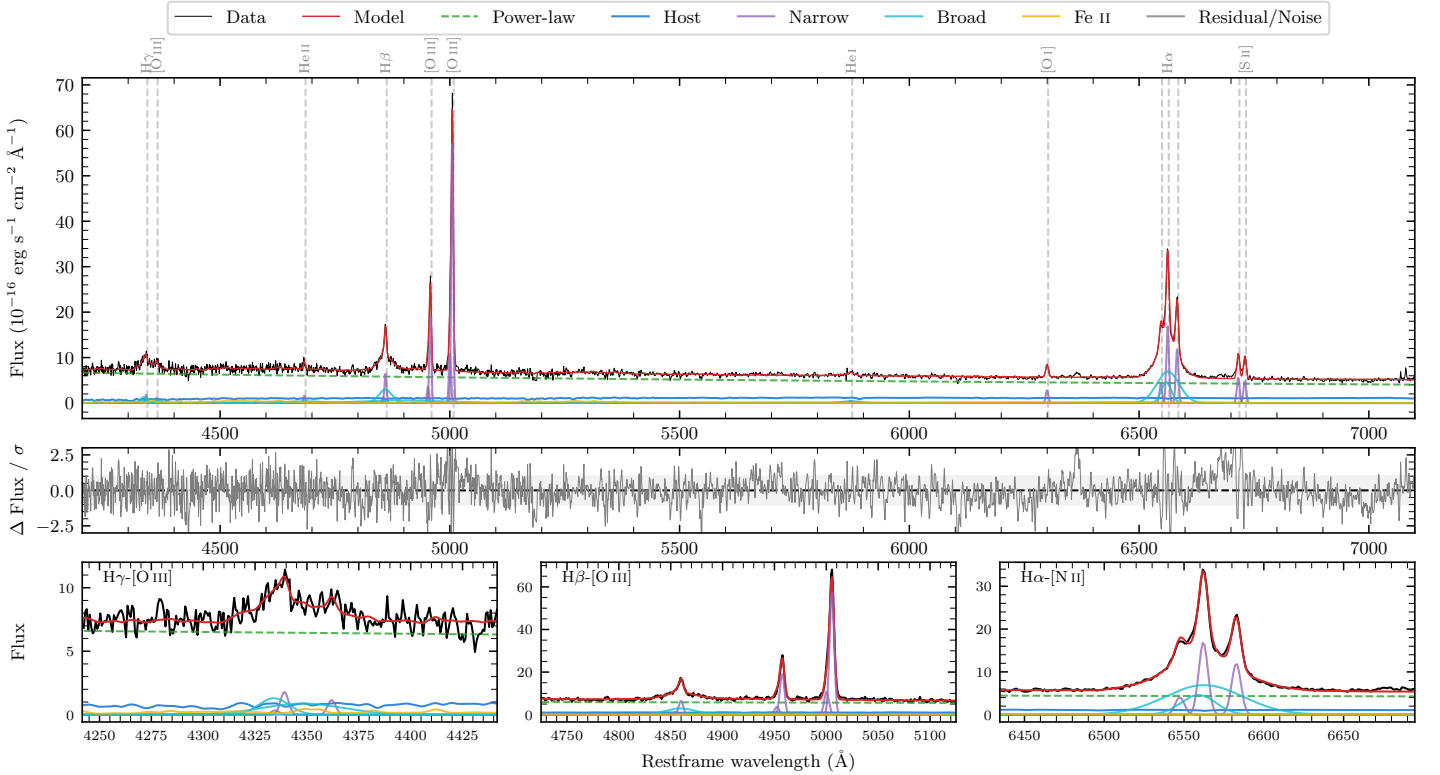
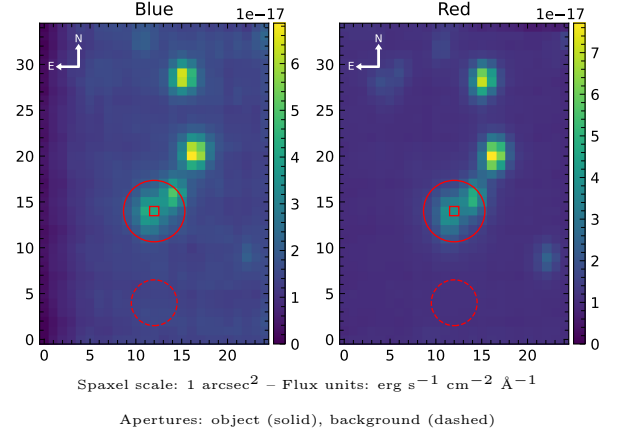


LEDA 2816917

Spectrum ID	308745927_sp1	Spectrum type	Sy 1.5
Alt name	g1438031-450146	Quality flag	good
z	0.0740	AGN reference	6dFGS
RA, Dec	219.5128, -45.0294	MW $E(B - V)$	0.133
MJD	60055.61	Power law α_ν	-1.05 ± 0.05
SNR/ \AA B/R	13.6/16.9	$\log L_{5100, \text{AGN}}$	43.59 ± 0.01
Obs airmass	1.03	$\log H\beta_{\text{Br}}/[\text{O III}]$	-0.20 ± 0.03
SMSS ID	308745927	$\log M_{L5100}/M_\odot$	7.49 ± 0.04
Neighbour	0.9", 2458118525	$\log M_{\text{H}\alpha}/M_\odot$	6.99 ± 0.04
SMSS $\langle r_{6''}^{\text{ap}} \rangle$	16.75 ± 0.06	$\log M_{\text{H}\beta}/M_\odot$	7.39 ± 0.04
2MASS K_{ext}	13.33 ± 0.15	$\log M_{[\text{O III}]} / M_\odot$	7.64 ± 0.03



Emission Line Measurements

Line	$\log L$ (erg s ⁻¹)	FWHM (km s ⁻¹)	σ (km s ⁻¹)	EW (Å)
H γ Narrow	40.18 ± 0.14	342 ± 63	175 ± 25	1.71 ± 0.24
Hγ Broad	40.98 ± 0.06	1784 ± 431	984 ± 87	11.05 ± 0.67
[O III] 4364	39.91 ± 0.17	316 ± 63	133 ± 25	0.94 ± 0.25
He II Narrow	40.09 ± 0.09	316 ± 63	133 ± 25	1.49 ± 0.20
He II Broad	40.77 ± 0.09	6345 ± 232	2694 ± 98	7.24 ± 0.90
H β Narrow	40.79 ± 0.03	342 ± 63	175 ± 25	7.82 ± 0.24
Hβ Broad	41.54 ± 0.03	2397 ± 93	2540 ± 122	43.71 ± 1.43
[O III] 5007	41.75 ± 0.01	342 ± 63	175 ± 25	72.25 ± 0.30
He I Narrow	39.64 ± 0.22	316 ± 63	133 ± 25	0.66 ± 0.25
He I Broad	40.49 ± 0.09	2453 ± 198	1041 ± 84	4.82 ± 0.55
[O I] 6300	40.46 ± 0.03	316 ± 63	133 ± 25	4.67 ± 0.19
H α Narrow	41.26 ± 0.01	316 ± 63	133 ± 25	30.26 ± 0.26
Hα Broad	41.91 ± 0.01	1874 ± 75	830 ± 25	135.73 ± 0.65
[N II] 6585	41.11 ± 0.01	316 ± 63	133 ± 25	21.53 ± 0.24
[S II] 6718	40.79 ± 0.01	316 ± 63	133 ± 25	10.56 ± 0.22
[S II] 6732	40.72 ± 0.02	316 ± 63	133 ± 25	9.11 ± 0.28

Emission Summary

H α broad SNR	21.49
H β broad SNR	6.61
H γ broad SNR	3.62
AGN frac	0.85
Host frac	0.15
$\log L_{5100, \text{Host}}$	42.83
Fe II/H β	0.46
Fe II/[O III]	0.28

Quality Flags

spurious_hab/hbb	0/0
15100	0
balmer	0
balmer_snr	0
hb_width	2
balmer_width	0