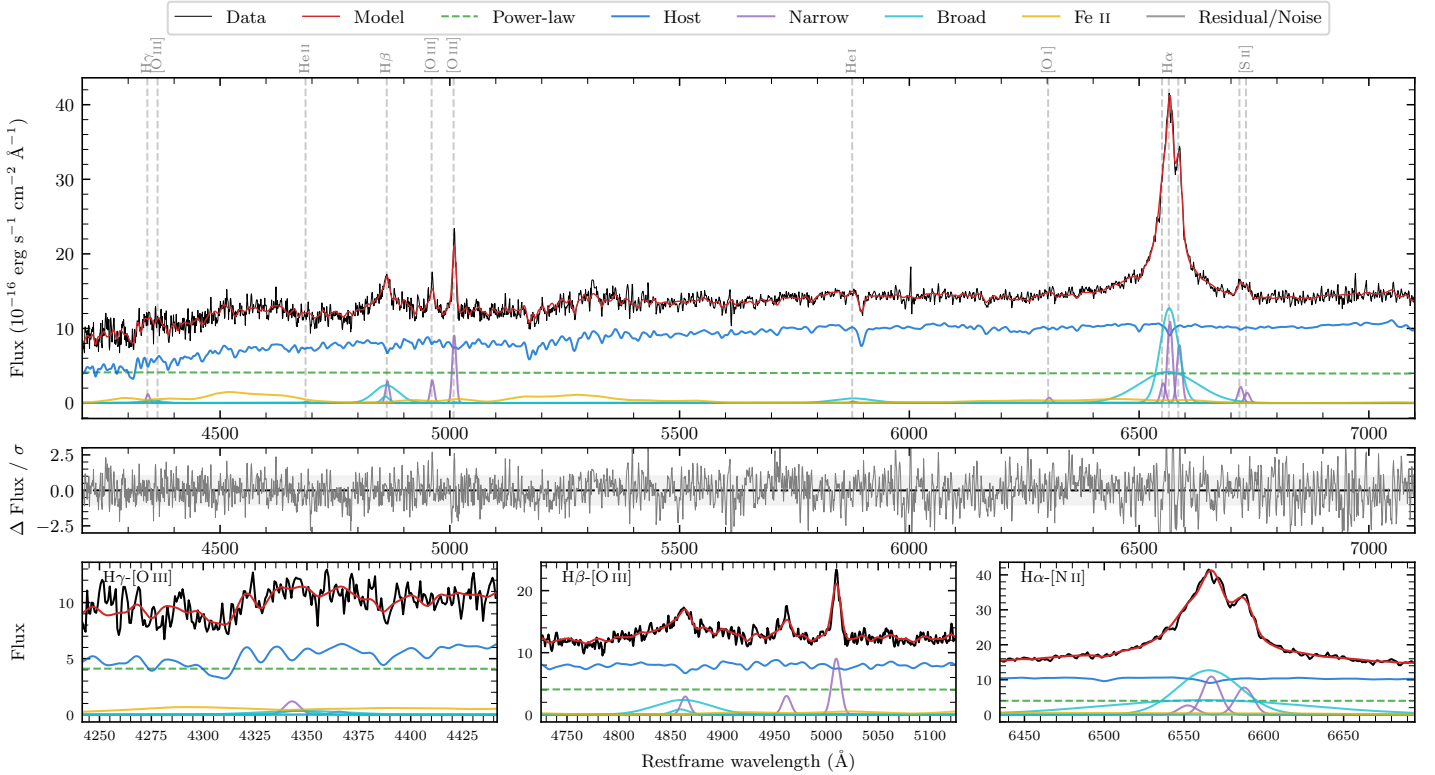
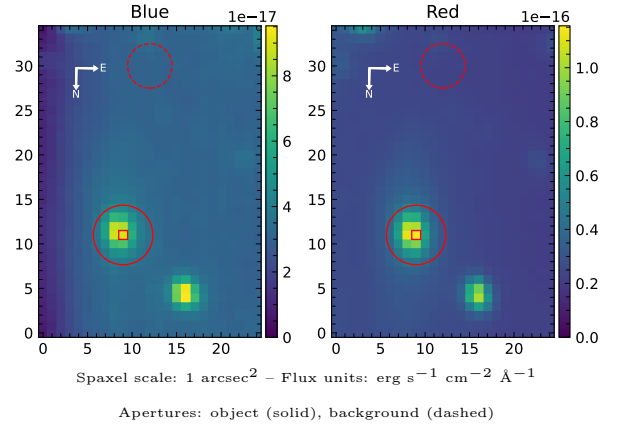


# ESO 327-25

Spectrum ID	308543986_sp1	Spectrum type	Sy 1.5
Alt name	g1452310-422625	Quality flag	good
$z$	0.0498	AGN reference	6dFGS
RA, Dec	223.1292, -42.4402	MW $E(B-V)$	0.101
MJD	59080.36	Power law $\alpha_\nu$	$-1.92 \pm 0.07$
SNR/ $\text{\AA}$ B/R	14.9/32.8	$\log L_{5100, \text{AGN}}$	$43.08 \pm 0.03$
Obs airmass	1.08	$\log H\beta_{\text{Br}}/[\text{O III}]$	$0.25 \pm 0.04$
SMSS ID	308543986	$\log M_{L5100}/M_\odot$	$7.45 \pm 0.17$
Neighbour	10.0", 308543989	$\log M_{H\alpha}/M_\odot$	$7.26 \pm 0.02$
SMSS $\langle r_{6''}^{\text{ap}} \rangle$	$15.59 \pm 0.02$	$\log M_{H\beta}/M_\odot$	$7.34 \pm 0.18$
2MASS $K_{\text{ext}}$	$10.85 \pm 0.07$	$\log M_{[\text{O III}]} / M_\odot$	$7.35 \pm 0.18$



## Emission Line Measurements

Line	$\log L$ (erg s <sup>-1</sup> )	FWHM (km s <sup>-1</sup> )	$\sigma$ (km s <sup>-1</sup> )	EW (Å)
H $\gamma$ Narrow	$39.85 \pm 0.25$	$609 \pm 63$	$264 \pm 26$	$2.90 \pm 0.91$
<b>H<math>\gamma</math> Broad</b>	<b><math>40.25 \pm 0.21</math></b>	<b><math>1876 \pm 646</math></b>	<b><math>986 \pm 139</math></b>	<b><math>6.43 \pm 1.83</math></b>
[O III] 4364	—	—	—	—
He II Narrow	—	—	—	—
<b>He II Broad</b>	—	—	—	—
H $\beta$ Narrow	$40.29 \pm 0.09$	$609 \pm 63$	$264 \pm 26$	$8.10 \pm 0.78$
<b>H<math>\beta</math> Broad</b>	<b><math>41.04 \pm 0.03</math></b>	<b><math>2945 \pm 587</math></b>	<b><math>1334 \pm 47</math></b>	<b><math>45.90 \pm 1.63</math></b>
[O III] 5007	$40.79 \pm 0.02$	$609 \pm 63$	$264 \pm 26$	$25.70 \pm 0.79$
He I Narrow	$39.22 \pm 0.37$	$605 \pm 63$	$257 \pm 25$	$0.72 \pm 0.37$
<b>He I Broad</b>	<b><math>40.62 \pm 0.06</math></b>	<b><math>5247 \pm 63</math></b>	<b><math>2228 \pm 25</math></b>	<b><math>17.87 \pm 1.16</math></b>
[O I] 6300	$39.77 \pm 0.11$	$605 \pm 63$	$257 \pm 25$	$2.56 \pm 0.40$
H $\alpha$ Narrow	$40.97 \pm 0.02$	$605 \pm 63$	$257 \pm 25$	$40.76 \pm 0.54$
<b>H<math>\alpha</math> Broad</b>	<b><math>41.90 \pm 0.01</math></b>	<b><math>2559 \pm 69</math></b>	<b><math>1492 \pm 25</math></b>	<b><math>343.11 \pm 1.54</math></b>
[N II] 6585	$40.83 \pm 0.02$	$605 \pm 63$	$257 \pm 25$	$29.08 \pm 0.51$
[S II] 6718	$40.28 \pm 0.04$	$605 \pm 63$	$257 \pm 25$	$8.29 \pm 0.44$
[S II] 6732	$40.09 \pm 0.06$	$605 \pm 63$	$257 \pm 25$	$5.28 \pm 0.43$

## Emission Summary

H $\alpha$ broad SNR	20.76
H $\beta$ broad SNR	3.99
H $\gamma$ broad SNR	1.01
AGN frac	0.34
Host frac	0.66
$\log L_{5100, \text{Host}}$	43.37
Fe II/H $\beta$	1.77
Fe II/[O III]	3.17

## Quality Flags

spurious_hab/hbb	0/0
15100	1
balmer	0
balmer_snr	1
hb_width	0
balmer_width	0