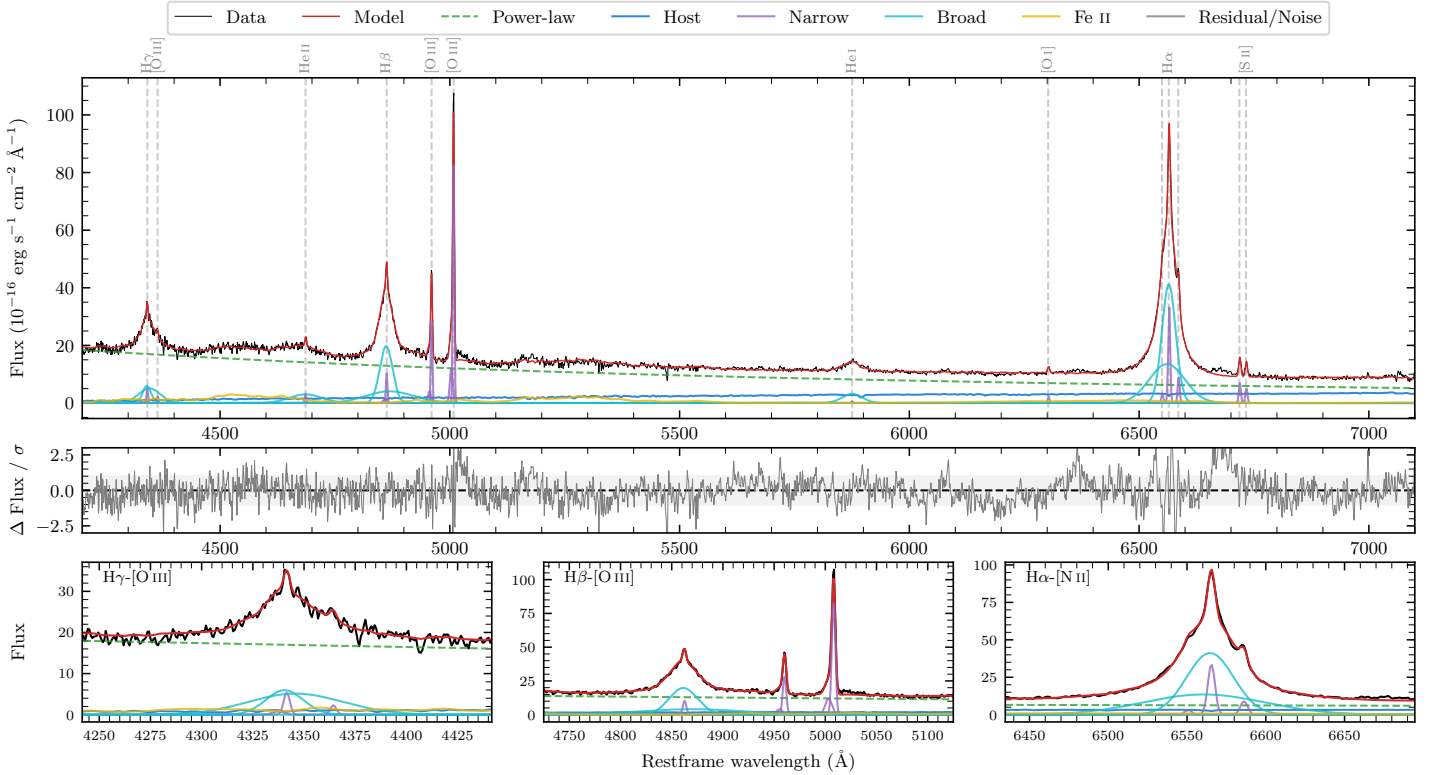
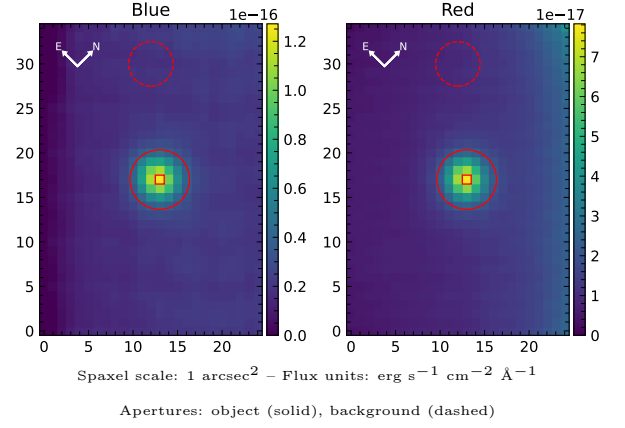


# 2MASS J13543948–4214564

Spectrum ID	308129573_sp1	Spectrum type	Sy 1.2
Alt name	g1354395–421457	Quality flag	good
$z$	0.0763	AGN reference	6dFGS
RA, Dec	208.6645, –42.2490	MW $E(B - V)$	0.070
MJD	60382.77	Power law $\alpha_\nu$	$0.42 \pm 0.06$
SNR/ $\text{\AA}$ B/R	17.4/16.8	$\log L_{5100, \text{AGN}}$	$43.92 \pm 0.01$
Obs airmass	1.10	$\log H\beta_{\text{Br}}/[\text{O III}]$	$0.42 \pm 0.01$
SMSS ID	308129573	$\log M_{L5100}/M_\odot$	$7.59 \pm 0.02$
Neighbour	12.9", 1373820705	$\log M_{\text{H}\alpha}/M_\odot$	$7.46 \pm 0.04$
SMSS $\langle r_6''_{\text{ap}} \rangle$	$15.73 \pm 0.10$	$\log M_{\text{H}\beta}/M_\odot$	$7.67 \pm 0.02$
2MASS $K_{\text{ext}}$	$11.94 \pm 0.05$	$\log M_{[\text{O III}]} / M_\odot$	$7.65 \pm 0.02$



## Emission Line Measurements

Line	$\log L$ ( $\text{erg s}^{-1}$ )	FWHM ( $\text{km s}^{-1}$ )	$\sigma$ ( $\text{km s}^{-1}$ )	EW ( $\text{\AA}$ )
H $\gamma$ Narrow	$40.60 \pm 0.09$	$264 \pm 63$	$176 \pm 25$	$1.64 \pm 0.18$
<b>H<math>\gamma</math> Broad</b>	<b><math>41.82 \pm 0.02</math></b>	<b><math>2186 \pm 180</math></b>	<b><math>1077 \pm 47</math></b>	<b><math>27.39 \pm 0.52</math></b>
[O III] 4364	$40.12 \pm 0.16$	$247 \pm 63$	$104 \pm 25$	$0.56 \pm 0.13$
He II Narrow	$40.31 \pm 0.09$	$247 \pm 63$	$104 \pm 25$	$1.02 \pm 0.14$
<b>He II Broad</b>	<b><math>41.61 \pm 0.03</math></b>	<b><math>5296 \pm 222</math></b>	<b><math>2249 \pm 94</math></b>	<b><math>20.15 \pm 0.65</math></b>
H $\beta$ Narrow	$40.93 \pm 0.04$	$264 \pm 63$	$176 \pm 25$	$4.62 \pm 0.23$
<b>H<math>\beta</math> Broad</b>	<b><math>42.27 \pm 0.01</math></b>	<b><math>2287 \pm 47</math></b>	<b><math>1372 \pm 44</math></b>	<b><math>101.65 \pm 0.88</math></b>
[O III] 5007	$41.86 \pm 0.01$	$264 \pm 63$	$176 \pm 25$	$41.62 \pm 0.28$
He I Narrow	$39.65 \pm 0.27$	$247 \pm 63$	$104 \pm 25$	$0.38 \pm 0.17$
<b>He I Broad</b>	<b><math>41.43 \pm 0.02</math></b>	<b><math>2617 \pm 118</math></b>	<b><math>1111 \pm 49</math></b>	<b><math>22.74 \pm 0.61</math></b>
[O I] 6300	$40.27 \pm 0.07$	$247 \pm 63$	$104 \pm 25$	$1.89 \pm 0.19$
H $\alpha$ Narrow	$41.47 \pm 0.01$	$247 \pm 63$	$104 \pm 25$	$32.91 \pm 0.36$
<b>H<math>\alpha</math> Broad</b>	<b><math>42.64 \pm 0.01</math></b>	<b><math>1904 \pm 65</math></b>	<b><math>938 \pm 25</math></b>	<b><math>490.50 \pm 1.13</math></b>
[N II] 6585	$40.90 \pm 0.02$	$247 \pm 63$	$104 \pm 25$	$8.88 \pm 0.29$
[S II] 6718	$40.80 \pm 0.02$	$247 \pm 63$	$104 \pm 25$	$7.39 \pm 0.30$
[S II] 6732	$40.67 \pm 0.04$	$247 \pm 63$	$104 \pm 25$	$5.53 \pm 0.35$

## Emission Summary

H $\alpha$ broad SNR	56.75
H $\beta$ broad SNR	24.73
H $\gamma$ broad SNR	11.31
AGN frac	0.87
Host frac	0.13
$\log L_{5100, \text{Host}}$	43.11
Fe II/H $\beta$	0.51
Fe II/[O III]	1.34

## Quality Flags

spurious_hab/hbb	0/0
15100	2
balmer	0
balmer_snr	0
hb_width	1
balmer_width	0