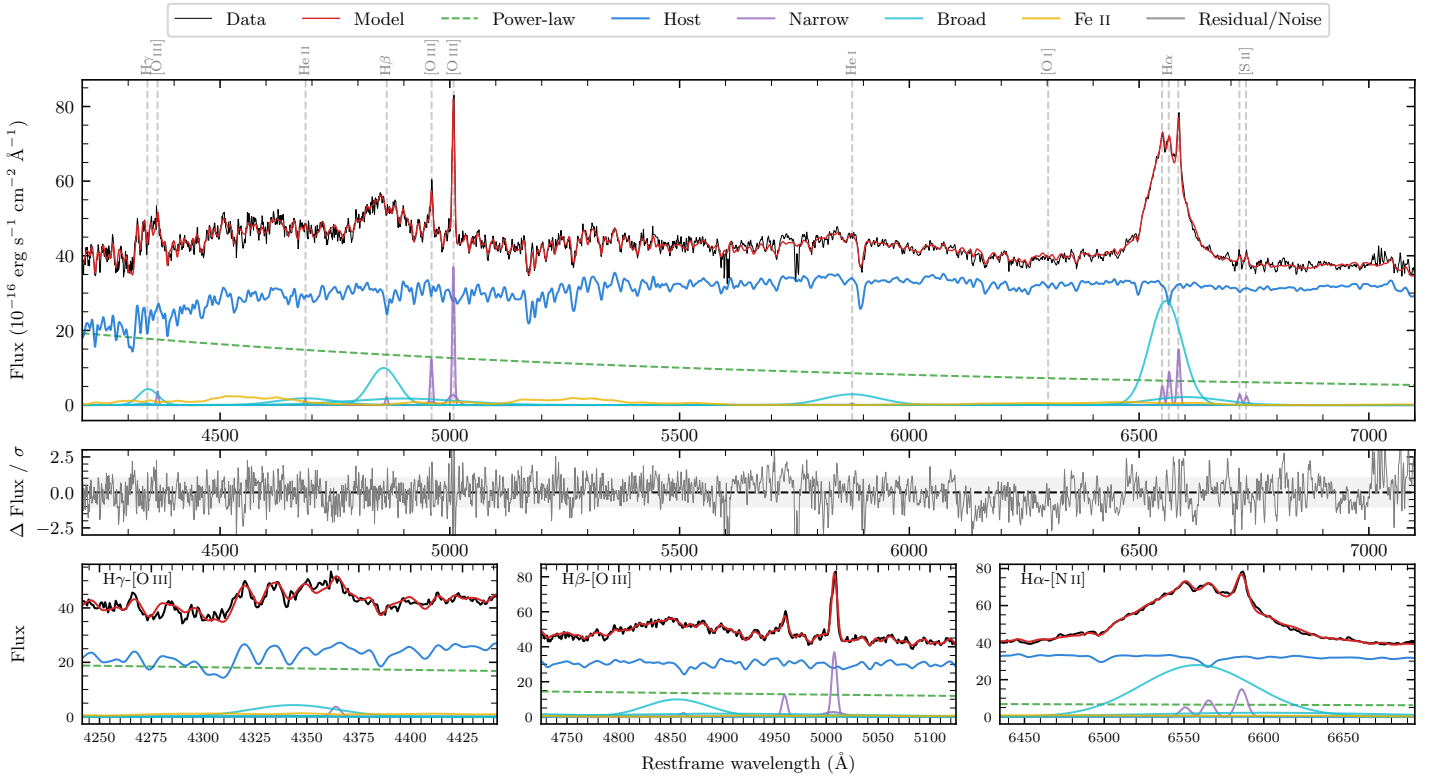
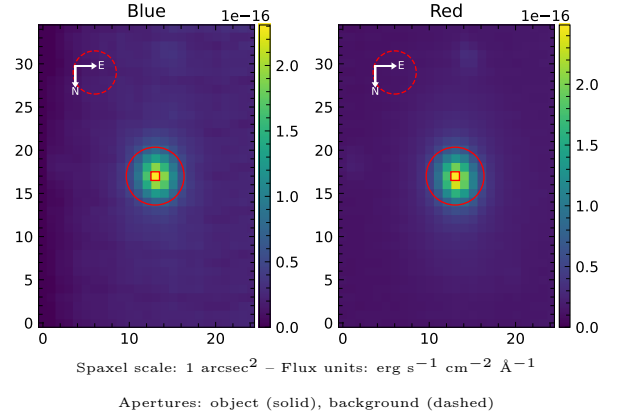


LEDA 3098145

Spectrum ID	307031075_sp4	Spectrum type	Sy 1.2
Alt name	g1514487-402153	Quality flag	good
z	0.0238	AGN reference	6dFGS
RA, Dec	228.7029, -40.3648	MW $E(B - V)$	0.094
MJD	60379.77	Power law α_ν	0.43 ± 0.06
SNR/ \AA B/R	32.7/45.2	$\log L_{5100, \text{AGN}}$	42.90 ± 0.02
Obs airmass	1.02	$\log H\beta_{\text{Br}}/[\text{O III}]$	0.40 ± 0.13
SMSS ID	307031075	$\log M_{L5100}/M_\odot$	7.73 ± 0.03
Neighbour	13.8", 307031145	$\log M_{\text{H}\alpha}/M_\odot$	7.44 ± 0.02
SMSS $\langle r_{6''}^{\text{ap}} \rangle$	14.88 ± 0.01	$\log M_{\text{H}\beta}/M_\odot$	7.68 ± 0.08
2MASS K_{ext}	10.83 ± 0.04	$\log M_{[\text{O III}]} / M_\odot$	7.61 ± 0.04



Emission Line Measurements

Line	$\log L$ (erg s ⁻¹)	FWHM (km s ⁻¹)	σ (km s ⁻¹)	EW (Å)
H γ Narrow	—	—	—	—
Hγ Broad	40.52 ± 0.04	3345 ± 92	1243 ± 28	14.02 ± 0.71
[O III] 4364	39.43 ± 0.15	359 ± 63	152 ± 25	1.20 ± 0.22
He II Narrow	39.08 ± 0.24	359 ± 63	152 ± 25	0.63 ± 0.21
He II Broad	—	—	—	—
H β Narrow	39.35 ± 0.17	375 ± 63	314 ± 35	1.30 ± 0.44
Hβ Broad	$41.00^{+0.23}_{-0.02}$	4447 ± 30	1641 ± 25	57.72 ± 0.87
[O III] 5007	40.60 ± 0.02	375 ± 63	315 ± 35	24.67 ± 0.50
He I Narrow	38.60 ± 0.41	359 ± 63	152 ± 25	0.37 ± 0.28
He I Broad	40.77 ± 0.02	7343 ± 65	3118 ± 26	53.29 ± 1.50
[O I] 6300	38.53 ± 0.44	359 ± 63	152 ± 25	0.37 ± 0.33
H α Narrow	39.99 ± 0.03	359 ± 63	152 ± 25	11.64 ± 0.44
Hα Broad	41.58 ± 0.01	3948 ± 65	1608 ± 33	455.46 ± 1.96
[N II] 6585	40.21 ± 0.02	359 ± 63	152 ± 25	19.80 ± 0.45
[S II] 6718	39.50 ± 0.08	359 ± 63	152 ± 25	4.01 ± 0.46
[S II] 6732	39.43 ± 0.09	359 ± 63	152 ± 25	3.46 ± 0.43

Emission Summary

H α broad SNR	20.91
H β broad SNR	6.99
H γ broad SNR	3.41
AGN frac	0.29
Host frac	0.71
$\log L_{5100, \text{Host}}$	43.28
Fe II/H β	—
Fe II/[O III]	—

Quality Flags

spurious_hab/hbb	0/2
15100	2
balmer	0
balmer_snr	0
hb_width	0
balmer_width	0