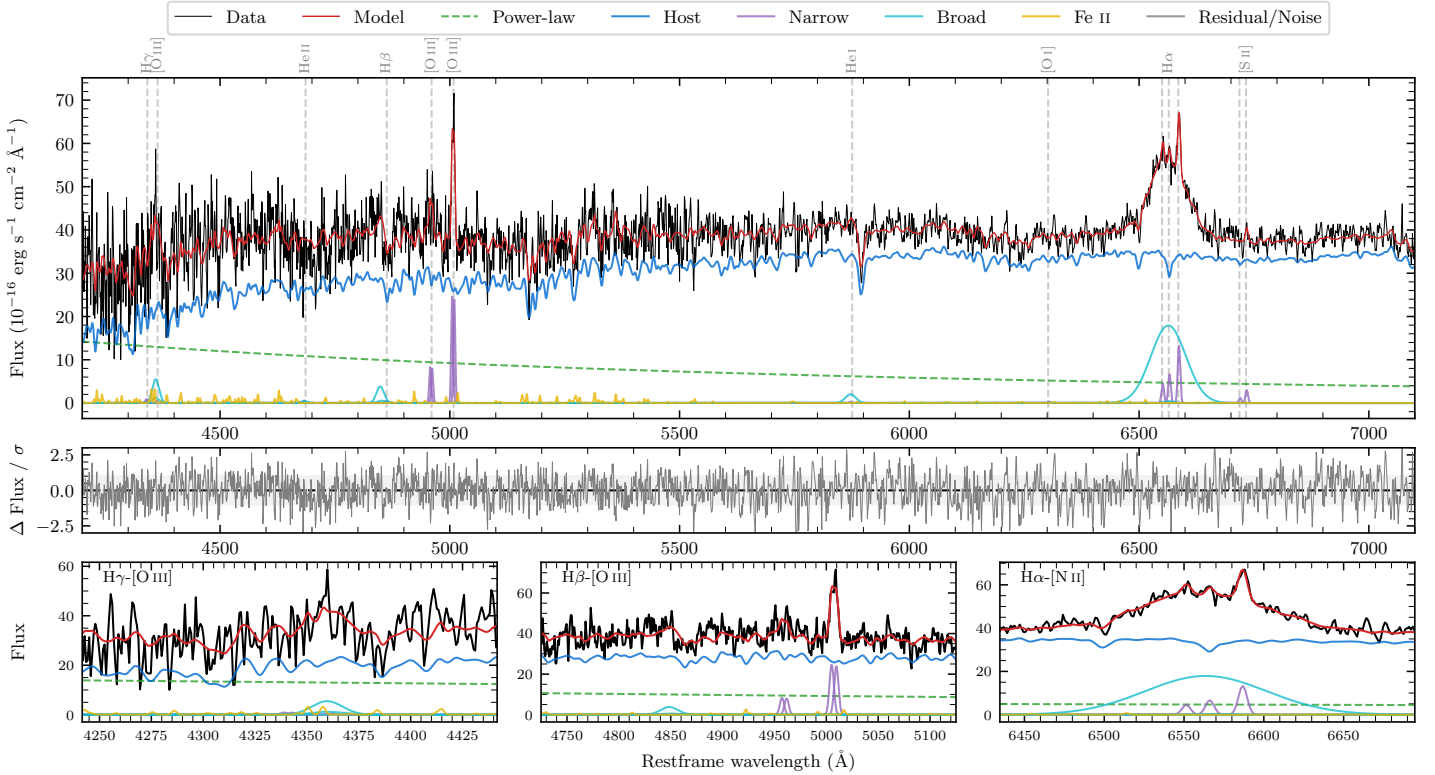
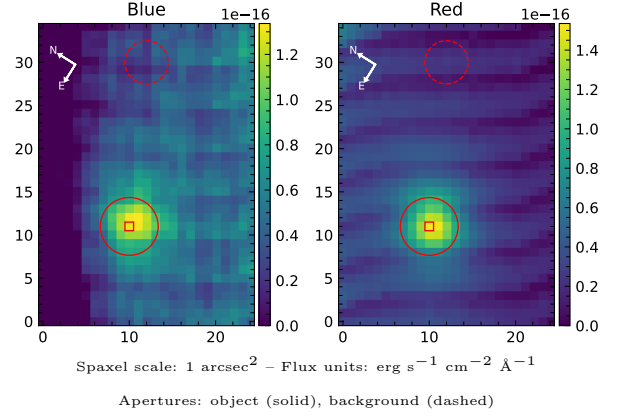


LEDA 3098145

Spectrum ID	307031075_sp3	Spectrum type	Sy 1.5+
Alt name	g1514487-402153	Quality flag	good
z	0.0238	AGN reference	6dFGS
RA, Dec	228.7029, -40.3648	MW $E(B - V)$	0.094
MJD	59351.54	Power law α_ν	0.49 ± 0.01
SNR/ \AA B/R	7.5/20.0	$\log L_{5100, \text{AGN}}$	42.76 ± 0.06
Obs airmass	1.02	$\log H\beta_{\text{Br}}/[\text{O III}]$	< 0.07
SMSS ID	307031075	$\log M_{L5100}/M_\odot$	—
Neighbour	13.8", 307031145	$\log M_{\text{H}\alpha}/M_\odot$	7.32 ± 0.03
SMSS $\langle r_6^{\text{ap}} \rangle$	14.88 ± 0.01	$\log M_{\text{H}\beta}/M_\odot$	—
2MASS K_{ext}	10.83 ± 0.04	$\log M_{[\text{O III}]} / M_\odot$	—



Emission Line Measurements

Line	$\log L$ (erg s $^{-1}$)	FWHM (km s $^{-1}$)	σ (km s $^{-1}$)	EW (A)
H γ Narrow	—	—	—	—
Hγ Broad	—	—	—	—
[O III] 4364	—	—	—	—
He II Narrow	—	—	—	—
He II Broad	—	—	—	—
H β Narrow	—	—	—	—
Hβ Broad	< 40.60	—	—	—
[O III] 5007	40.53 ± 0.03	535 ± 63	183 ± 25	28.54 ± 1.21
He I Narrow	—	—	—	—
He I Broad	39.88 ± 0.15	1360 ± 62	577 ± 25	9.49 ± 1.74
[O I] 6300	—	—	—	—
H α Narrow	39.78 ± 0.08	293 ± 62	124 ± 25	9.95 ± 1.06
Hα Broad	41.36 ± 0.01	4028 ± 89	1511 ± 25	376.24 ± 4.21
[N II] 6585	40.08 ± 0.04	293 ± 62	124 ± 25	20.00 ± 1.07
[S II] 6718	39.04 ± 0.37	293 ± 62	124 ± 25	1.93 ± 1.33
[S II] 6732	39.44 ± 0.16	293 ± 62	124 ± 25	4.83 ± 1.22

Emission Summary

H α broad SNR	3.88
H β broad SNR	0.97
H γ broad SNR	0.00
AGN frac	0.24
Host frac	0.76
$\log L_{5100, \text{Host}}$	43.25
Fe II/H β	—
Fe II/[O III]	0.49

Quality Flags

spurious_hab/hbb	0/0
15100	2
balmer	2
balmer_snr	2
hb_width	2
balmer_width	2