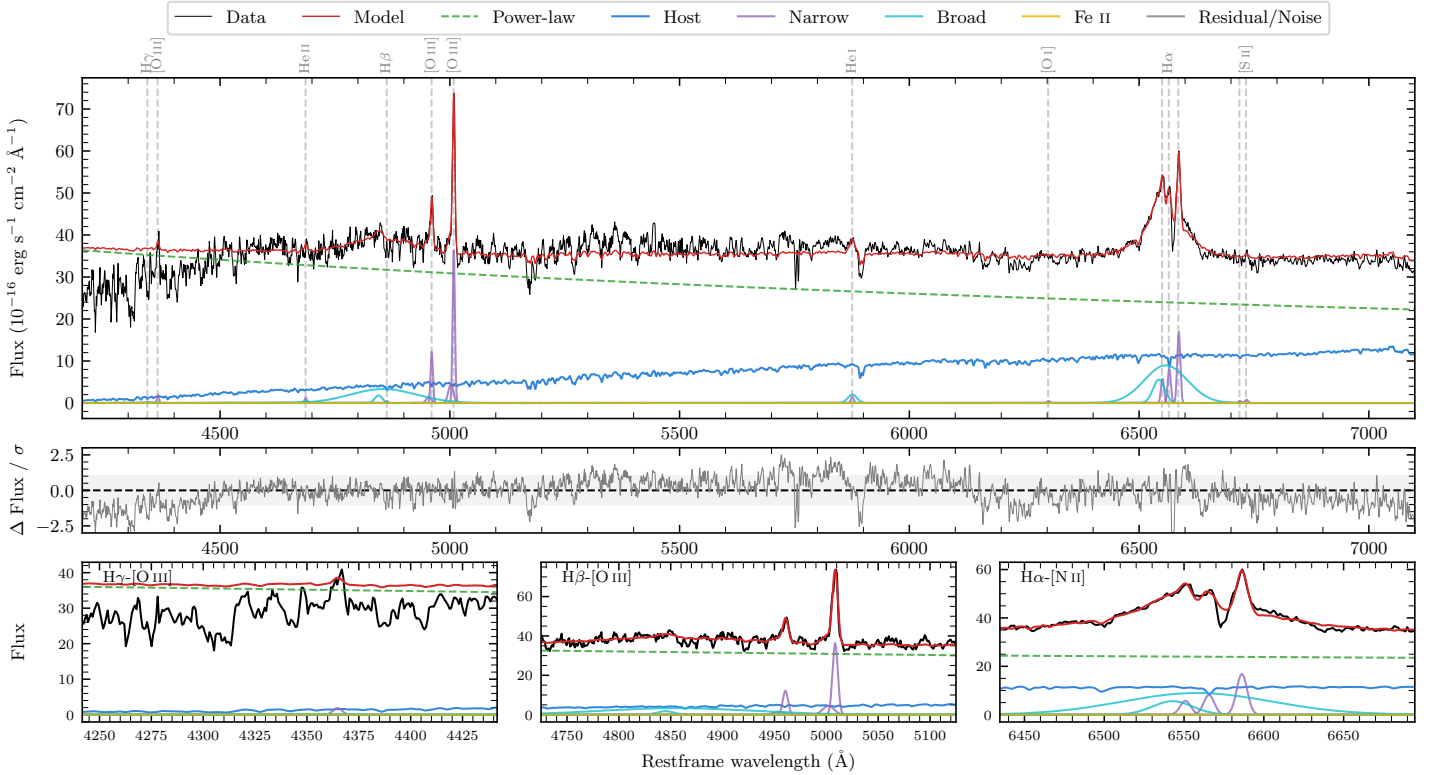
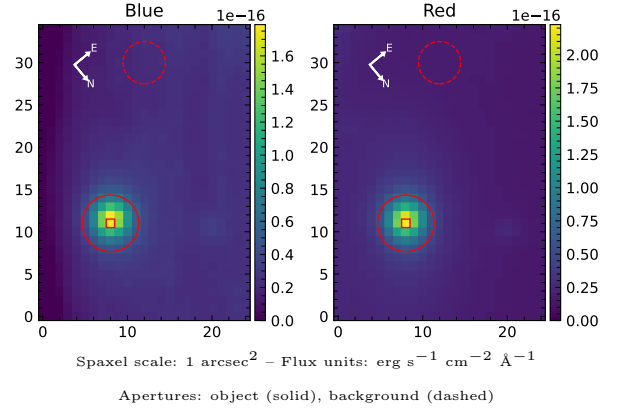


LEDA 3098145

Spectrum ID	307031075_sp2	Spectrum type	Sy 1.2
Alt name	g1514487-402153	Quality flag	good
z	0.0238	AGN reference	6dFGS
RA, Dec	228.7029, -40.3648	MW $E(B - V)$	0.094
MJD	59346.71	Power law α_ν	-1.07 ± 0.05
SNR/ \AA B/R	10.0/23.3	$\log L_{5100, \text{AGN}}$	43.30 ± 0.01
Obs airmass	1.27	$\log H\beta_{\text{Br}}/[\text{O III}]$	0.34 ± 0.07
SMSS ID	307031075	$\log M_{L5100}/M_\odot$	8.22 ± 0.33
Neighbour	13.8", 307031145	$\log M_{\text{H}\alpha}/M_\odot$	7.06 ± 0.07
SMSS $\langle r_6^{\text{ap}} \rangle$	14.88 ± 0.01	$\log M_{\text{H}\beta}/M_\odot$	7.97 ± 0.34
2MASS K_{ext}	10.83 ± 0.04	$\log M_{[\text{O III}]} / M_\odot$	7.93 ± 0.33



Emission Line Measurements

Line	$\log L$ (erg s $^{-1}$)	FWHM (km s $^{-1}$)	σ (km s $^{-1}$)	EW (Angstrom)
H γ Narrow	—	—	—	—
Hγ Broad	—	—	—	—
[O III] 4364	—	—	—	—
He II Narrow	—	—	—	—
He II Broad	—	—	—	—
H β Narrow	—	—	—	—
Hβ Broad	40.92 \pm 0.06	6456 \pm 2769	3652 \pm 75	20.43 \pm 1.45
[O III] 5007	40.58 \pm 0.03	374 \pm 63	255 \pm 31	9.61 \pm 0.38
He I Narrow	39.15 \pm 0.33	356 \pm 62	150 \pm 25	0.41 \pm 0.15
He I Broad	39.82 \pm 0.15	1178 \pm 62	500 \pm 25	1.91 \pm 0.29
[O I] 6300	—	—	—	—
H α Narrow	39.95 \pm 0.05	356 \pm 62	150 \pm 25	2.89 \pm 0.19
Hα Broad	41.21 \pm 0.01	3300 \pm 225	1677 \pm 25	52.49 \pm 0.71
[N II] 6585	40.27 \pm 0.02	356 \pm 62	150 \pm 25	6.01 \pm 0.19
[S II] 6718	—	—	—	—
[S II] 6732	38.94 \pm 0.41	356 \pm 62	150 \pm 25	0.29 \pm 0.19

Emission Summary

H α broad SNR	4.03
H β broad SNR	1.46
H γ broad SNR	0.00
AGN frac	0.87
Host frac	0.13
$\log L_{5100, \text{Host}}$	42.48
Fe II/H β	—
Fe II/[O III]	—

Quality Flags

spurious_hab/hbb	0/0
15100	0
balmer	1
balmer_snr	2
hb_width	1
balmer_width	1