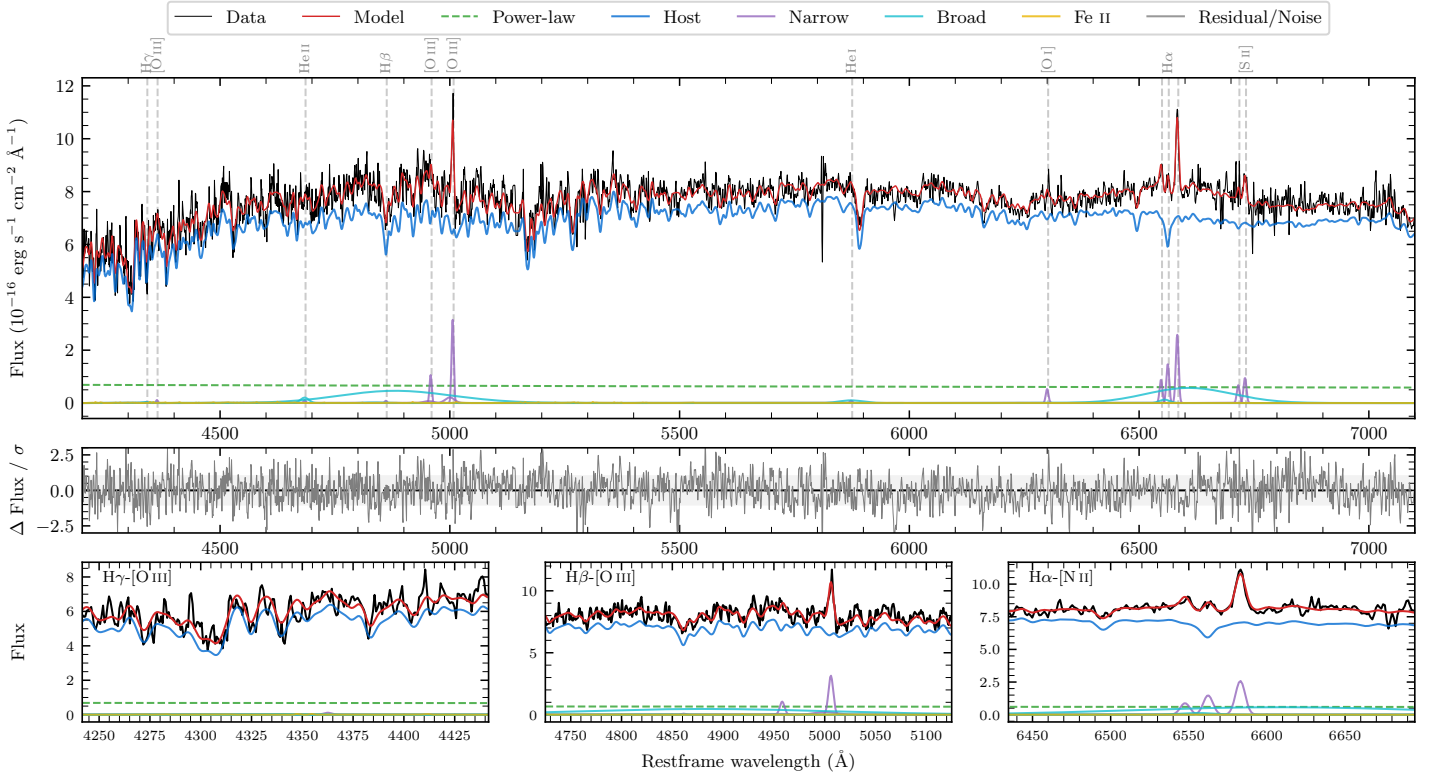
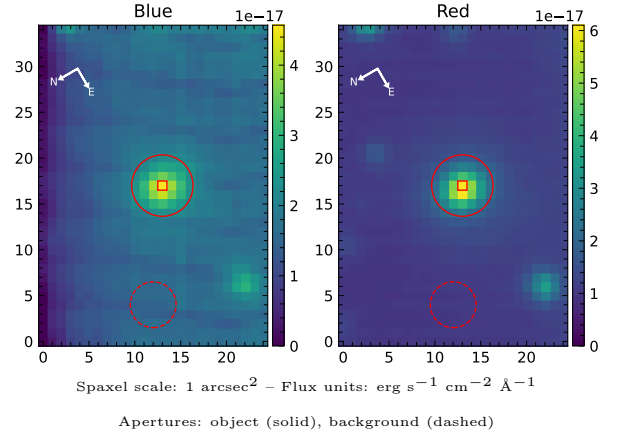


LEDA 595026

Spectrum ID	306475963_sp1	Spectrum type	Sy 1.5+
Alt name	g1439442-394242	Quality flag	good
z	0.0840	AGN reference	6dFGS
RA, Dec	219.9339, -39.7115	MW $E(B - V)$	0.081
MJD	60378.73	Power law α_ν	-1.69 ± 0.13
SNR/ \AA B/R	18.3/27.0	$\log L_{5100, \text{AGN}}$	42.77 ± 0.07
Obs airmass	1.01	$\log H\beta_{\text{Br}}/[\text{O III}]$	< 0.30
SMSS ID	306475963	$\log M_{L5100}/M_\odot$	—
Neighbour	9.8", 306475962	$\log M_{\text{H}\alpha}/M_\odot$	8.10 ± 0.07
SMSS $\langle r_6^{\text{ap}} \rangle$	16.59 ± 0.07	$\log M_{\text{H}\beta}/M_\odot$	—
2MASS K_{ext}	12.52 ± 0.10	$\log M_{[\text{O III}]} / M_\odot$	—



Emission Line Measurements

Line	$\log L$ (erg s ⁻¹)	FWHM (km s ⁻¹)	σ (km s ⁻¹)	EW (Å)
H γ Narrow	—	—	—	—
Hγ Broad	—	—	—	—
[O III] 4364	—	—	—	—
He II Narrow	—	—	—	—
He II Broad	—	—	—	—
H β Narrow	—	—	—	—
Hβ Broad	< 40.96	—	—	—
[O III] 5007	40.66 ± 0.06	344 ± 63	343 ± 84	39.63 ± 3.25
He I Narrow	—	—	—	—
He I Broad	40.09 ± 0.28	3004 ± 62	1276 ± 25	11.16 ± 3.97
[O I] 6300	39.87 ± 0.16	330 ± 62	140 ± 25	6.97 ± 1.35
H α Narrow	40.34 ± 0.05	330 ± 62	140 ± 25	20.61 ± 1.26
Hα Broad	41.42 ± 0.03	9399 ± 636	3565 ± 32	249.88 ± 8.92
[N II] 6585	40.58 ± 0.03	330 ± 62	140 ± 25	36.05 ± 1.37
[S II] 6718	40.01 ± 0.13	330 ± 62	140 ± 25	9.68 ± 1.89
[S II] 6732	40.16 ± 0.08	330 ± 62	140 ± 25	13.69 ± 1.67

Emission Summary

H α broad SNR	1.51
H β broad SNR	0.00
H γ broad SNR	0.00
AGN frac	0.09
Host frac	0.91
$\log L_{5100, \text{Host}}$	43.78
Fe II/H β	—
Fe II/[O III]	—

Quality Flags

spurious_hab/hbb	0/1
15100	2
balmer	2
balmer_snr	2
hb_width	2
balmer_width	2