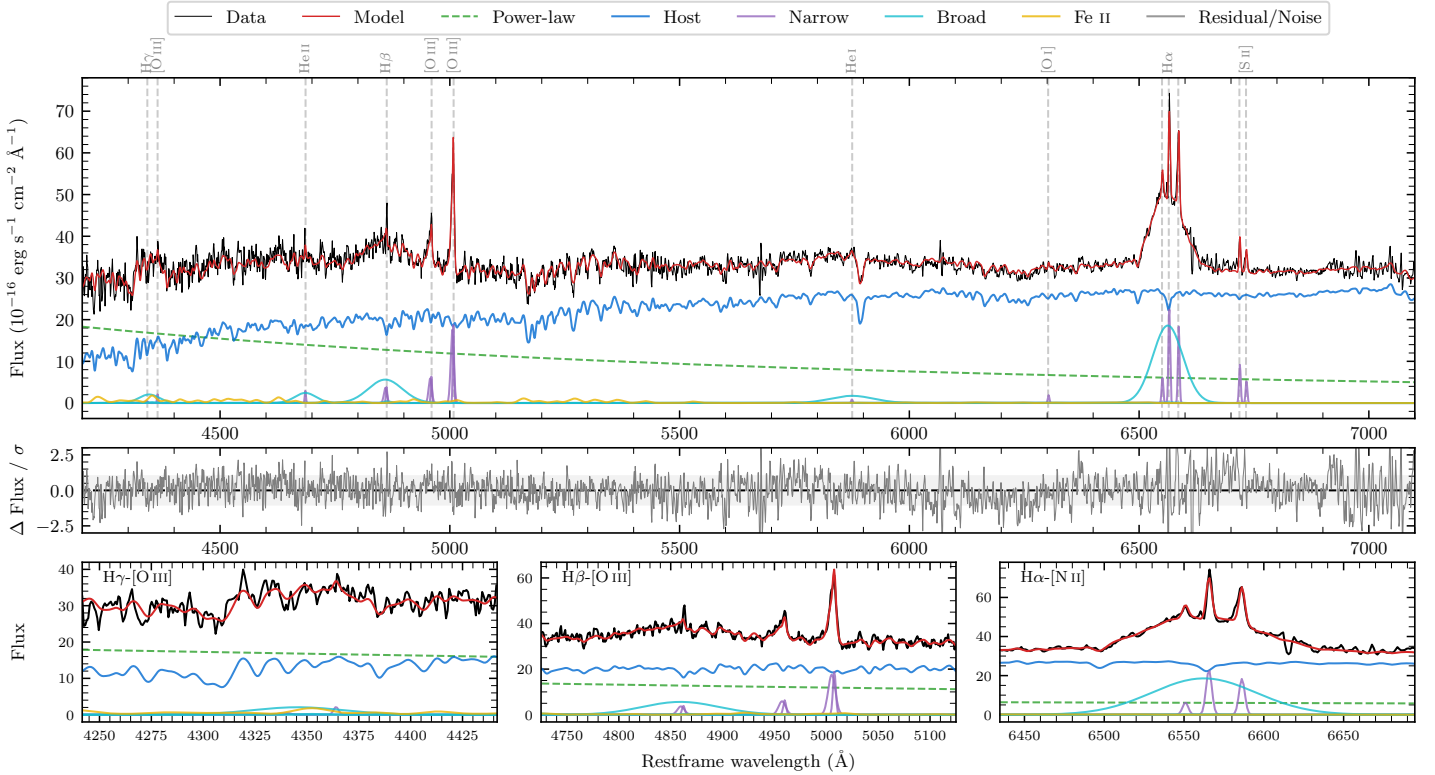
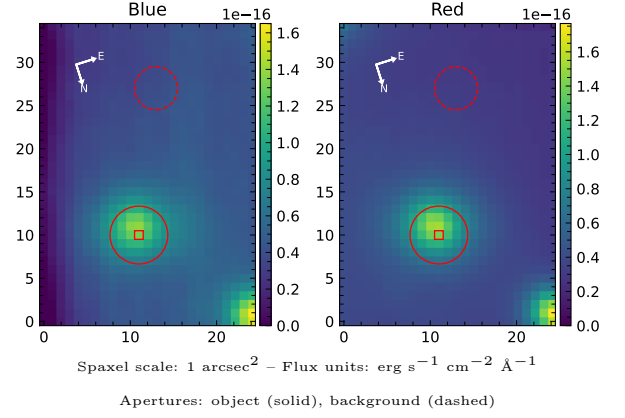


ESO 327-35

Spectrum ID	306422922_sp1	Spectrum type	Sy 1.2
Alt name	g1458047-390926	Quality flag	good
z	0.0380	AGN reference	6dFGS
RA, Dec	224.5196, -39.1572	MW $E(B-V)$	0.096
MJD	59351.64	Power law α_ν	0.47 ± 0.02
SNR/ \AA B/R	17.3/35.4	$\log L_{5100, \text{AGN}}$	43.29 ± 0.01
Obs airmass	1.11	$\log H\beta_{\text{Br}}/[\text{O III}]$	0.39 ± 0.03
SMSS ID	306422922	$\log M_{L5100}/M_\odot$	8.01 ± 0.04
Neighbour	14.4", 1371623043	$\log M_{H\alpha}/M_\odot$	7.43 ± 0.02
SMSS $\langle r_{6'' \text{ap}} \rangle$	15.75 ± 0.05	$\log M_{H\beta}/M_\odot$	7.92 ± 0.05
2MASS K_{ext}	11.25 ± 0.08	$\log M_{[\text{O III}]} / M_\odot$	7.87 ± 0.05



Emission Line Measurements

Line	$\log L$ (erg s ⁻¹)	FWHM (km s ⁻¹)	σ (km s ⁻¹)	EW (Å)
H γ Narrow	—	—	—	—
Hγ Broad	40.62 ± 0.14	3273 ± 281	1277 ± 32	7.21 ± 1.10
[O III] 4364	39.35 ± 0.37	196 ± 63	83 ± 25	0.40 ± 0.25
He II Narrow	39.52 ± 0.27	196 ± 63	83 ± 25	0.71 ± 0.25
He II Broad	40.69 ± 0.09	3460 ± 63	1469 ± 25	10.38 ± 1.07
H β Narrow	40.19 ± 0.12	349 ± 64	192 ± 25	3.58 ± 0.44
Hβ Broad	41.27 ± 0.03	5104 ± 238	1973 ± 27	43.06 ± 1.42
[O III] 5007	40.88 ± 0.02	349 ± 64	192 ± 25	19.10 ± 0.45
He I Narrow	39.10 ± 0.33	196 ± 63	83 ± 25	0.46 ± 0.24
He I Broad	40.85 ± 0.04	5623 ± 63	2388 ± 25	26.41 ± 1.37
[O I] 6300	39.46 ± 0.17	196 ± 63	83 ± 25	1.28 ± 0.28
H α Narrow	40.56 ± 0.02	196 ± 63	83 ± 25	17.85 ± 0.36
Hα Broad	41.73 ± 0.01	3498 ± 68	1302 ± 25	261.65 ± 1.50
[N II] 6585	40.47 ± 0.02	196 ± 63	83 ± 25	14.48 ± 0.41
[S II] 6718	40.17 ± 0.03	196 ± 63	83 ± 25	7.77 ± 0.35
[S II] 6732	39.94 ± 0.06	196 ± 63	83 ± 25	4.57 ± 0.35

Emission Summary

H α broad SNR	9.98
H β broad SNR	3.26
H γ broad SNR	1.31
AGN frac	0.37
Host frac	0.63
$\log L_{5100, \text{Host}}$	43.52
Fe II/H β	0.39
Fe II/[O III]	0.95

Quality Flags

spurious_hab/hbb	0/0
15100	2
balmer	0
balmer_snr	1
hb_width	0
balmer_width	0