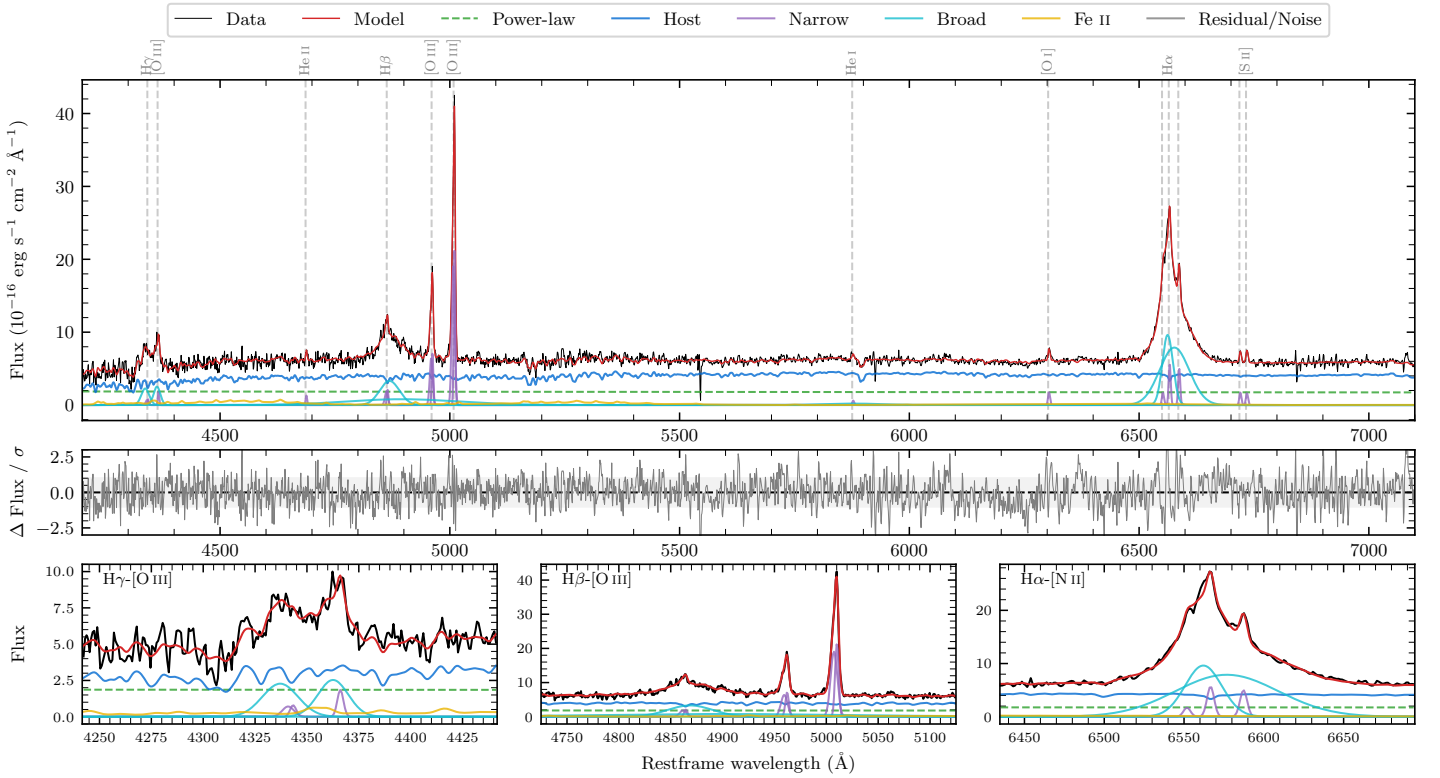
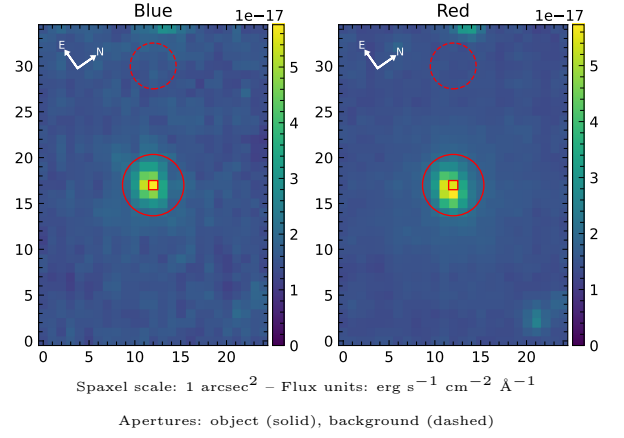


LEDA 613950

Spectrum ID	306261895_sp1	Spectrum type	Sy 1.5
Alt name	g1447187-380222	Quality flag	good
z	0.0636	AGN reference	6dFGS
RA, Dec	221.8280, -38.0393	MW $E(B - V)$	0.072
MJD	60081.51	Power law α_ν	-1.86 ± 0.12
SNR/ \AA B/R	11.3/19.3	$\log L_{5100, \text{AGN}}$	42.96 ± 0.07
Obs airmass	1.03	$\log H\beta_{\text{Br}}/[\text{O III}]$	-0.14 ± 0.20
SMSS ID	306261895	$\log M_{L5100}/M_\odot$	7.44 ± 0.04
Neighbour	None $< 15''$	$\log M_{\text{H}\alpha}/M_\odot$	7.05 ± 0.03
SMSS $\langle r_6''_{\text{ap}} \rangle$	16.82 ± 0.20	$\log M_{\text{H}\beta}/M_\odot$	7.48 ± 0.11
2MASS K_{ext}	12.56 ± 0.10	$\log M_{[\text{O III}]} / M_\odot$	7.69 ± 0.02



Emission Line Measurements

Line	$\log L$ (erg s ⁻¹)	FWHM (km s ⁻¹)	σ (km s ⁻¹)	EW (Å)
H γ Narrow	39.91 ± 0.18	386 ± 63	184 ± 25	4.52 ± 0.90
Hγ Broad	41.00 ± 0.03	—	997 ± 30	54.60 ± 1.89
[O III] 4364	39.86 ± 0.13	242 ± 63	102 ± 25	3.92 ± 0.65
He II Narrow	39.74 ± 0.14	242 ± 63	102 ± 25	3.01 ± 0.57
He II Broad	—	—	—	—
H β Narrow	40.38 ± 0.05	386 ± 63	184 ± 25	13.61 ± 0.82
Hβ Broad	$41.27^{+0.38}_{-0.02}$	3096 ± 77	1133 ± 34	103.35 ± 2.30
[O III] 5007	41.41 ± 0.01	386 ± 63	184 ± 25	142.90 ± 0.96
He I Narrow	39.51 ± 0.14	242 ± 63	102 ± 25	1.85 ± 0.42
He I Broad	40.54 ± 0.10	7813 ± 177	3318 ± 75	19.84 ± 2.52
[O I] 6300	40.01 ± 0.04	242 ± 63	102 ± 25	5.80 ± 0.39
H α Narrow	40.52 ± 0.03	242 ± 63	102 ± 25	19.23 ± 0.58
Hα Broad	41.98 ± 0.01	1900 ± 70	1008 ± 25	556.40 ± 1.89
[N II] 6585	40.47 ± 0.03	242 ± 63	102 ± 25	16.93 ± 0.51
[S II] 6718	40.01 ± 0.05	242 ± 63	102 ± 25	5.92 ± 0.42
[S II] 6732	40.00 ± 0.05	242 ± 63	102 ± 25	5.72 ± 0.41

Emission Summary

H α broad SNR	31.02
H β broad SNR	6.13
H γ broad SNR	4.83
AGN frac	0.32
Host frac	0.68
$\log L_{5100, \text{Host}}$	43.28
Fe II/H β	—
Fe II/[O III]	—

Quality Flags

spurious_hab/hbb	0/1
15100	1
balmer	0
balmer_snr	0
hb_width	0
balmer_width	0