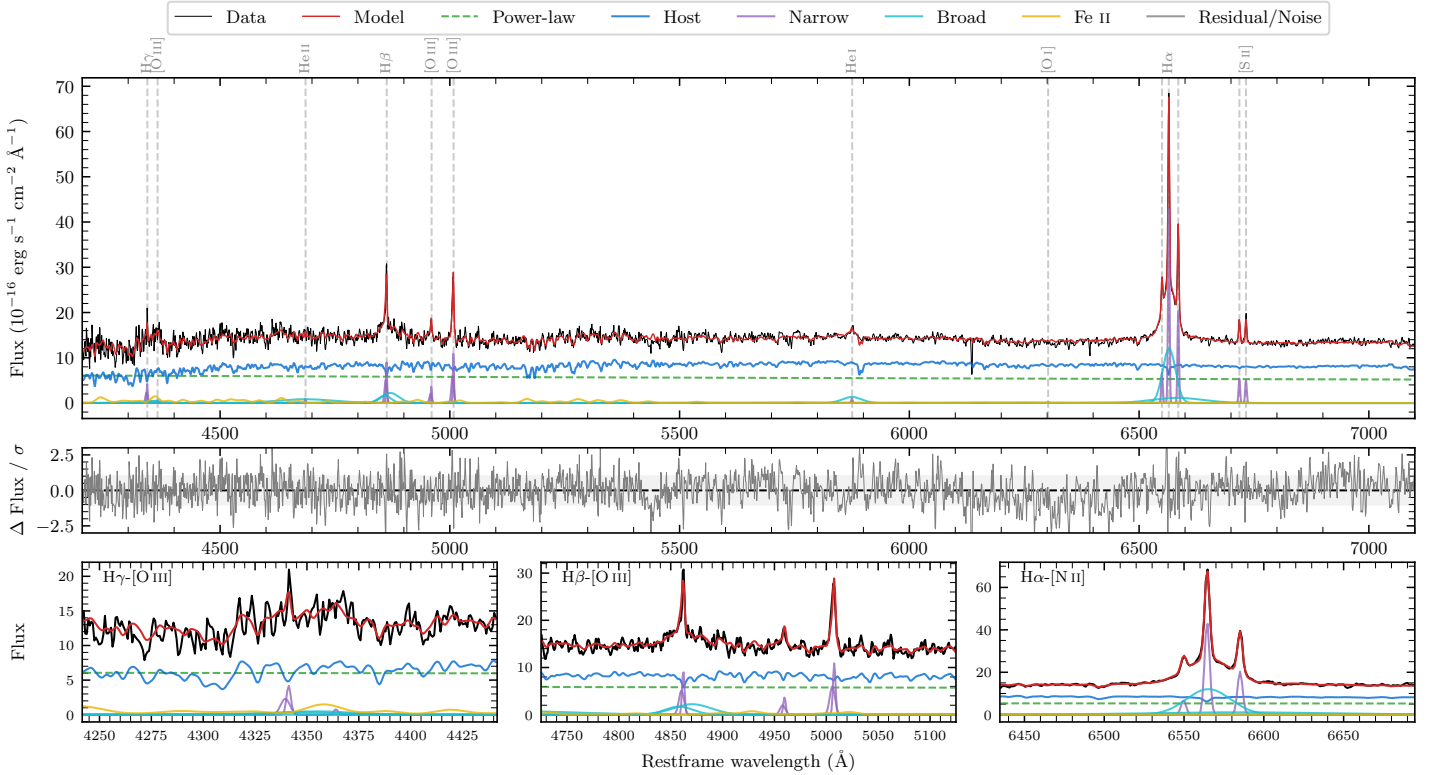
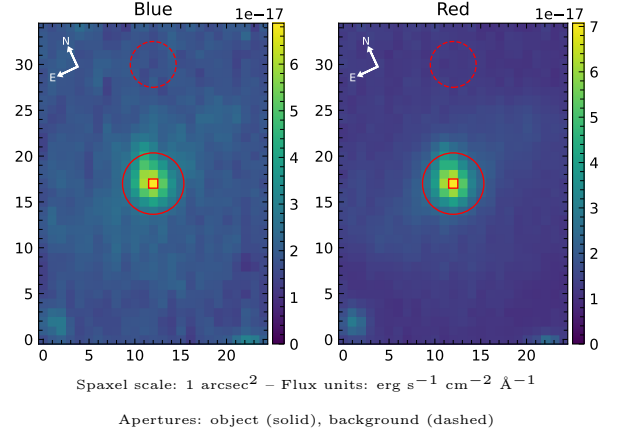


LEDA 613511

| | | | |
|--|--------------------|--|------------------|
| Spectrum ID | 30622993_sp1 | Spectrum type | Sy 1.2 |
| Alt name | g0701211-380415 | Quality flag | good |
| z | 0.0268 | AGN reference | 6dFGS |
| RA, Dec | 105.3379, -38.0709 | MW $E(B - V)$ | 0.181 |
| MJD | 60288.65 | Power law α_ν | -1.70 ± 0.05 |
| SNR/ \AA B/R | 14.5/27.7 | $\log L_{5100, \text{AGN}}$ | 42.69 ± 0.02 |
| Obs airmass | 1.01 | $\log H\beta_{\text{Br}}/[\text{O III}]$ | 0.36 ± 0.04 |
| SMSS ID | 30622993 | $\log M_{L5100}/M_\odot$ | 7.15 ± 0.05 |
| Neighbour | None $< 15''$ | $\log M_{\text{H}\alpha}/M_\odot$ | 6.29 ± 0.05 |
| SMSS $\langle r_6''_{\text{ap}} \rangle$ | 16.35 ± 0.07 | $\log M_{\text{H}\beta}/M_\odot$ | 6.94 ± 0.07 |
| 2MASS K_{ext} | 11.55 ± 0.09 | $\log M_{[\text{O III}]} / M_\odot$ | 6.88 ± 0.08 |



Emission Line Measurements

| Line | $\log L$ (erg s^{-1}) | FWHM (km s^{-1}) | σ (km s^{-1}) | EW (\AA) |
|-----------------------------------|------------------------------------|----------------------------------|---------------------------------|-------------------------------------|
| H γ Narrow | 39.61 ± 0.09 | 231 ± 64 | 134 ± 26 | 4.08 ± 0.53 |
| Hγ Broad | — | — | — | — |
| [O III] 4364 | 38.55 ± 0.43 | 174 ± 62 | 73 ± 25 | 0.35 ± 0.32 |
| He II Narrow | 38.70 ± 0.33 | 174 ± 62 | 73 ± 25 | 0.51 ± 0.28 |
| He II Broad | 40.35 ± 0.07 | 9262 ± 87 | 3933 ± 36 | 22.78 ± 2.11 |
| H β Narrow | 40.00 ± 0.03 | 231 ± 64 | 134 ± 26 | 10.42 ± 0.44 |
| Hβ Broad | 40.44 ± 0.03 | 2551 ± 129 | 946 ± 38 | 28.35 ± 1.09 |
| [O III] 5007 | 40.08 ± 0.02 | 231 ± 64 | 134 ± 26 | 12.72 ± 0.38 |
| He I Narrow | 38.80 ± 0.18 | 174 ± 62 | 73 ± 25 | 0.69 ± 0.17 |
| He I Broad | 40.08 ± 0.04 | 2494 ± 98 | 1059 ± 41 | 13.05 ± 0.74 |
| [O I] 6300 | — | — | — | — |
| H α Narrow | 40.47 ± 0.01 | 174 ± 62 | 73 ± 25 | 33.88 ± 0.24 |
| Hα Broad | 40.99 ± 0.01 | 1577 ± 66 | 803 ± 33 | 111.37 ± 1.13 |
| [N II] 6585 | 40.14 ± 0.01 | 174 ± 62 | 73 ± 25 | 15.82 ± 0.21 |
| [S II] 6718 | 39.58 ± 0.03 | 174 ± 62 | 73 ± 25 | 4.39 ± 0.19 |
| [S II] 6732 | 39.56 ± 0.04 | 174 ± 62 | 73 ± 25 | 4.15 ± 0.20 |

Emission Summary

| | |
|------------------------------|-------|
| H α broad SNR | 12.92 |
| H β broad SNR | 3.59 |
| H γ broad SNR | 0.94 |
| AGN frac | 0.44 |
| Host frac | 0.57 |
| $\log L_{5100, \text{Host}}$ | 42.80 |
| Fe II/H β | 1.07 |
| Fe II/[O III] | 2.40 |

Quality Flags

| | |
|------------------|-----|
| spurious_hab/hbb | 0/0 |
| 15100 | 1 |
| balmer | 0 |
| balmer_snr | 2 |
| hb_width | 0 |
| balmer_width | 0 |