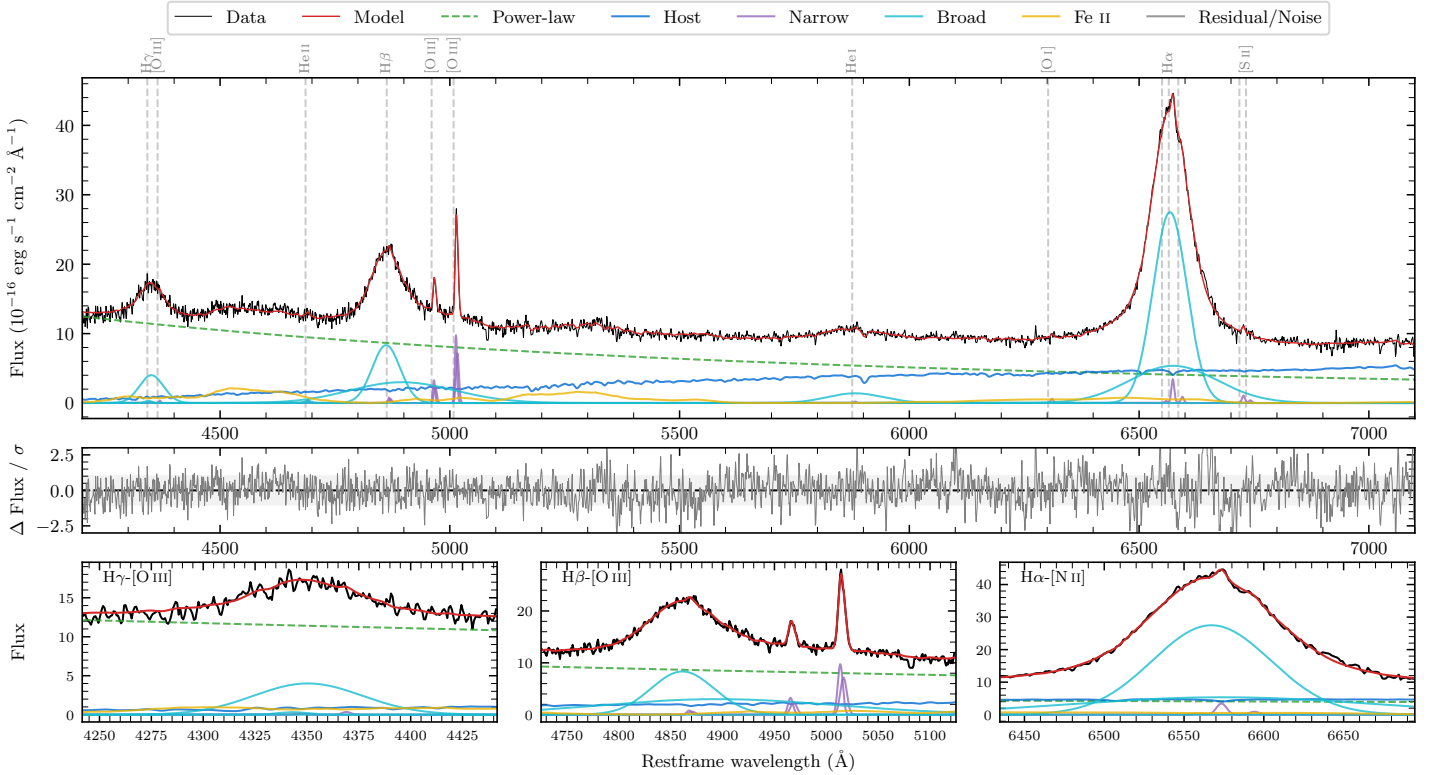
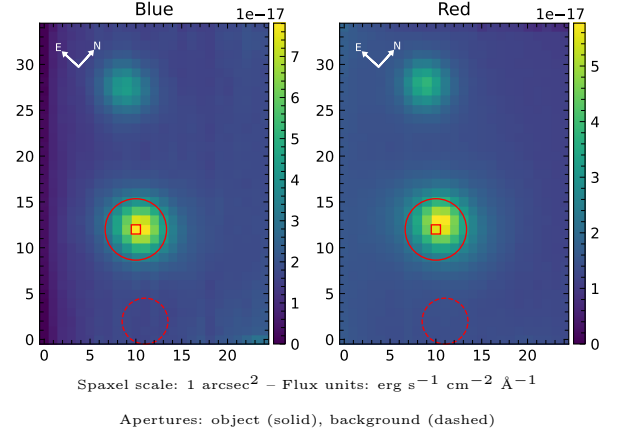


LEDA 1062999

Spectrum ID	303660265_sp2	Spectrum type	Sy 1.0
Alt name	4218657791715405952	Quality flag	good
z	0.0991	AGN reference	PGC
RA, Dec	308.5555, -4.0914	MW $E(B - V)$	0.061
MJD	59731.72	Power law α_ν	0.49 ± 0.01
SNR/ \AA B/R	20.3/27.7	$\log L_{5100, \text{AGN}}$	43.98 ± 0.01
Obs airmass	1.14	$\log H\beta_{\text{Br}}/[\text{O III}]$	1.11 ± 0.01
SMSS ID	303660265	$\log M_{L5100}/M_\odot$	8.37 ± 0.01
Neighbour	None $< 15''$	$\log M_{\text{H}\alpha}/M_\odot$	8.41 ± 0.04
SMSS $\langle r_6'' \text{ ap} \rangle$	15.90 ± 0.21	$\log M_{\text{H}\beta}/M_\odot$	8.57 ± 0.01
2MASS K_{ext}	12.03 ± 0.07	$\log M_{[\text{O III}]} / M_\odot$	8.22 ± 0.01



Emission Line Measurements

Line	$\log L$ (erg s ⁻¹)	FWHM (km s ⁻¹)	σ (km s ⁻¹)	EW (Å)
H γ Narrow	–	–	–	–
Hγ Broad	41.86 ± 0.02	4063 ± 178	1530 ± 26	25.94 ± 0.57
[O III] 4364	39.70 ± 0.44	344 ± 63	145 ± 25	0.18 ± 0.15
He II Narrow	39.82 ± 0.39	344 ± 63	145 ± 25	0.29 ± 0.17
He II Broad	40.24 ± 0.31	1178 ± 62	500 ± 25	0.75 ± 0.31
H β Narrow	40.39 ± 0.15	440 ± 64	190 ± 25	1.17 ± 0.22
Hβ Broad	42.60 ± 0.01	5436 ± 63	3846 ± 40	191.59 ± 1.39
[O III] 5007	41.49 ± 0.01	440 ± 64	190 ± 25	15.80 ± 0.27
He I Narrow	39.60 ± 0.36	344 ± 63	145 ± 25	0.30 ± 0.17
He I Broad	41.75 ± 0.02	7274 ± 63	3089 ± 25	43.45 ± 1.18
[O I] 6300	40.10 ± 0.13	344 ± 63	145 ± 25	1.14 ± 0.22
H α Narrow	40.87 ± 0.03	344 ± 63	145 ± 25	7.41 ± 0.32
Hα Broad	43.01 ± 0.01	4420 ± 63	2014 ± 25	1031.53 ± 1.83
[N II] 6585	40.29 ± 0.15	344 ± 63	145 ± 25	1.99 ± 0.35
[S II] 6718	40.37 ± 0.08	344 ± 63	145 ± 25	2.52 ± 0.29
[S II] 6732	39.95 ± 0.23	344 ± 63	145 ± 25	0.96 ± 0.28

Emission Summary

H α broad SNR	54.15
H β broad SNR	18.49
H γ broad SNR	7.10
AGN frac	0.76
Host frac	0.24
$\log L_{5100, \text{Host}}$	43.47
Fe II/H β	0.31
Fe II/[O III]	3.97

Quality Flags

spurious_hab/hbb	0/0
15100	2
balmer	0
balmer_snr	0
hb_width	1
balmer_width	0