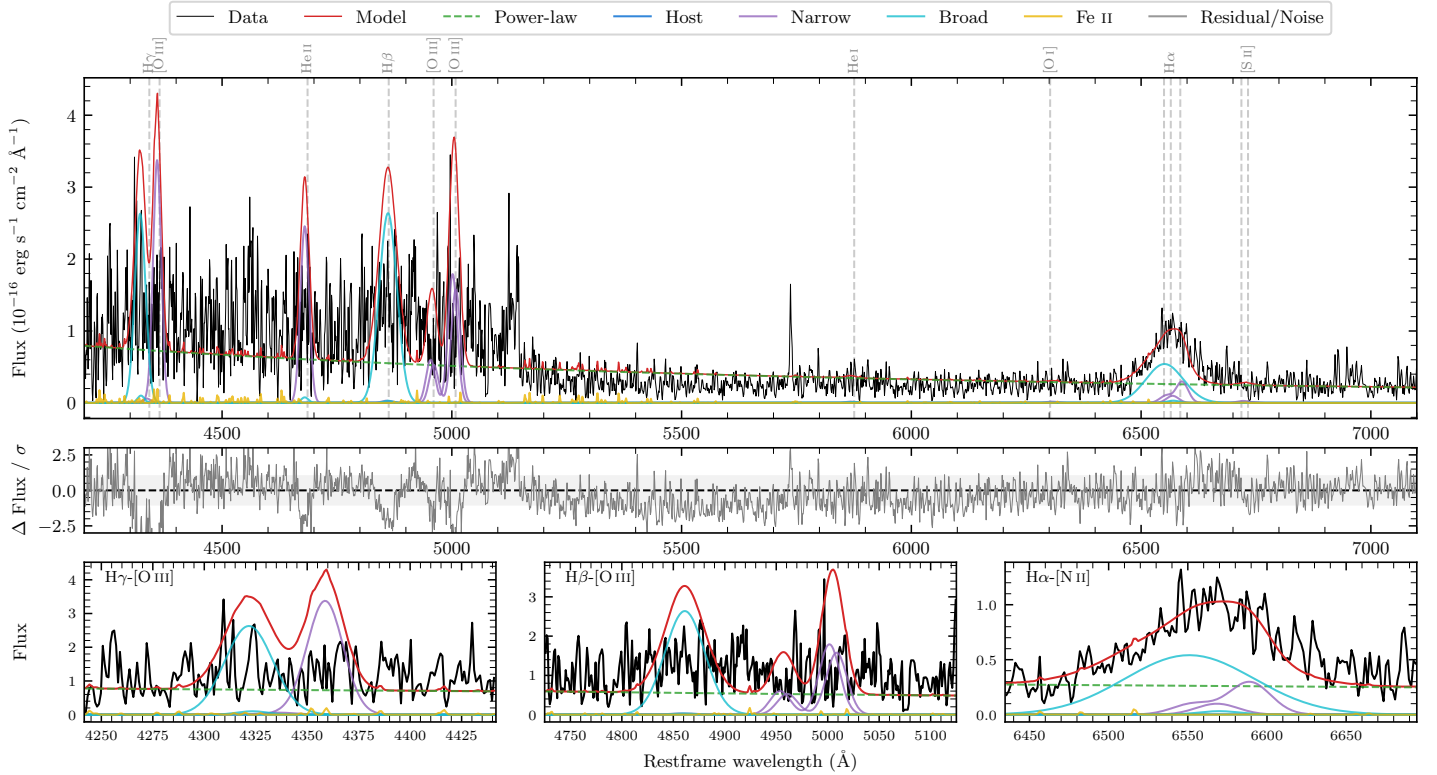
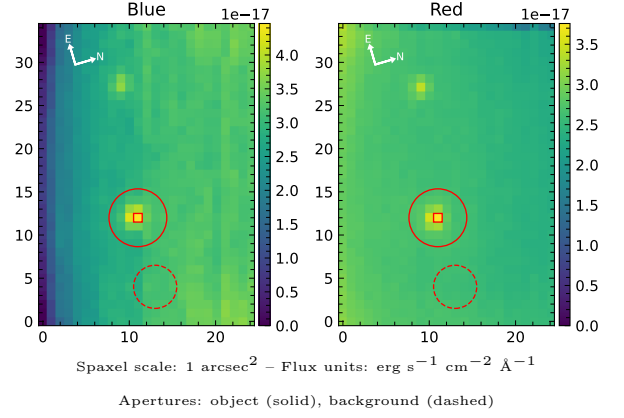


LEDA 1062999

Spectrum ID	303660265_sp1	Spectrum type	Bad
Alt name	4218657791715405952	Quality flag	bad_all
z	0.0991	AGN reference	PGC
RA, Dec	308.5555, -4.0914	MW $E(B - V)$	0.061
MJD	59725.78	Power law α_ν	0.49 ± 0.01
SNR/ \AA B/R	1.2/1.9	$\log L_{5100, \text{AGN}}$	42.78 ± 0.01
Obs airmass	1.13	$\log H\beta_{\text{Br}}/[\text{O III}]$	—
SMSS ID	303660265	$\log M_{L5100}/M_\odot$	—
Neighbour	None $< 15''$	$\log M_{\text{H}\alpha}/M_\odot$	—
SMSS $\langle r_6'' \text{ap} \rangle$	15.90 ± 0.21	$\log M_{\text{H}\beta}/M_\odot$	—
2MASS K_{ext}	12.03 ± 0.07	$\log M_{[\text{O III}]} / M_\odot$	—



Emission Line Measurements

Line	$\log L$ (erg s $^{-1}$)	FWHM (km s $^{-1}$)	σ (km s $^{-1}$)	EW (\AA)
H γ Narrow	—	—	—	—
Hγ Broad	—	—	—	—
[O III] 4364	41.29 ± 0.03	1414 ± 62	600 ± 25	111.69 ± 8.24
He II Narrow	41.19 ± 0.05	1414 ± 62	600 ± 25	104.42 ± 9.04
He II Broad	—	—	—	—
H β Narrow	—	—	—	—
Hβ Broad	—	—	—	—
[O III] 5007	41.35 ± 0.03	1505 ± 62	635 ± 25	181.18 ± 12.07
He I Narrow	—	—	—	—
He I Broad	—	—	—	—
[O I] 6300	—	—	—	—
H α Narrow	39.94 ± 0.34	1414 ± 62	600 ± 25	13.84 ± 3.71
Hα Broad	—	—	—	—
[N II] 6585	40.42 ± 0.10	1414 ± 62	600 ± 25	41.67 ± 4.02
[S II] 6718	39.40 ± 0.53	1414 ± 62	600 ± 25	4.22 ± 3.89
[S II] 6732	—	—	—	—

Emission Summary

H α broad SNR	0.93
H β broad SNR	0.00
H γ broad SNR	0.00
AGN frac	1.00
Host frac	0.00
$\log L_{5100, \text{Host}}$	39.89
Fe II/H β	—
Fe II/[O III]	—

Quality Flags

spurious_hab/hbb	0/0
15100	2
balmer	2
balmer_snr	2
hb_width	2
balmer_width	2