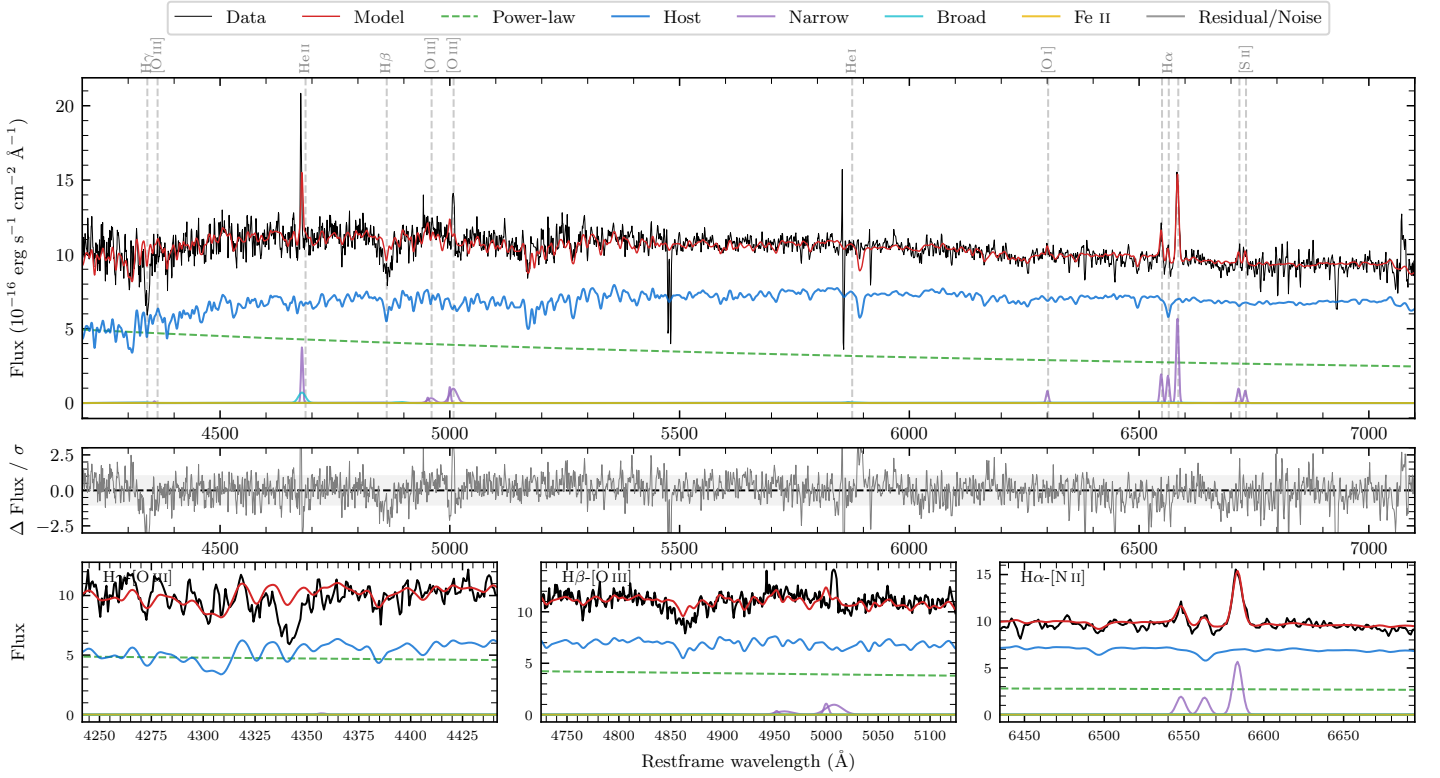
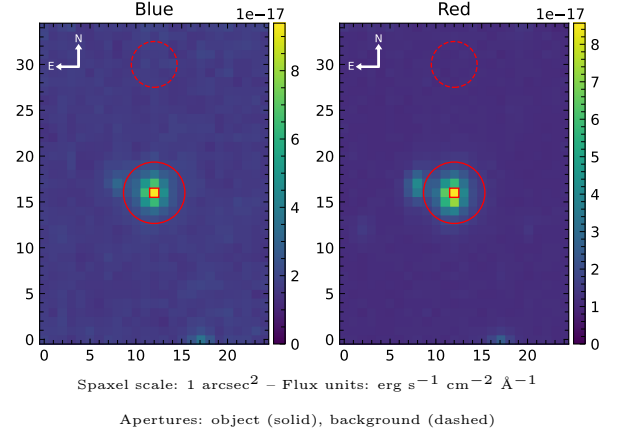


4189361819791896064

Spectrum ID	299187842_sp1	Spectrum type	SF
Alt name	4189361819791896064	Quality flag	good
z	0.0760	AGN reference	AllBRICS2
RA, Dec	299.6207, -11.5952	MW $E(B - V)$	0.151
MJD	60798.77	Power law α_ν	-0.67 ± 0.04
SNR/ \AA B/R	13.8/19.8	$\log L_{5100, \text{AGN}}$	43.44 ± 0.01
Obs airmass	1.08	$\log H\beta_{\text{Br}}/[\text{O III}]$	—
SMSS ID	299187842	$\log M_{L5100}/M_\odot$	—
Neighbour	3.7", 299187843	$\log M_{\text{H}\alpha}/M_\odot$	—
SMSS $\langle r_{6'' \text{ap}} \rangle$	16.46 ± 0.01	$\log M_{\text{H}\beta}/M_\odot$	—
2MASS K_{ext}	12.88 ± 0.12	$\log M_{[\text{O III}]} / M_\odot$	—



Emission Line Measurements

Line	$\log L$ (erg s ⁻¹)	FWHM (km s ⁻¹)	σ (km s ⁻¹)	EW (Å)
H γ Narrow	—	—	—	—
Hγ Broad	—	—	—	—
[O III] 4364	—	—	—	—
He II Narrow	40.47 ± 0.06	308 ± 62	130 ± 25	4.82 ± 0.41
He II Broad	40.33 ± 0.18	1188 ± 62	504 ± 25	3.50 ± 0.81
H β Narrow	—	—	—	—
Hβ Broad	—	—	—	—
[O III] 5007	40.59 ± 0.08	888 ± 80	473 ± 25	7.08 ± 0.91
He I Narrow	—	—	—	—
He I Broad	—	—	—	—
[O I] 6300	39.93 ± 0.12	308 ± 62	130 ± 25	2.08 ± 0.40
H α Narrow	40.31 ± 0.07	308 ± 62	130 ± 25	5.19 ± 0.47
Hα Broad	—	—	—	—
[N II] 6585	40.80 ± 0.02	308 ± 62	130 ± 25	16.10 ± 0.49
[S II] 6718	40.04 ± 0.12	308 ± 62	130 ± 25	2.92 ± 0.52
[S II] 6732	39.97 ± 0.20	308 ± 62	130 ± 25	2.47 ± 0.67

Emission Summary

H α broad SNR	0.00
H β broad SNR	0.00
H γ broad SNR	0.00
AGN frac	0.37
Host frac	0.63
$\log L_{5100, \text{Host}}$	43.68
Fe II/H β	—
Fe II/[O III]	—

Quality Flags

spurious_hab/hbb	0/0
15100	1
balmer	2
balmer_snr	2
hb_width	2
balmer_width	2