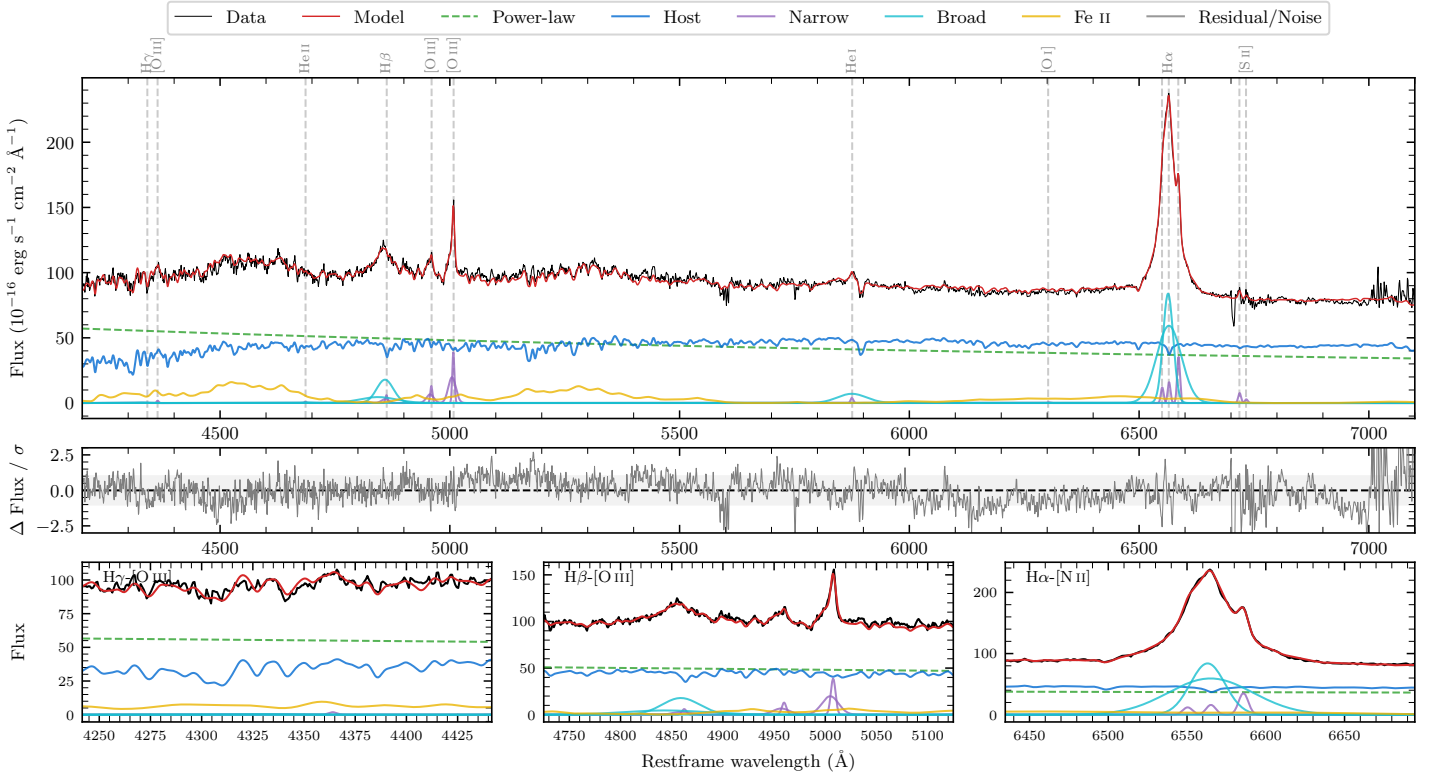
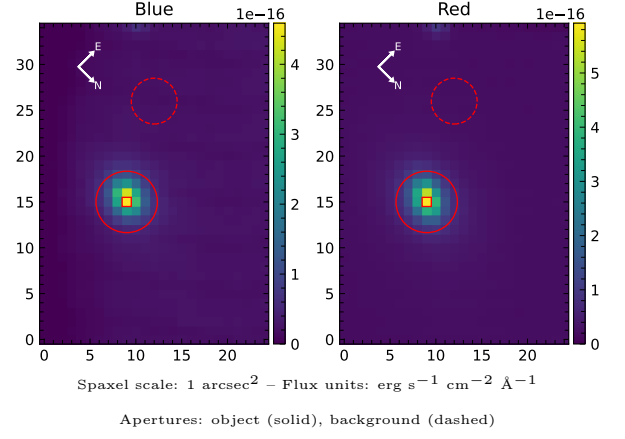


LEDA 90341

Spectrum ID	299047923_sp1	Spectrum type	Sy 1.2
Alt name	g1949093-103425	Quality flag	good
z	0.0239	AGN reference	6dFGS
RA, Dec	297.2886, -10.5737	MW $E(B - V)$	0.205
MJD	60410.79	Power law α_ν	-1.02 ± 0.03
SNR/ \AA B/R	29.7/38.4	$\log L_{5100, \text{AGN}}$	43.50 ± 0.01
Obs airmass	1.17	$\log H\beta_{\text{Br}}/[\text{O III}]$	0.31 ± 0.03
SMSS ID	299047923	$\log M_{L5100}/M_\odot$	7.64 ± 0.04
Neighbour	None $< 15''$	$\log M_{\text{H}\alpha}/M_\odot$	6.87 ± 0.04
SMSS $\langle r_6'' \text{ap} \rangle$	14.23 ± 0.04	$\log M_{\text{H}\beta}/M_\odot$	7.44 ± 0.05
2MASS K_{ext}	9.85 ± 0.03	$\log M_{[\text{O III}]} / M_\odot$	7.43 ± 0.05



Emission Line Measurements

Line	$\log L$ (erg s ⁻¹)	FWHM (km s ⁻¹)	σ (km s ⁻¹)	EW (Å)
H γ Narrow	–	–	–	–
Hγ Broad	–	–	–	–
[O III] 4364	39.10 ± 0.42	328 ± 63	139 ± 25	0.18 ± 0.15
He II Narrow	–	–	–	–
He II Broad	–	–	–	–
H β Narrow	40.11 ± 0.14	437 ± 66	408 ± 28	1.99 ± 0.28
Hβ Broad	41.23 ± 0.02	3005 ± 121	1293 ± 74	26.33 ± 0.63
[O III] 5007	40.93 ± 0.02	437 ± 66	408 ± 28	13.46 ± 0.29
He I Narrow	39.56 ± 0.16	328 ± 63	139 ± 25	0.68 ± 0.14
He I Broad	40.88 ± 0.03	3805 ± 68	1616 ± 27	14.02 ± 0.52
[O I] 6300	–	–	–	–
H α Narrow	40.21 ± 0.07	328 ± 63	139 ± 25	3.41 ± 0.21
Hα Broad	41.93 ± 0.01	1605 ± 65	793 ± 25	175.54 ± 0.53
[N II] 6585	40.56 ± 0.03	328 ± 63	139 ± 25	7.53 ± 0.20
[S II] 6718	39.90 ± 0.08	328 ± 63	139 ± 25	1.70 ± 0.19
[S II] 6732	39.47 ± 0.19	328 ± 63	139 ± 25	0.64 ± 0.17

Emission Summary

H α broad SNR	41.75
H β broad SNR	6.47
H γ broad SNR	0.00
AGN frac	0.53
Host frac	0.47
$\log L_{5100, \text{Host}}$	43.45
Fe II/H β	2.70
Fe II/[O III]	5.44

Quality Flags

spurious_hab/hbb	0/0
15100	0
balmer	0
balmer_snr	2
hb_width	0
balmer_width	1