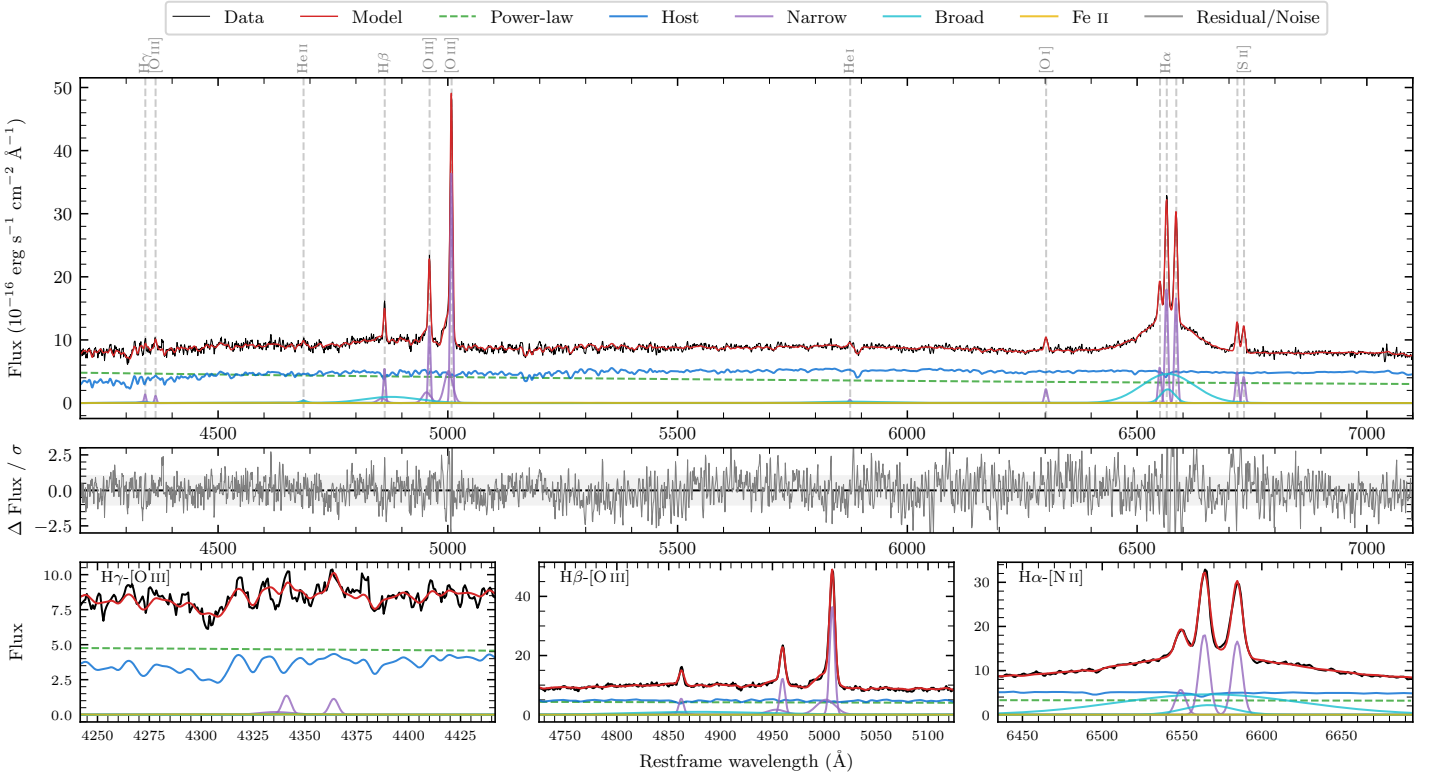
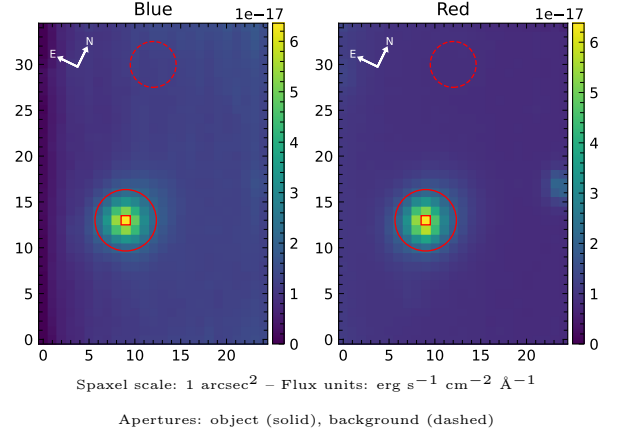


# NVSS J205558–152931

Spectrum ID	298390513_sp1	Spectrum type	Sy 1.5
Alt name	g2055580–152929	Quality flag	good
$z$	0.0799	AGN reference	6dFGS
RA, Dec	313.9914, –15.4915	MW $E(B - V)$	0.051
MJD	59079.5	Power law $\alpha_\nu$	$-1.11 \pm 0.13$
SNR/ $\text{\AA}$ B/R	18.6/32.7	$\log L_{5100, \text{AGN}}$	$43.51 \pm 0.02$
Obs airmass	1.08	$\log H\beta_{\text{Br}}/[\text{O III}]$	$-0.36 \pm 0.03$
SMSS ID	<a href="#">298390513</a>	$\log M_{L5100}/M_\odot$	$8.55 \pm 0.03$
Neighbour	None $< 15''$	$\log M_{\text{H}\alpha}/M_\odot$	$7.81 \pm 0.03$
SMSS $\langle r_6 \rangle_{\text{ap}}$	$16.34 \pm 0.03$	$\log M_{\text{H}\beta}/M_\odot$	$8.42 \pm 0.04$
2MASS $K_{\text{ext}}$	$12.71 \pm 0.12$	$\log M_{[\text{O III}]} / M_\odot$	$8.75 \pm 0.02$



## Emission Line Measurements

Line	$\log L$ (erg s <sup>-1</sup> )	FWHM (km s <sup>-1</sup> )	$\sigma$ (km s <sup>-1</sup> )	EW (Å)
H $\gamma$ Narrow	$40.27 \pm 0.12$	$375 \pm 63$	$376 \pm 26$	$2.55 \pm 0.54$
<b>H<math>\gamma</math> Broad</b>	–	–	–	–
[O III] 4364	$40.02 \pm 0.17$	$348 \pm 62$	$147 \pm 25$	$1.42 \pm 0.32$
He II Narrow	$39.67 \pm 0.32$	$348 \pm 62$	$147 \pm 25$	$0.68 \pm 0.27$
<b>He II Broad</b>	<b><math>40.12 \pm 0.24</math></b>	<b><math>1178 \pm 62</math></b>	<b><math>500 \pm 25</math></b>	<b><math>1.90 \pm 0.49</math></b>
H $\beta$ Narrow	$40.92 \pm 0.02$	$375 \pm 63$	$376 \pm 26$	$12.54 \pm 0.53$
<b>H<math>\beta</math> Broad</b>	<b><math>41.40 \pm 0.03</math></b>	<b><math>8511 \pm 213</math></b>	<b><math>3203 \pm 30</math></b>	<b><math>38.05 \pm 1.49</math></b>
[O III] 5007	$41.76 \pm 0.01$	$375 \pm 63$	$376 \pm 26$	$88.81 \pm 0.61$
He I Narrow	$39.83 \pm 0.13$	$348 \pm 62$	$147 \pm 25$	$1.20 \pm 0.19$
<b>He I Broad</b>	<b><math>40.78 \pm 0.07</math></b>	<b><math>7529 \pm 79</math></b>	<b><math>3197 \pm 32</math></b>	<b><math>10.73 \pm 0.94</math></b>
[O I] 6300	$40.47 \pm 0.03$	$348 \pm 62$	$147 \pm 25$	$5.54 \pm 0.22$
H $\alpha$ Narrow	$41.40 \pm 0.01$	$348 \pm 62$	$147 \pm 25$	$49.06 \pm 0.27$
<b>H<math>\alpha</math> Broad</b>	<b><math>42.11 \pm 0.01</math></b>	<b><math>4152 \pm 149</math></b>	<b><math>2061 \pm 25</math></b>	<b><math>249.55 \pm 1.11</math></b>
[N II] 6585	$41.36 \pm 0.01$	$348 \pm 62$	$147 \pm 25$	$44.99 \pm 0.26$
[S II] 6718	$40.84 \pm 0.01$	$348 \pm 62$	$147 \pm 25$	$13.74 \pm 0.29$
[S II] 6732	$40.77 \pm 0.02$	$348 \pm 62$	$147 \pm 25$	$11.79 \pm 0.31$

## Emission Summary

H $\alpha$ broad SNR	14.68
H $\beta$ broad SNR	2.22
H $\gamma$ broad SNR	0.00
AGN frac	0.47
Host frac	0.53
$\log L_{5100, \text{Host}}$	43.57
Fe II/H $\beta$	–
Fe II/[O III]	–

## Quality Flags

spurious_hab/hbb	0/0
15100	1
balmer	1
balmer_snr	2
hb_width	0
balmer_width	1