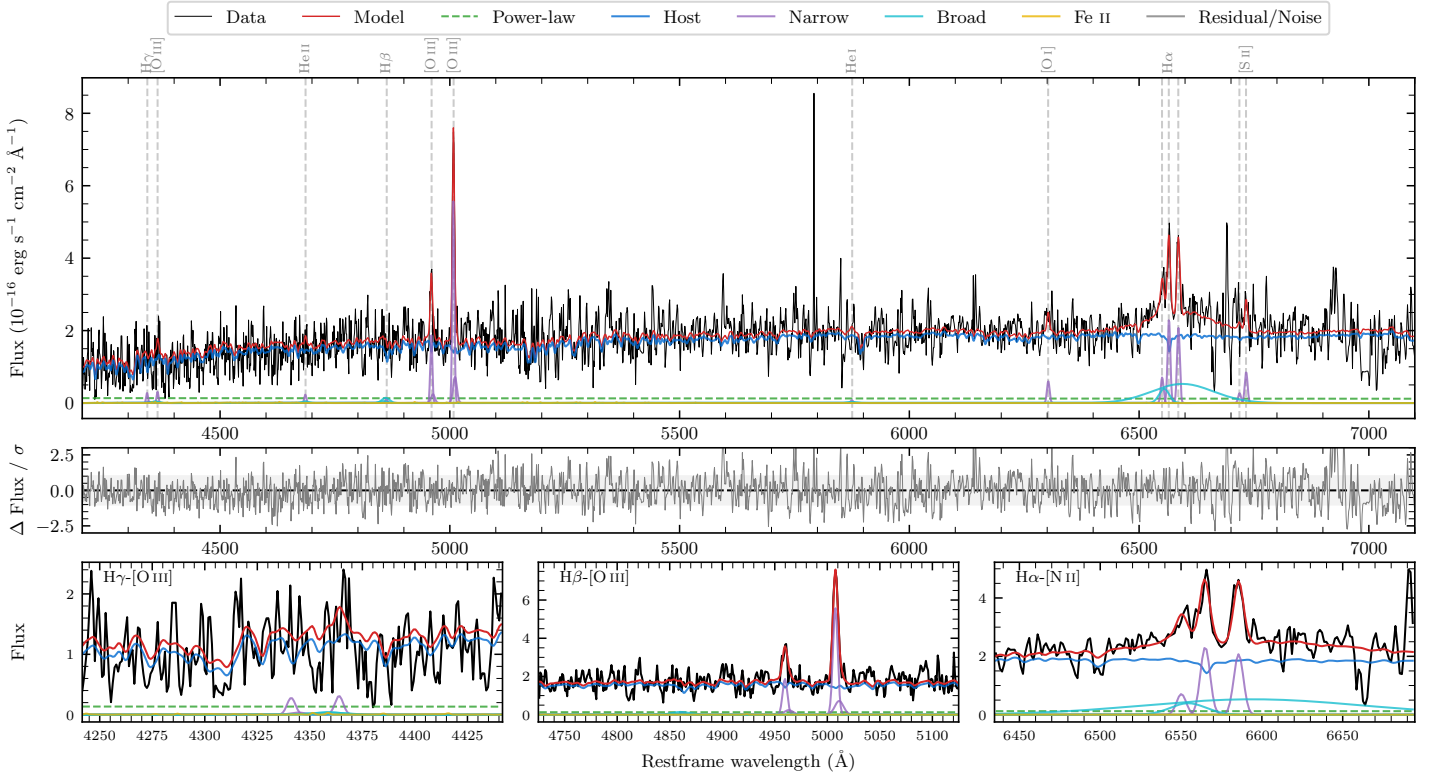
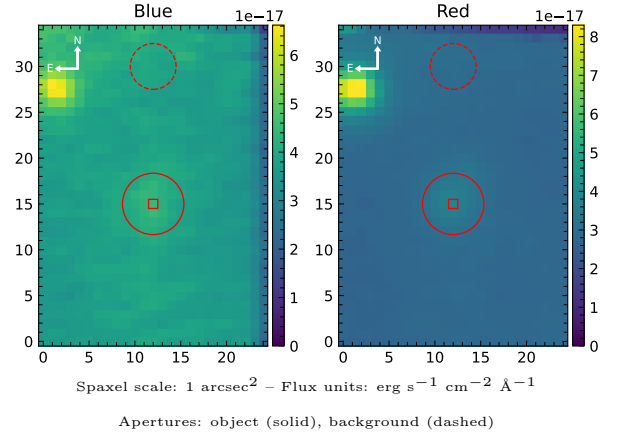


6dFGS gJ205139.5–175306

Spectrum ID	298260629_sp2	Spectrum type	Sy 1.5+
Alt name	g2051395–175306	Quality flag	good
z	0.0876	AGN reference	6dFGS
RA, Dec	312.9146, –17.8849	MW $E(B - V)$	0.052
MJD	61128.76	Power law α_ν	-1.75 ± 0.11
SNR/ \AA B/R	3.1/5.0	$\log L_{5100, \text{AGN}}$	42.10 ± 0.40
Obs airmass	1.98	$\log H\beta_{\text{Br}}/[\text{O III}]$	< -0.14
SMSS ID	298260629	$\log M_{L5100}/M_\odot$	–
Neighbour	None $< 15''$	$\log M_{\text{H}\alpha}/M_\odot$	7.46 ± 0.24
SMSS $\langle r_6''_{\text{ap}} \rangle$	17.91 ± 0.13	$\log M_{\text{H}\beta}/M_\odot$	–
2MASS K_{ext}	nan \pm nan	$\log M_{[\text{O III}]} / M_\odot$	–



Emission Line Measurements

Line	$\log L$ (erg s ⁻¹)	FWHM (km s ⁻¹)	σ (km s ⁻¹)	EW (Å)
H γ Narrow	39.55 ± 0.41	340 ± 63	183 ± 28	13.78 ± 13.43
Hγ Broad	–	–	–	–
[O III] 4364	39.51 ± 0.37	321 ± 62	136 ± 25	12.52 ± 9.42
He II Narrow	39.41 ± 0.43	321 ± 62	136 ± 25	10.19 ± 8.94
He II Broad	–	–	–	–
H β Narrow	–	–	–	–
Hβ Broad	< 40.77	–	–	–
[O III] 5007	40.91 ± 0.02	340 ± 63	183 ± 28	328.92 ± 12.33
He I Narrow	–	–	–	–
He I Broad	–	–	–	–
[O I] 6300	39.95 ± 0.16	321 ± 62	136 ± 25	38.30 ± 10.10
H α Narrow	40.56 ± 0.04	321 ± 62	136 ± 25	155.52 ± 9.13
Hα Broad	41.32 ± 0.05	4857 ± 1365	2458 ± 49	896.44 ± 52.13
[N II] 6585	40.51 ± 0.05	321 ± 62	136 ± 25	139.54 ± 10.35
[S II] 6718	39.64 ± 0.35	321 ± 62	136 ± 25	18.83 ± 14.24
[S II] 6732	40.14 ± 0.11	321 ± 62	136 ± 25	59.50 ± 13.02

Emission Summary

H α broad SNR	1.59
H β broad SNR	0.46
H γ broad SNR	0.00
AGN frac	0.08
Host frac	0.92
$\log L_{5100, \text{Host}}$	43.16
Fe II/H β	–
Fe II/[O III]	–

Quality Flags

spurious_hab/hbb	0/0
15100	2
balmer	2
balmer_snr	2
hb_width	2
balmer_width	2