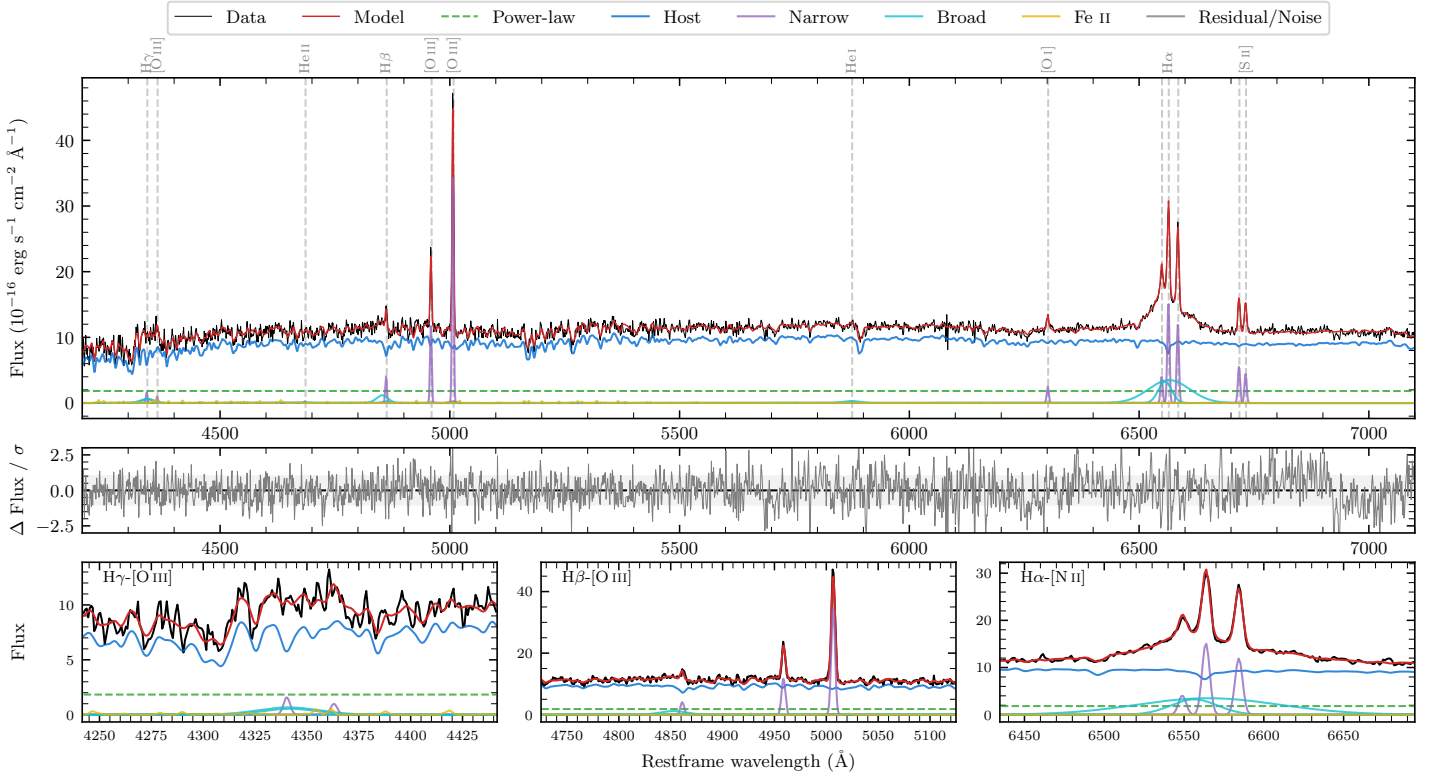
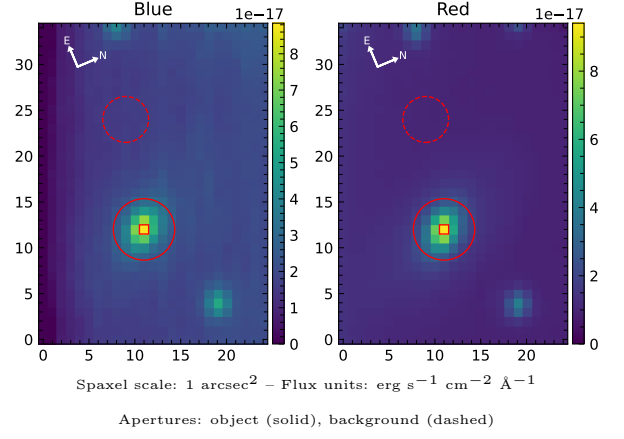


LEDA 840430

Spectrum ID	298010857_sp1	Spectrum type	Sy 1.8
Alt name	g2038102-203149	Quality flag	good
z	0.0359	AGN reference	6dFGS
RA, Dec	309.5423, -20.5303	MW $E(B - V)$	0.038
MJD	59732.74	Power law α_ν	-1.99 ± 0.01
SNR/ \AA B/R	14.9/32.1	$\log L_{5100, \text{AGN}}$	42.45 ± 0.05
Obs airmass	1.02	$\log H\beta_{\text{Br}}/[\text{O III}]$	-0.58 ± 0.07
SMSS ID	298010857	$\log M_{L5100}/M_\odot$	6.76 ± 0.05
Neighbour	11.5", 298010856	$\log M_{H\alpha}/M_\odot$	6.86 ± 0.05
SMSS $\langle r_6''_{\text{ap}} \rangle$	16.25 ± 0.06	$\log M_{H\beta}/M_\odot$	6.52 ± 0.08
2MASS K_{ext}	12.23 ± 0.09	$\log M_{[\text{O III}]} / M_\odot$	6.90 ± 0.05



Emission Line Measurements

Line	$\log L$ (erg s ⁻¹)	FWHM (km s ⁻¹)	σ (km s ⁻¹)	EW (Å)
H γ Narrow	39.32 ± 0.24	263 ± 63	134 ± 31	3.69 ± 1.82
Hγ Broad	40.15 ± 0.10	2249 ± 126	844 ± 43	23.76 ± 3.08
[O III] 4364	39.10 ± 0.29	259 ± 62	109 ± 25	2.25 ± 0.96
He II Narrow	–	–	–	–
He II Broad	–	–	–	–
H β Narrow	39.77 ± 0.07	263 ± 63	134 ± 31	10.60 ± 1.40
Hβ Broad	40.14 ± 0.07	1831 ± 61	617 ± 25	23.77 ± 2.07
[O III] 5007	40.72 ± 0.01	263 ± 63	134 ± 31	93.43 ± 1.48
He I Narrow	–	–	–	–
He I Broad	39.67 ± 0.13	2286 ± 63	971 ± 25	8.45 ± 1.39
[O I] 6300	39.66 ± 0.04	259 ± 62	109 ± 25	8.24 ± 0.46
H α Narrow	40.46 ± 0.01	259 ± 62	109 ± 25	51.54 ± 0.50
Hα Broad	41.21 ± 0.01	2614 ± 99	1463 ± 25	289.02 ± 2.09
[N II] 6585	40.35 ± 0.01	259 ± 62	109 ± 25	40.68 ± 0.50
[S II] 6718	40.03 ± 0.02	259 ± 62	109 ± 25	19.25 ± 0.49
[S II] 6732	39.94 ± 0.02	259 ± 62	109 ± 25	15.60 ± 0.47

Emission Summary

H α broad SNR	9.39
H β broad SNR	1.99
H γ broad SNR	1.81
AGN frac	0.17
Host frac	0.83
$\log L_{5100, \text{Host}}$	43.13
Fe II/H β	0.53
Fe II/[O III]	0.13

Quality Flags

spurious_hab/hbb	0/0
15100	2
balmer	1
balmer_snr	2
hb_width	0
balmer_width	2