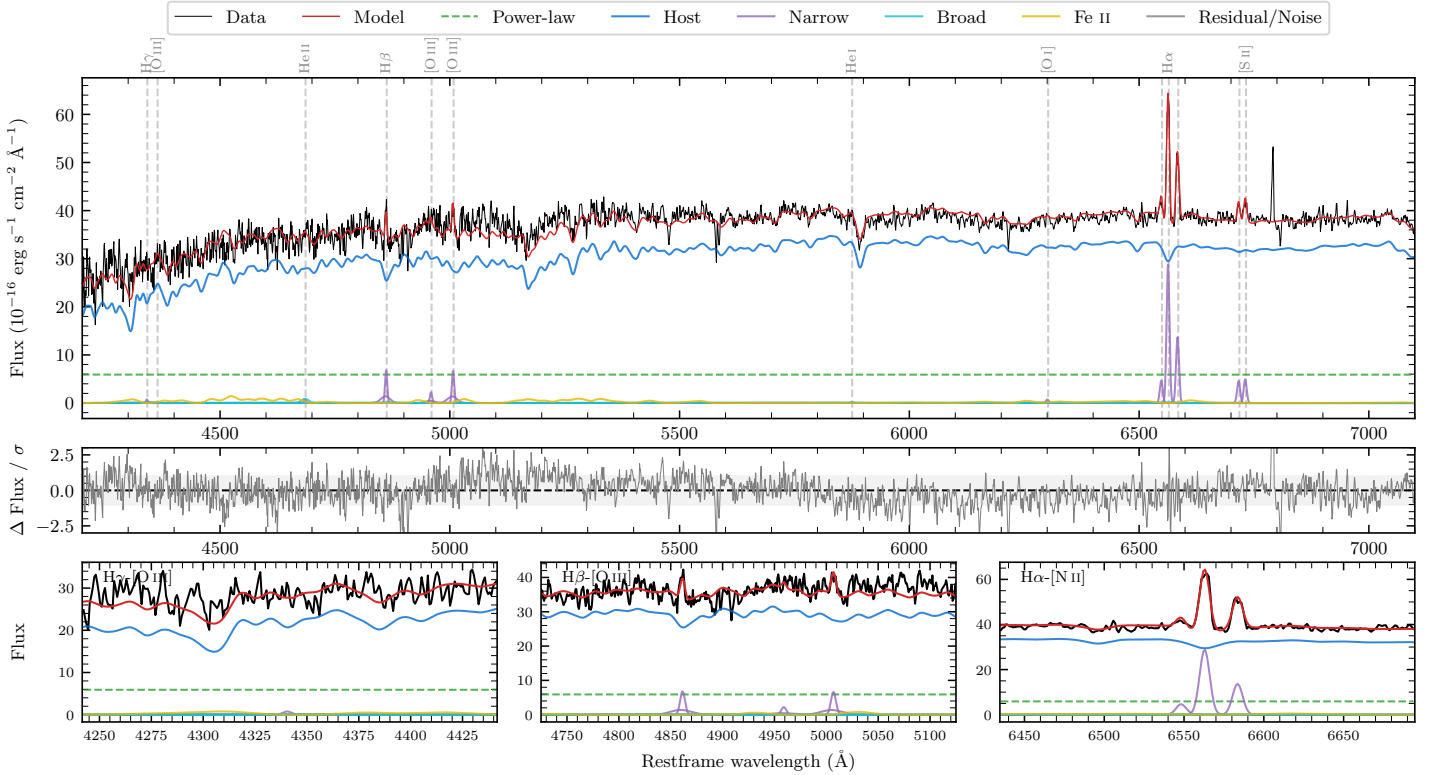
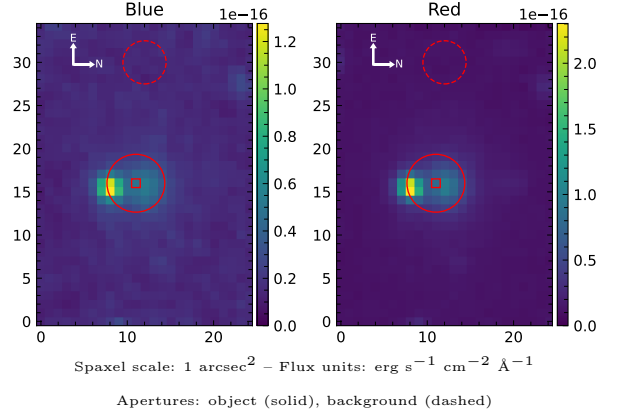


LEDA 204653

Spectrum ID	293538346_sp1	Spectrum type	Sy 2
Alt name	6dF J193950.2-033252	Quality flag	good
z	0.0557	AGN reference	6dFGS
RA, Dec	294.9589, -3.5476	MW $E(B - V)$	0.276
MJD	60905.45	Power law α_ν	-2.00 ± 0.01
SNR/ \AA B/R	16.0/29.4	$\log L_{5100, \text{AGN}}$	43.35 ± 0.03
Obs airmass	1.18	$\log H\beta_{\text{Br}}/[\text{O III}]$	—
SMSS ID	293538346	$\log M_{L5100}/M_\odot$	—
Neighbour	1.4", 2408048502	$\log M_{\text{H}\alpha}/M_\odot$	—
SMSS $\langle r_{6''}^{\text{ap}} \rangle$	15.51 ± 0.04	$\log M_{\text{H}\beta}/M_\odot$	—
2MASS K_{ext}	10.92 ± 0.04	$\log M_{[\text{O III}]} / M_\odot$	—



Emission Line Measurements

Line	$\log L$ (erg s $^{-1}$)	FWHM (km s $^{-1}$)	σ (km s $^{-1}$)	EW (A)
H γ Narrow	—	—	—	—
Hγ Broad	—	—	—	—
[O III] 4364	—	—	—	—
He II Narrow	—	—	—	—
He II Broad	40.14 ± 0.31	1179 ± 62	500 ± 25	3.10 ± 1.65
H β Narrow	40.76 ± 0.09	386 ± 66	426 ± 51	13.25 ± 1.75
Hβ Broad	—	—	—	—
[O III] 5007	40.77 ± 0.09	386 ± 66	426 ± 51	13.34 ± 1.75
He I Narrow	—	—	—	—
He I Broad	—	—	—	—
[O I] 6300	39.65 ± 0.31	339 ± 62	143 ± 25	1.01 ± 0.55
H α Narrow	41.26 ± 0.01	339 ± 62	143 ± 25	40.86 ± 0.70
Hα Broad	—	—	—	—
[N II] 6585	40.93 ± 0.02	339 ± 62	143 ± 25	19.37 ± 0.66
[S II] 6718	40.47 ± 0.06	339 ± 62	143 ± 25	6.67 ± 0.62
[S II] 6732	40.50 ± 0.05	339 ± 62	143 ± 25	7.13 ± 0.62

Emission Summary

H α broad SNR	0.00
H β broad SNR	0.00
H γ broad SNR	0.00
AGN frac	0.17
Host frac	0.83
$\log L_{5100, \text{Host}}$	44.04
Fe II/H β	—
Fe II/[O III]	2.64

Quality Flags

spurious_hab/hbb	0/0
15100	2
balmer	2
balmer_snr	2
hb_width	2
balmer_width	2