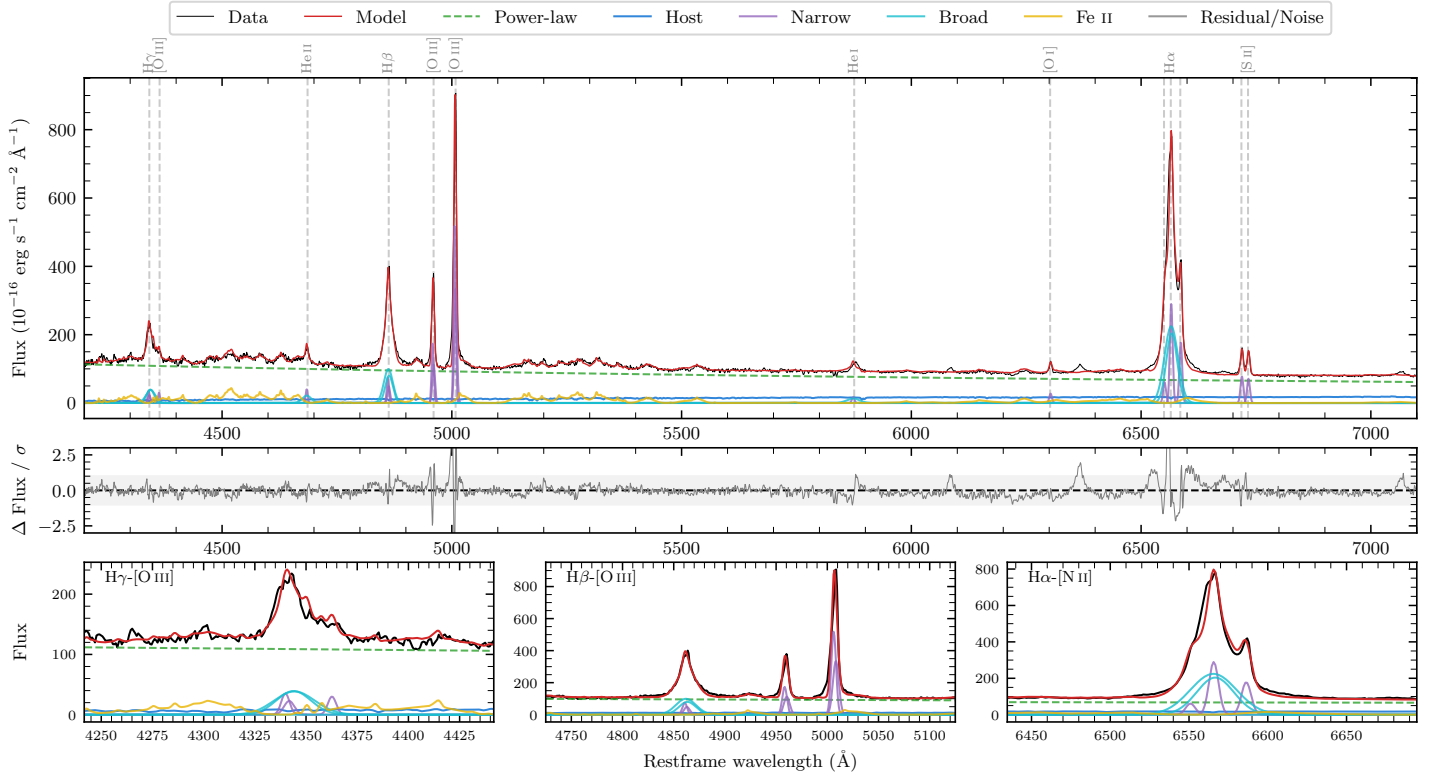
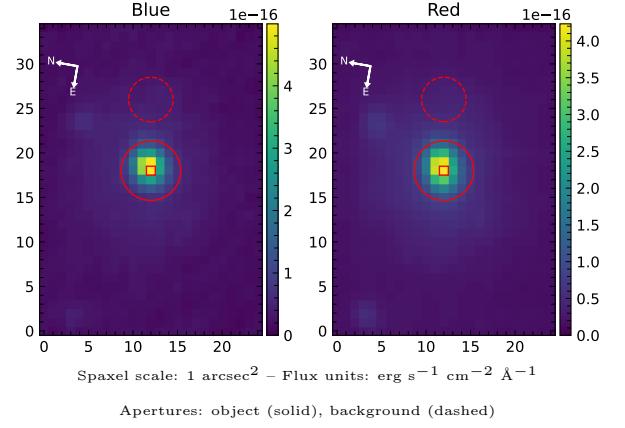


LEDA 90334

Spectrum ID	293179461_sp1	Spectrum type	Sy 1.5
Alt name	g1937330-061305	Quality flag	good
z	0.0104	AGN reference	6dFGS
RA, Dec	294.3877, -6.2179	MW $E(B - V)$	0.249
MJD	60082.7	Power law α_ν	-0.84 ± 0.23
SNR/ \AA B/R	5.8/7.6	$\log L_{5100, \text{AGN}}$	43.04 ± 0.03
Obs airmass	1.15	$\log H\beta_{\text{Br}}/[\text{O III}]$	-0.10 ± 0.05
SMSS ID	293179461	$\log M_{L5100}/M_\odot$	6.76 ± 0.09
Neighbour	None $< 15''$	$\log M_{\text{H}\alpha}/M_\odot$	6.56 ± 0.07
SMSS $\langle r_6''_{\text{ap}} \rangle$	14.27 ± 0.02	$\log M_{\text{H}\beta}/M_\odot$	6.66 ± 0.10
2MASS K_{ext}	9.67 ± 0.03	$\log M_{[\text{O III}]} / M_\odot$	6.84 ± 0.09



Emission Line Measurements

Line	$\log L$ (erg s^{-1})	FWHM (km s^{-1})	σ (km s^{-1})	EW (\AA)
H γ Narrow	39.90 ± 0.23	454 ± 70	183 ± 27	2.99 ± 0.71
Hγ Broad	40.65 ± 0.09	1445 ± 112	535 ± 44	16.62 ± 1.27
[O III] 4364	39.48 ± 0.34	331 ± 145	139 ± 62	1.43 ± 0.53
He II Narrow	39.67 ± 0.32	331 ± 145	139 ± 62	2.23 ± 0.45
He II Broad	40.11 ± 0.17	1506 ± 233	640 ± 99	5.52 ± 0.96
H β Narrow	40.30 ± 0.18	454 ± 70	183 ± 27	8.14 ± 0.64
Hβ Broad	41.02 ± 0.03	1363 ± 130	492 ± 53	43.63 ± 1.06
[O III] 5007	41.12 ± 0.04	454 ± 70	183 ± 27	59.87 ± 0.71
He I Narrow	39.34 ± 0.37	331 ± 145	139 ± 62	1.51 ± 0.41
He I Broad	40.07 ± 0.14	1672 ± 127	710 ± 53	6.12 ± 1.15
[O I] 6300	39.61 ± 0.19	331 ± 145	139 ± 62	2.90 ± 0.45
H α Narrow	40.69 ± 0.27	331 ± 145	139 ± 62	33.25 ± 0.91
Hα Broad	41.56 ± 0.04	1446 ± 98	485 ± 25	214.81 ± 1.41
[N II] 6585	40.48 ± 0.25	331 ± 145	139 ± 62	20.67 ± 0.69
[S II] 6718	40.15 ± 0.15	331 ± 145	139 ± 62	9.44 ± 0.52
[S II] 6732	40.11 ± 0.18	331 ± 145	139 ± 62	8.63 ± 0.51

Emission Summary

H α broad SNR	22.15
H β broad SNR	8.77
H γ broad SNR	3.94
AGN frac	0.89
Host frac	0.11
$\log L_{5100, \text{Host}}$	42.14
Fe II/H β	1.34
Fe II/[O III]	1.01

Quality Flags

spurious_hab/hbb	0/0
15100	0
balmer	0
balmer_snr	0
hb_width	0
balmer_width	1