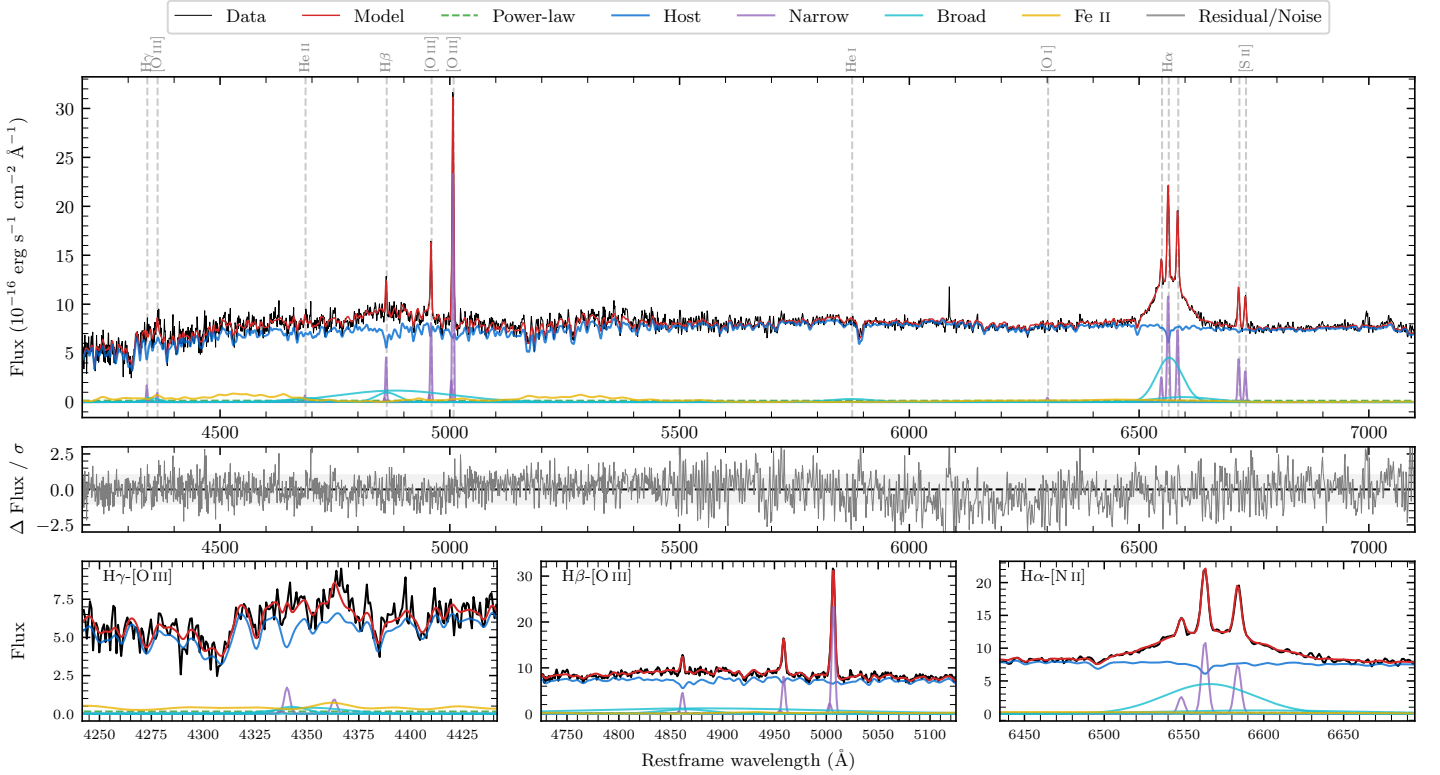
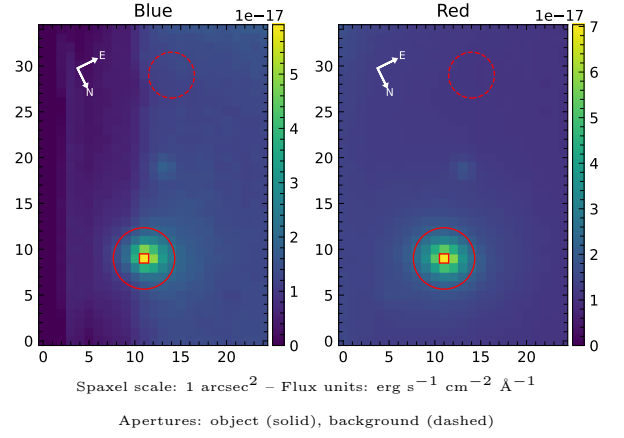


LEDA 587336

Spectrum ID	29060593_sp1	Spectrum type	Sy 1.5
Alt name	g0645395-402129	Quality flag	good
z	0.0349	AGN reference	6dFGS
RA, Dec	101.4144, -40.3579	MW $E(B-V)$	0.088
MJD	59668.45	Power law α_ν	-1.85 ± 0.16
SNR/ \AA B/R	12.4/29.1	$\log L_{5100, \text{AGN}}$	41.32 ± 0.60
Obs airmass	1.17	$\log H\beta_{\text{Br}}/[\text{O III}]$	-0.24 ± 0.46
SMSS ID	29060593	$\log M_{L5100}/M_\odot$	6.85 ± 0.26
Neighbour	7.0", 2055355083	$\log M_{H\alpha}/M_\odot$	6.95 ± 0.04
SMSS $\langle r_{6'' \text{ap}} \rangle$	16.47 ± 0.07	$\log M_{H\beta}/M_\odot$	7.14 ± 0.23
2MASS K_{ext}	12.53 ± 0.14	$\log M_{[\text{O III}]} / M_\odot$	7.36 ± 0.05



Emission Line Measurements

Line	$\log L$ (erg s ⁻¹)	FWHM (km s ⁻¹)	σ (km s ⁻¹)	EW (Å)
H γ Narrow	39.28 ± 0.19	236 ± 63	110 ± 25	45.65 ± 11.57
Hγ Broad	39.90 ± 0.14	1774 ± 555	786 ± 88	176.87 ± 37.20
[O III] 4364	38.98 ± 0.30	226 ± 62	94 ± 25	23.13 ± 10.04
He II Narrow	38.88 ± 0.30	226 ± 62	94 ± 25	18.36 ± 8.55
He II Broad	—	—	—	—
H β Narrow	39.75 ± 0.05	236 ± 63	110 ± 25	138.47 ± 8.78
Hβ Broad	$40.24^{+0.85}_{-0.07}$	3553 ± 27	1315 ± 25	431.80 ± 33.29
[O III] 5007	40.49 ± 0.01	236 ± 63	110 ± 25	756.37 ± 9.22
He I Narrow	—	—	—	—
He I Broad	40.03 ± 0.06	5585 ± 64	2372 ± 26	272.77 ± 21.29
[O I] 6300	38.84 ± 0.18	226 ± 62	94 ± 25	17.52 ± 4.13
H α Narrow	40.23 ± 0.01	226 ± 62	94 ± 25	431.81 ± 4.72
Hα Broad	41.07 ± 0.01	3194 ± 68	1335 ± 41	3045.17 ± 25.28
[N II] 6585	40.06 ± 0.01	226 ± 62	94 ± 25	293.63 ± 4.71
[S II] 6718	39.84 ± 0.02	226 ± 62	94 ± 25	180.11 ± 5.07
[S II] 6732	39.70 ± 0.03	226 ± 62	94 ± 25	130.10 ± 4.53

Emission Summary

H α broad SNR	8.27
H β broad SNR	1.60
H γ broad SNR	1.46
AGN frac	0.02
Host frac	0.98
$\log L_{5100, \text{Host}}$	43.00
Fe II/H β	—
Fe II/[O III]	—

Quality Flags

spurious_hab/hbb	0/2
15100	2
balmer	1
balmer_snr	2
hb_width	0
balmer_width	0