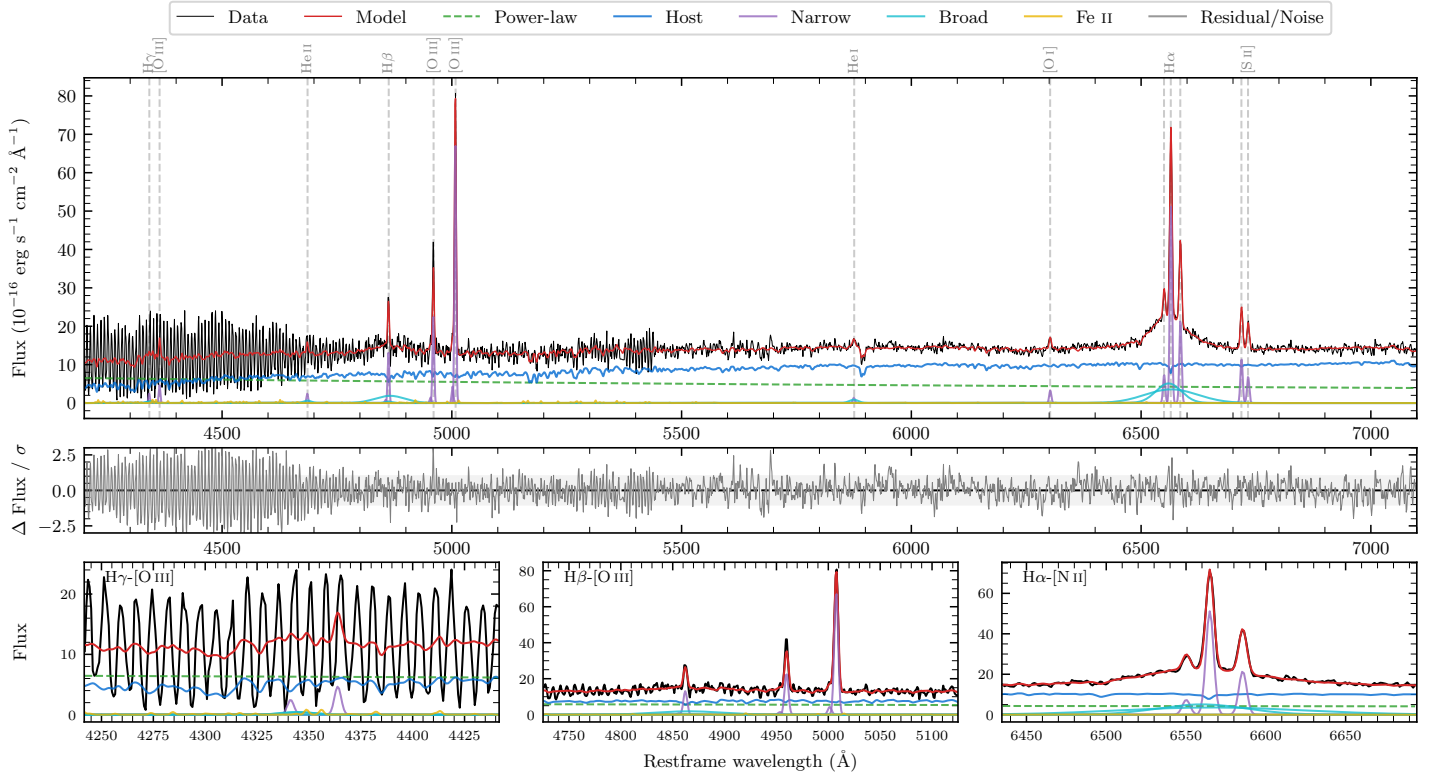
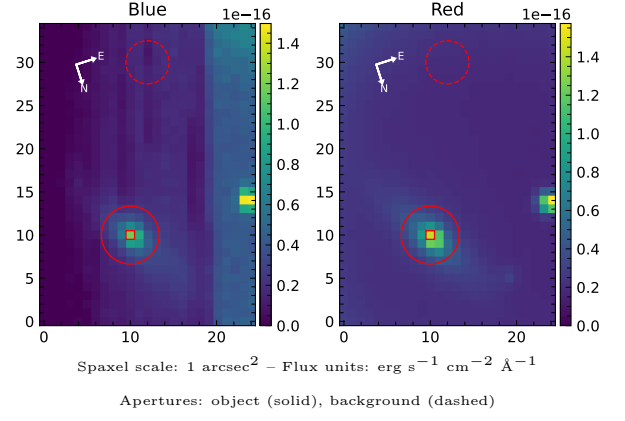


6dFGS gJ062658.6–370559

Spectrum ID	28975155_sp1	Spectrum type	Sy 1.5+
Alt name	g0626586–370559	Quality flag	good
z	0.0384	AGN reference	6dFGS
RA, Dec	96.7443, –37.0995	MW $E(B - V)$	0.072
MJD	59995.52	Power law α_ν	-1.03 ± 0.36
SNR/Å B/R	5.5/12.2	$\log L_{5100, \text{AGN}}$	42.98 ± 0.05
Obs airmass	1.09	$\log H\beta_{\text{Br}}/[\text{O III}]$	< -0.23
SMSS ID	28975155	$\log M_{L5100}/M_\odot$	–
Neighbour	13.9", 28975156	$\log M_{\text{H}\alpha}/M_\odot$	7.36 ± 0.04
SMSS $\langle r_6''_{\text{ap}} \rangle$	16.50 ± 0.07	$\log M_{\text{H}\beta}/M_\odot$	–
2MASS K_{ext}	nan \pm nan	$\log M_{[\text{O III}]} / M_\odot$	–



Emission Line Measurements

Line	$\log L$ (erg s ⁻¹)	FWHM (km s ⁻¹)	σ (km s ⁻¹)	EW (Å)
H γ Narrow	39.58 ± 0.38	268 ± 63	143 ± 27	1.76 ± 1.20
Hγ Broad	–	–	–	–
[O III] 4364	39.83 ± 0.23	266 ± 63	112 ± 25	3.15 ± 1.12
He II Narrow	39.58 ± 0.32	266 ± 63	112 ± 25	1.88 ± 0.89
He II Broad	39.70 ± 0.44	1267 ± 64	538 ± 26	2.45 ± 1.91
H β Narrow	40.35 ± 0.06	268 ± 63	143 ± 27	11.60 ± 1.04
Hβ Broad	< 40.85	–	–	–
[O III] 5007	41.09 ± 0.01	268 ± 63	143 ± 27	64.16 ± 1.07
He I Narrow	39.43 ± 0.28	266 ± 63	112 ± 25	1.66 ± 0.61
He I Broad	39.89 ± 0.23	1178 ± 62	500 ± 25	4.79 ± 1.27
[O I] 6300	39.84 ± 0.11	266 ± 63	112 ± 25	4.51 ± 0.66
H α Narrow	41.05 ± 0.01	266 ± 63	112 ± 25	77.03 ± 0.75
Hα Broad	41.49 ± 0.01	3829 ± 165	1724 ± 54	212.61 ± 3.41
[N II] 6585	40.68 ± 0.02	266 ± 63	112 ± 25	32.61 ± 0.75
[S II] 6718	40.42 ± 0.03	266 ± 63	112 ± 25	18.19 ± 0.74
[S II] 6732	40.19 ± 0.05	266 ± 63	112 ± 25	10.87 ± 0.73

Emission Summary

H α broad SNR	3.49
H β broad SNR	0.96
H γ broad SNR	0.00
AGN frac	0.43
Host frac	0.57
$\log L_{5100, \text{Host}}$	43.10
Fe II/H β	–
Fe II/[O III]	–

Quality Flags

spurious_hab/hbb	0/0
15100	1
balmer	2
balmer_snr	2
hb_width	2
balmer_width	2