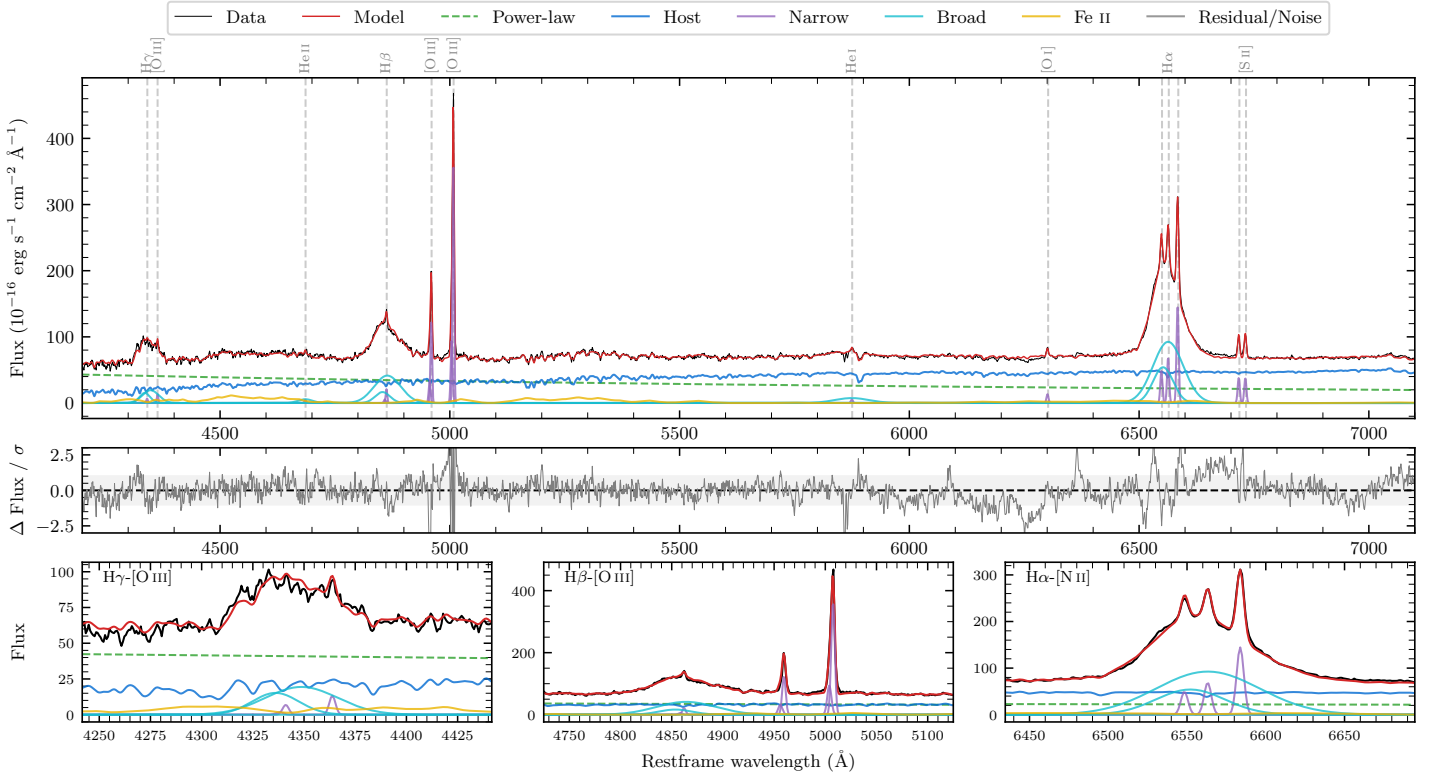
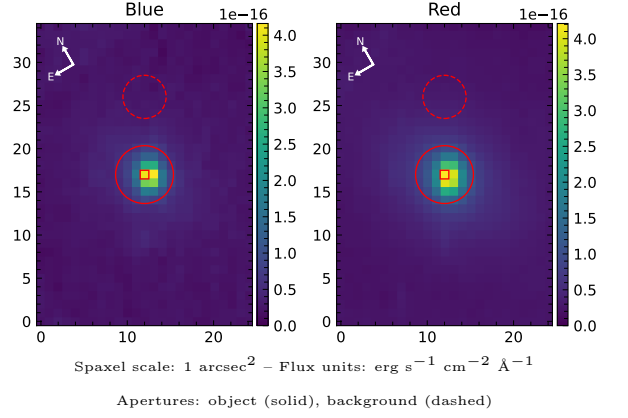


NGC 6814

Spectrum ID	286051911_sp1	Spectrum type	Sy 1.5
Alt name	g1942406-101925	Quality flag	good
z	0.0055	AGN reference	6dFGS
RA, Dec	295.6691, -10.3236	MW $E(B - V)$	0.159
MJD	60163.53	Power law α_ν	-0.51 ± 0.16
SNR/ \AA B/R	18.2/28.8	$\log L_{5100, \text{AGN}}$	42.05 ± 0.02
Obs airmass	1.07	$\log H\beta_{\text{Br}}/[\text{O III}]$	0.23 ± 0.02
SMSS ID	286051911	$\log M_{L5100}/M_\odot$	7.19 ± 0.05
Neighbour	5.5", 2399565663	$\log M_{\text{H}\alpha}/M_\odot$	6.82 ± 0.05
SMSS $\langle r_{6''}^{\text{ap}} \rangle$	14.03 ± 0.09	$\log M_{\text{H}\beta}/M_\odot$	7.23 ± 0.07
2MASS K_{ext}	7.66 ± 0.02	$\log M_{[\text{O III}]} / M_\odot$	7.22 ± 0.07



Emission Line Measurements

Line	$\log L$ (erg s^{-1})	FWHM (km s^{-1})	σ (km s^{-1})	EW (\AA)
H γ Narrow	38.39 ± 0.25	289 ± 63	142 ± 25	0.84 ± 0.26
Hγ Broad	39.93 ± 0.10	2597 ± 694	998 ± 240	31.88 ± 0.79
[O III] 4364	38.54 ± 0.19	249 ± 63	105 ± 25	1.26 ± 0.23
He II Narrow	38.15 ± 0.27	249 ± 63	105 ± 25	0.58 ± 0.19
He II Broad	39.18 ± 0.24	2368 ± 1012	1005 ± 430	6.27 ± 0.63
H β Narrow	38.92 ± 0.07	289 ± 63	142 ± 25	3.40 ± 0.28
Hβ Broad	40.38 ± 0.02	3667 ± 141	1444 ± 102	106.70 ± 0.94
[O III] 5007	40.15 ± 0.01	289 ± 63	142 ± 25	63.32 ± 0.25
He I Narrow	38.32 ± 0.21	249 ± 63	105 ± 25	1.18 ± 0.30
He I Broad	39.67 ± 0.10	4433 ± 1415	1882 ± 601	26.76 ± 1.39
[O I] 6300	38.70 ± 0.05	249 ± 63	105 ± 25	3.20 ± 0.22
H α Narrow	39.42 ± 0.03	249 ± 63	105 ± 25	17.93 ± 0.38
Hα Broad	40.86 ± 0.01	3199 ± 80	1195 ± 34	481.67 ± 1.14
[N II] 6585	39.75 ± 0.02	249 ± 63	105 ± 25	38.08 ± 0.38
[S II] 6718	39.18 ± 0.02	249 ± 63	105 ± 25	10.46 ± 0.27
[S II] 6732	39.18 ± 0.02	249 ± 63	105 ± 25	10.51 ± 0.27

Emission Summary

H α broad SNR	35.03
H β broad SNR	13.39
H γ broad SNR	7.36
AGN frac	0.50
Host frac	0.50
$\log L_{5100, \text{Host}}$	42.04
Fe II/H β	0.57
Fe II/[O III]	1.00

Quality Flags

spurious_hab/hbb	0/0
15100	0
balmer	0
balmer_snr	0
hb_width	0
balmer_width	0