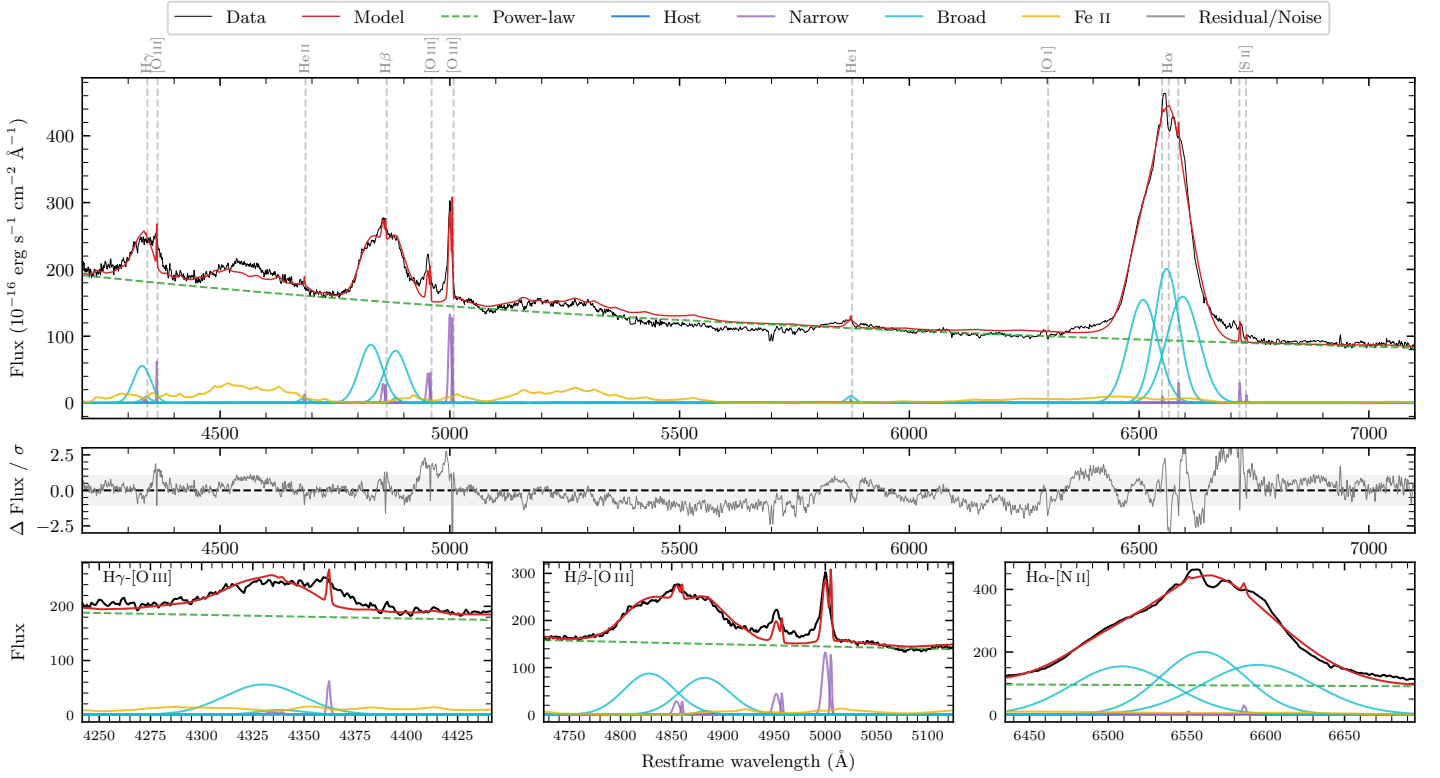
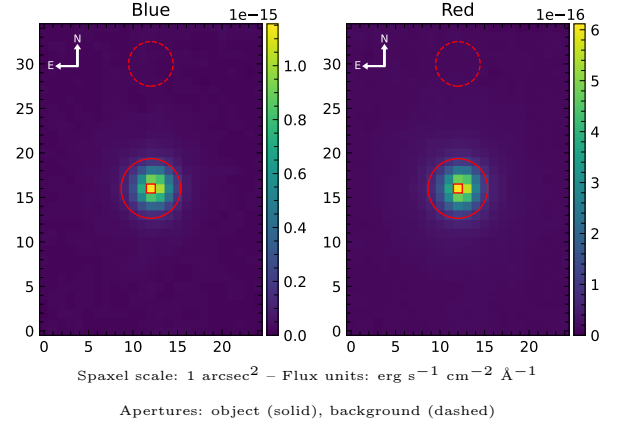


Z 395–23

Spectrum ID	27085669_sp1	Spectrum type	Sy 1.0
Alt name	g0516114–000859	Quality flag	bad_fit
z	0.0338	AGN reference	6dFGS
RA, Dec	79.0476, -0.1498	MW $E(B - V)$	0.110
MJD	60259.72	Power law α_ν	-0.40 ± 0.03
SNR/ \AA B/R	11.8/15.1	$\log L_{5100, \text{AGN}}$	44.29 ± 0.01
Obs airmass	1.25	$\log H\beta_{\text{Br}}/[\text{O III}]$	0.90 ± 0.03
SMSS ID	27085669	$\log M_{L5100}/M_\odot$	8.65 ± 0.02
Neighbour	11.4", 2050804779	$\log M_{\text{H}\alpha}/M_\odot$	8.57 ± 0.04
SMSS $\langle r_6'' \text{ap} \rangle$	13.74 ± 0.04	$\log M_{\text{H}\beta}/M_\odot$	8.67 ± 0.02
2MASS K_{ext}	9.85 ± 0.03	$\log M_{[\text{O III}]} / M_\odot$	8.42 ± 0.02



Emission Line Measurements

Line	$\log L$ (erg s ⁻¹)	FWHM (km s ⁻¹)	σ (km s ⁻¹)	EW (Å)
H γ Narrow	–	–	–	–
Hγ Broad	41.92 ± 0.04	2983 ± 128	1076 ± 29	16.51 ± 0.75
[O III] 4364	40.58 ± 0.19	126 ± 63	51 ± 25	0.69 ± 0.14
He II Narrow	39.91 ± 0.46	126 ± 63	51 ± 25	0.16 ± 0.12
He II Broad	40.73 ± 0.29	1568 ± 68	666 ± 27	1.17 ± 0.45
H β Narrow	40.92 ± 0.10	–	211 ± 27	1.81 ± 0.21
Hβ Broad	42.47 ± 0.01	6490 ± 111	2104 ± 26	71.07 ± 0.82
[O III] 5007	41.58 ± 0.03	–	211 ± 27	9.06 ± 0.26
He I Narrow	39.81 ± 0.42	126 ± 63	51 ± 25	0.18 ± 0.09
He I Broad	40.86 ± 0.12	1179 ± 62	500 ± 25	2.35 ± 0.33
[O I] 6300	–	–	–	–
H α Narrow	–	–	–	–
Hα Broad	43.05 ± 0.01	5109 ± 87	1927 ± 25	443.39 ± 1.04
[N II] 6585	40.40 ± 0.32	126 ± 63	51 ± 25	0.96 ± 0.20
[S II] 6718	40.45 ± 0.16	126 ± 63	51 ± 25	1.05 ± 0.15
[S II] 6732	40.05 ± 0.25	126 ± 63	51 ± 25	0.40 ± 0.12

Emission Summary

H α broad SNR	24.49
H β broad SNR	7.06
H γ broad SNR	4.61
AGN frac	0.99
Host frac	0.01
$\log L_{5100, \text{Host}}$	42.08
Fe II/H β	0.57
Fe II/[O III]	4.69

Quality Flags

spurious_hab/hbb	0/0
15100	0
balmer	0
balmer_snr	0
hb_width	0
balmer_width	0