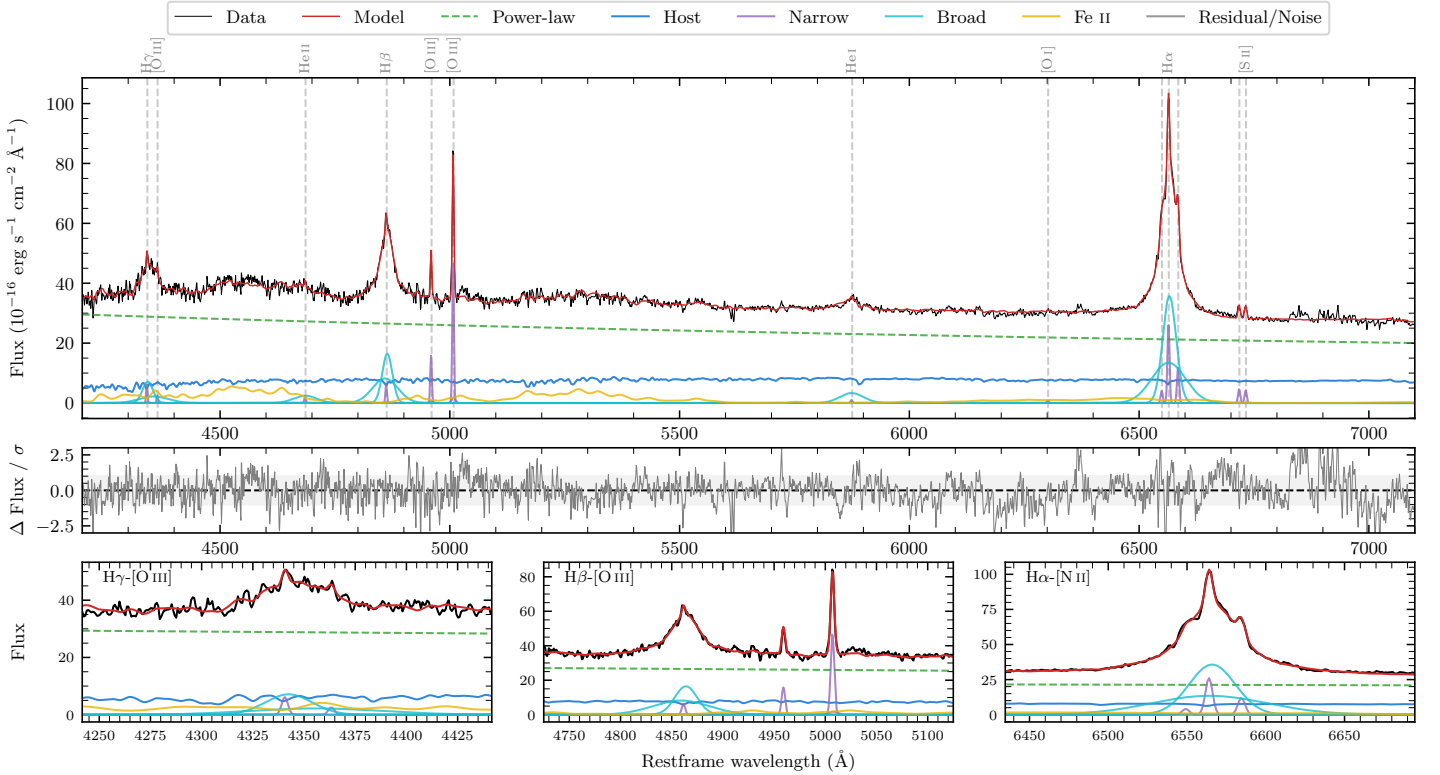
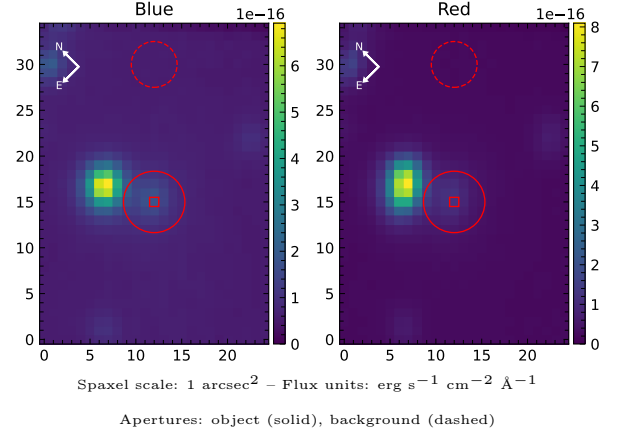


# 2MASS J18065901–5002462

Spectrum ID	2676348235_sp1	Spectrum type	Sy 1.2
Alt name	6706071161850699264	Quality flag	good
$z$	0.0500	AGN reference	AllBRICS2
RA, Dec	271.7447, -50.0474	MW $E(B - V)$	0.127
MJD	60830.6	Power law $\alpha_\nu$	$-1.26 \pm 0.02$
SNR/ $\text{\AA}$ B/R	26.2/37.9	$\log L_{5100, \text{AGN}}$	$43.88 \pm 0.01$
Obs airmass	1.08	$\log H\beta_{\text{Br}}/[\text{O III}]$	$0.65 \pm 0.01$
SMSS ID	2676348235	$\log M_{L5100}/M_\odot$	$7.46 \pm 0.03$
Neighbour	5.1", 2676348236	$\log M_{\text{H}\alpha}/M_\odot$	$7.18 \pm 0.03$
SMSS $\langle r_6''_{\text{ap}} \rangle$	nan $\pm$ nan	$\log M_{\text{H}\beta}/M_\odot$	$7.35 \pm 0.03$
2MASS $K_{\text{ext}}$	nan $\pm$ nan	$\log M_{[\text{O III}]} / M_\odot$	$7.19 \pm 0.04$



## Emission Line Measurements

Line	$\log L$ ( $\text{erg s}^{-1}$ )	FWHM ( $\text{km s}^{-1}$ )	$\sigma$ ( $\text{km s}^{-1}$ )	EW ( $\text{\AA}$ )
H $\gamma$ Narrow	$40.20 \pm 0.11$	$256 \pm 63$	$126 \pm 28$	$0.93 \pm 0.17$
<b>H<math>\gamma</math> Broad</b>	<b><math>41.37 \pm 0.03</math></b>	<b><math>2212 \pm 175</math></b>	<b><math>1137 \pm 83</math></b>	<b><math>13.81 \pm 0.54</math></b>
[O III] 4364	$39.78 \pm 0.22$	$250 \pm 63$	$105 \pm 25$	$0.35 \pm 0.12$
He II Narrow	$39.72 \pm 0.20$	$250 \pm 63$	$105 \pm 25$	$0.33 \pm 0.10$
<b>He II Broad</b>	<b><math>40.97 \pm 0.05</math></b>	<b><math>3742 \pm 184</math></b>	<b><math>1589 \pm 78</math></b>	<b><math>5.92 \pm 0.41</math></b>
H $\beta$ Narrow	$40.26 \pm 0.08$	$256 \pm 63$	$126 \pm 28$	$1.15 \pm 0.15$
<b>H<math>\beta</math> Broad</b>	<b><math>41.80 \pm 0.01</math></b>	<b><math>2014 \pm 64</math></b>	<b><math>1013 \pm 35</math></b>	<b><math>40.35 \pm 0.42</math></b>
[O III] 5007	$41.14 \pm 0.01$	$256 \pm 63$	$126 \pm 28$	$9.11 \pm 0.15$
He I Narrow	$39.53 \pm 0.22$	$250 \pm 63$	$105 \pm 25$	$0.25 \pm 0.08$
<b>He I Broad</b>	<b><math>41.12 \pm 0.02</math></b>	<b><math>3080 \pm 126</math></b>	<b><math>1308 \pm 53</math></b>	<b><math>9.75 \pm 0.29</math></b>
[O I] 6300	$39.43 \pm 0.23$	$250 \pm 63$	$105 \pm 25$	$0.21 \pm 0.08$
H $\alpha$ Narrow	$40.97 \pm 0.02$	$250 \pm 63$	$105 \pm 25$	$7.42 \pm 0.13$
<b>H<math>\alpha</math> Broad</b>	<b><math>42.20 \pm 0.01</math></b>	<b><math>1899 \pm 66</math></b>	<b><math>910 \pm 25</math></b>	<b><math>126.23 \pm 0.40</math></b>
[N II] 6585	$40.63 \pm 0.03$	$250 \pm 63$	$105 \pm 25$	$3.41 \pm 0.11$
[S II] 6718	$40.23 \pm 0.04$	$250 \pm 63$	$105 \pm 25$	$1.38 \pm 0.09$
[S II] 6732	$40.19 \pm 0.04$	$250 \pm 63$	$105 \pm 25$	$1.25 \pm 0.09$

## Emission Summary

H $\alpha$ broad SNR	34.82
H $\beta$ broad SNR	17.38
H $\gamma$ broad SNR	6.48
AGN frac	0.78
Host frac	0.22
$\log L_{5100, \text{Host}}$	43.33
Fe II/H $\beta$	1.15
Fe II/[O III]	5.22

## Quality Flags

spurious_hab/hbb	0/0
15100	0
balmer	0
balmer_snr	0
hb_width	1
balmer_width	0