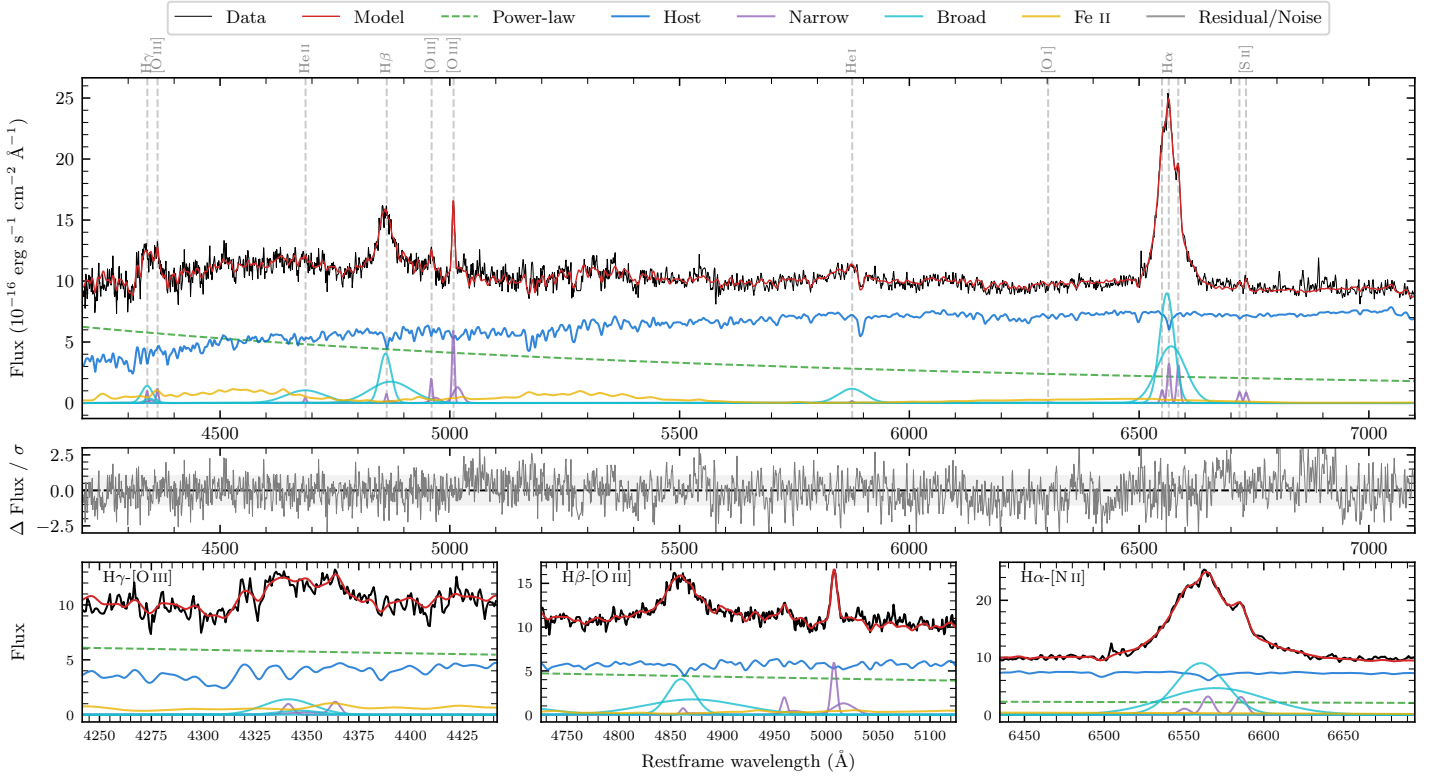
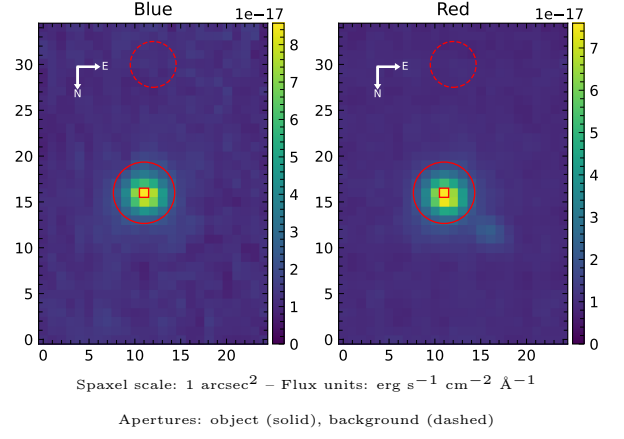


CTS 119

Spectrum ID	2656745_sp1	Spectrum type	Sy 1.2
Alt name	g2327160-341634	Quality flag	good
z	0.0560	AGN reference	6dFGS
RA, Dec	351.8167, -34.2761	MW $E(B - V)$	0.016
MJD	60179.58	Power law α_ν	0.38 ± 0.11
SNR/ \AA B/R	18.8/30.9	$\log L_{5100, \text{AGN}}$	43.18 ± 0.02
Obs airmass	1.06	$\log H\beta_{\text{Br}}/[\text{O III}]$	0.66 ± 0.03
SMSS ID	2656745	$\log M_{L5100}/M_\odot$	7.30 ± 0.04
Neighbour	5.8", 2656746	$\log M_{\text{H}\alpha}/M_\odot$	6.99 ± 0.03
SMSS $\langle r_{6'' \text{ap}} \rangle$	16.05 ± 0.09	$\log M_{\text{H}\beta}/M_\odot$	7.33 ± 0.04
2MASS K_{ext}	12.41 ± 0.12	$\log M_{[\text{O III}]} / M_\odot$	7.15 ± 0.05



Emission Line Measurements

Line	$\log L$ (erg s^{-1})	FWHM (km s^{-1})	σ (km s^{-1})	EW (\AA)
H γ Narrow	39.92 ± 0.23	426 ± 63	499 ± 30	1.93 ± 0.53
Hγ Broad	40.63 ± 0.07	1914 ± 96	705 ± 32	9.48 ± 0.65
[O III] 4364	39.72 ± 0.16	385 ± 63	162 ± 25	1.24 ± 0.28
He II Narrow	39.34 ± 0.31	385 ± 63	162 ± 25	0.60 ± 0.29
He II Broad	40.95 ± 0.04	6386 ± 64	2712 ± 26	24.31 ± 1.27
H β Narrow	39.85 ± 0.24	426 ± 63	499 ± 30	2.14 ± 0.60
Hβ Broad	41.42 ± 0.02	2380 ± 85	1645 ± 43	80.13 ± 1.40
[O III] 5007	40.76 ± 0.02	426 ± 63	499 ± 30	18.81 ± 0.68
He I Narrow	39.00 ± 0.40	385 ± 63	162 ± 25	0.47 ± 0.31
He I Broad	40.84 ± 0.03	3522 ± 66	1495 ± 27	32.33 ± 1.05
[O I] 6300	—	—	—	—
H α Narrow	40.36 ± 0.04	385 ± 63	162 ± 25	13.94 ± 0.57
Hα Broad	41.76 ± 0.01	2073 ± 66	913 ± 25	353.21 ± 1.48
[N II] 6585	40.34 ± 0.04	385 ± 63	162 ± 25	13.69 ± 0.56
[S II] 6718	39.81 ± 0.07	385 ± 63	162 ± 25	4.21 ± 0.45
[S II] 6732	39.79 ± 0.08	385 ± 63	162 ± 25	4.04 ± 0.44

Emission Summary

H α broad SNR	24.23
H β broad SNR	10.36
H γ broad SNR	3.29
AGN frac	0.41
Host frac	0.59
$\log L_{5100, \text{Host}}$	43.33
Fe II/H β	0.86
Fe II/[O III]	3.91

Quality Flags

spurious_hab/hbb	0/0
15100	2
balmer	0
balmer_snr	0
hb_width	1
balmer_width	0