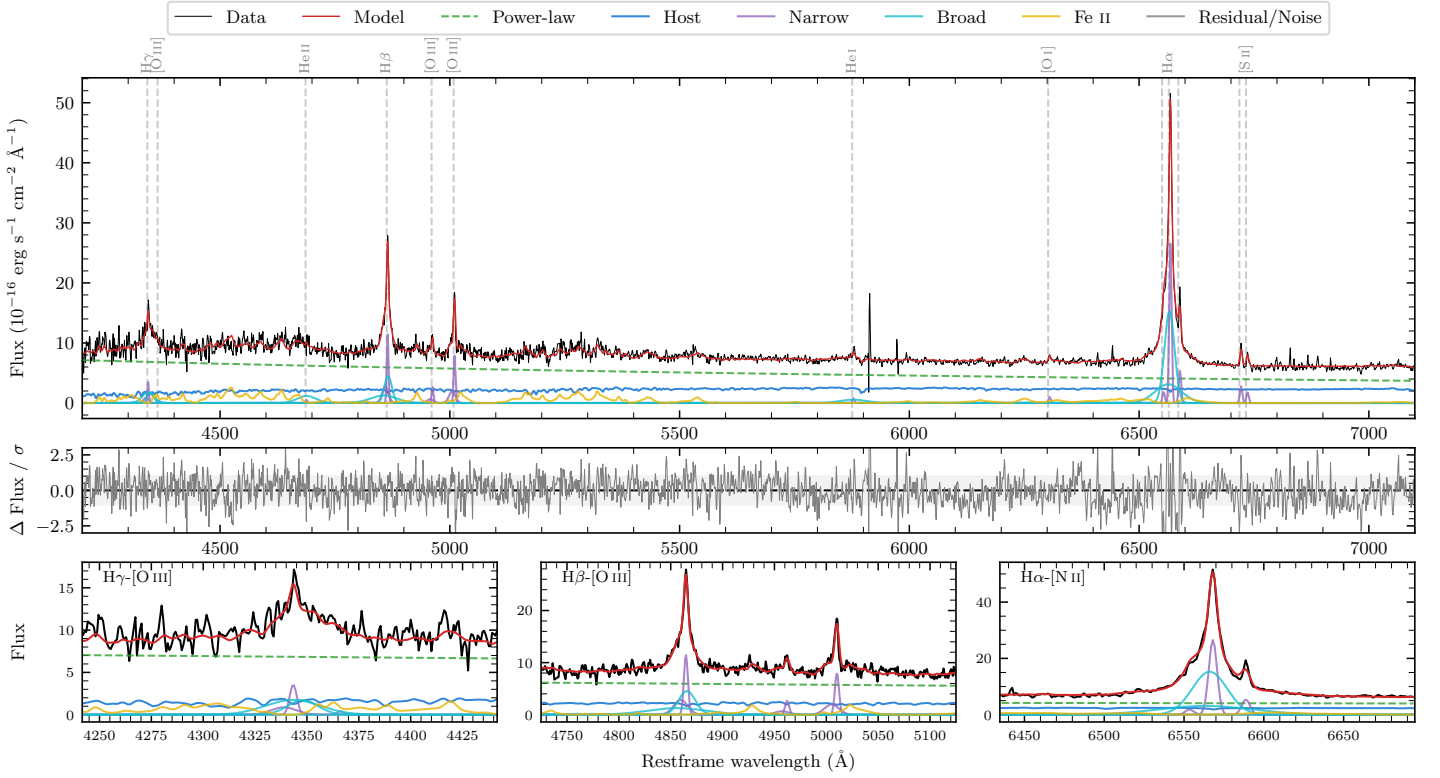
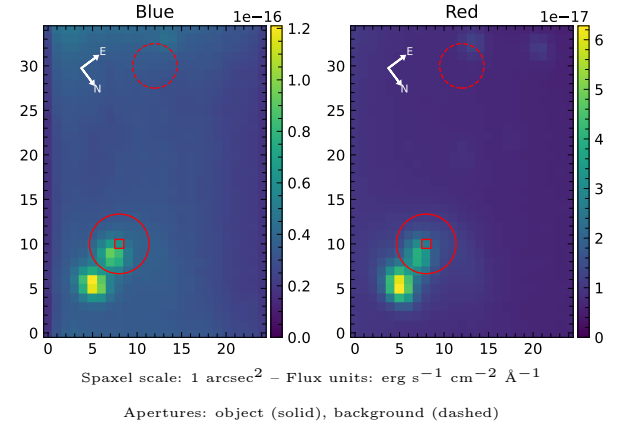


# 6dFGS gJ093319.4–701220

Spectrum ID	2647868530_sp1	Spectrum type	Sy 1.2
Alt name	g0933194–701220	Quality flag	good
$z$	0.0660	AGN reference	6dFGS
RA, Dec	143.3308, –70.2055	MW $E(B - V)$	0.155
MJD	59019.41	Power law $\alpha_\nu$	$-0.75 \pm 0.07$
SNR/ $\text{\AA}$ B/R	10.0/15.7	$\log L_{5100, \text{AGN}}$	$43.47 \pm 0.01$
Obs airmass	1.61	$\log H\beta_{\text{Br}}/[\text{O III}]$	$0.39 \pm 0.05$
SMSS ID	2647868530	$\log M_{L5100}/M_\odot$	$6.96 \pm 0.04$
Neighbour	1.0", 453593697	$\log M_{\text{H}\alpha}/M_\odot$	$6.66 \pm 0.04$
SMSS $\langle r_6''_{\text{ap}} \rangle$	nan $\pm$ nan	$\log M_{\text{H}\beta}/M_\odot$	$6.80 \pm 0.05$
2MASS $K_{\text{ext}}$	$12.73 \pm 0.14$	$\log M_{[\text{O III}]} / M_\odot$	$6.75 \pm 0.05$



## Emission Line Measurements

Line	$\log L$ (erg s <sup>-1</sup> )	FWHM (km s <sup>-1</sup> )	$\sigma$ (km s <sup>-1</sup> )	EW (Å)
H $\gamma$ Narrow	$40.50 \pm 0.11$	$322 \pm 63$	$335 \pm 34$	$4.45 \pm 0.63$
<b>H<math>\gamma</math> Broad</b>	<b><math>40.99 \pm 0.07</math></b>	<b><math>1593 \pm 228</math></b>	<b><math>671 \pm 71</math></b>	<b><math>13.89 \pm 0.94</math></b>
[O III] 4364	—	—	—	—
He II Narrow	$39.45 \pm 0.39$	$282 \pm 63$	$119 \pm 25$	$0.44 \pm 0.30$
<b>He II Broad</b>	<b><math>40.83 \pm 0.07</math></b>	<b><math>3076 \pm 126</math></b>	<b><math>1306 \pm 53</math></b>	<b><math>10.41 \pm 1.07</math></b>
H $\beta$ Narrow	$41.06 \pm 0.05$	$322 \pm 63$	$335 \pm 34$	$18.65 \pm 0.62$
<b>H<math>\beta</math> Broad</b>	<b><math>41.31 \pm 0.04</math></b>	<b><math>1388 \pm 65</math></b>	<b><math>862 \pm 69</math></b>	<b><math>32.65 \pm 1.24</math></b>
[O III] 5007	$40.92 \pm 0.03$	$322 \pm 63$	$335 \pm 34$	$13.78 \pm 0.63$
He I Narrow	$39.72 \pm 0.14$	$282 \pm 63$	$119 \pm 25$	$1.08 \pm 0.23$
<b>He I Broad</b>	<b><math>40.65 \pm 0.07</math></b>	<b><math>3340 \pm 124</math></b>	<b><math>1418 \pm 52</math></b>	<b><math>9.01 \pm 0.84</math></b>
[O I] 6300	$39.85 \pm 0.10$	$282 \pm 63$	$119 \pm 25$	$1.59 \pm 0.22$
H $\alpha$ Narrow	$41.29 \pm 0.01$	$282 \pm 63$	$119 \pm 25$	$45.43 \pm 0.32$
<b>H<math>\alpha</math> Broad</b>	<b><math>41.86 \pm 0.01</math></b>	<b><math>1318 \pm 63</math></b>	<b><math>620 \pm 25</math></b>	<b><math>169.03 \pm 0.95</math></b>
[N II] 6585	$40.59 \pm 0.02$	$282 \pm 63$	$119 \pm 25$	$9.24 \pm 0.29$
[S II] 6718	$40.32 \pm 0.04$	$282 \pm 63$	$119 \pm 25$	$5.03 \pm 0.27$
[S II] 6732	$40.12 \pm 0.06$	$282 \pm 63$	$119 \pm 25$	$3.20 \pm 0.30$

## Emission Summary

H $\alpha$ broad SNR	22.00
H $\beta$ broad SNR	6.86
H $\gamma$ broad SNR	4.06
AGN frac	0.72
Host frac	0.28
$\log L_{5100, \text{Host}}$	43.06
Fe II/H $\beta$	1.85
Fe II/[O III]	4.55

## Quality Flags

spurious_hab/hbb	0/0
15100	0
balmer	0
balmer_snr	0
hb_width	1
balmer_width	0