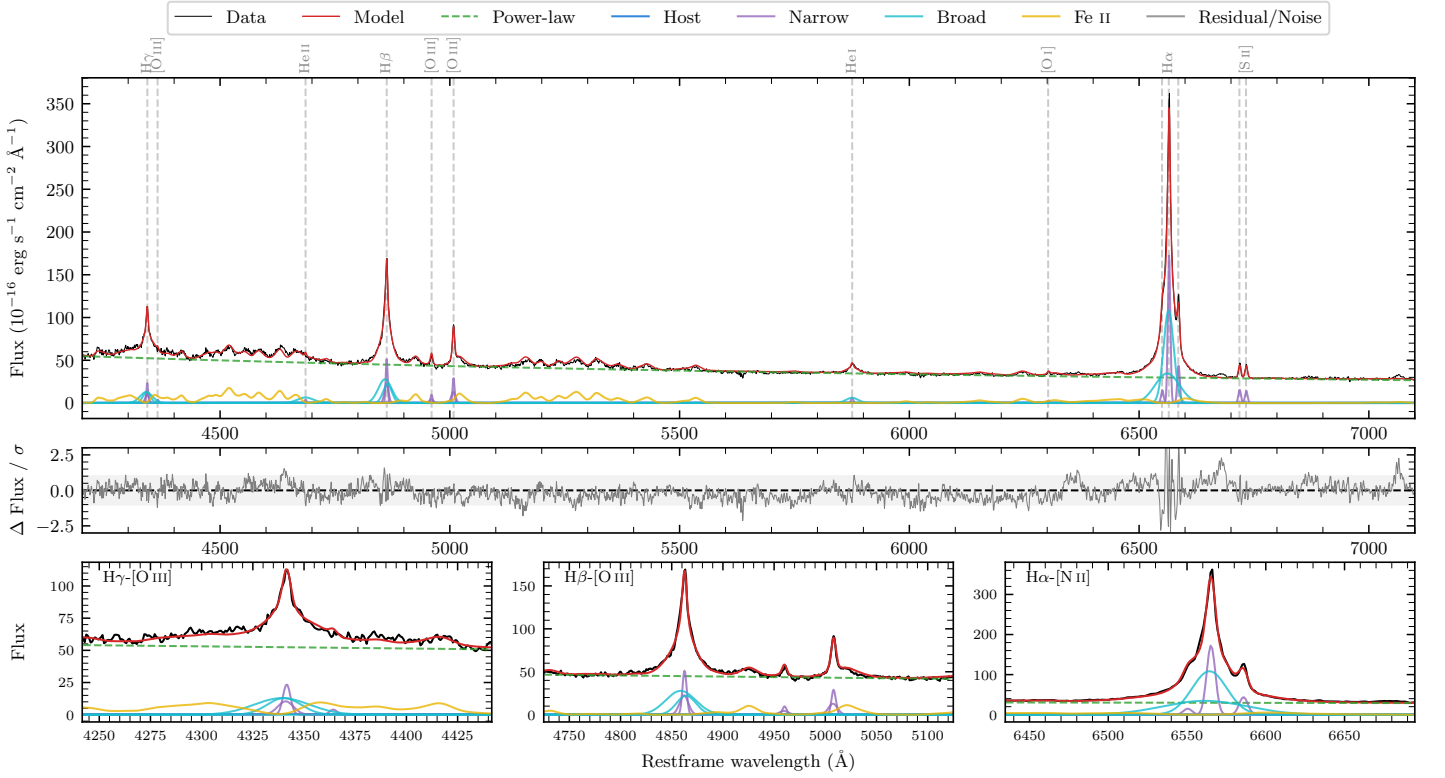
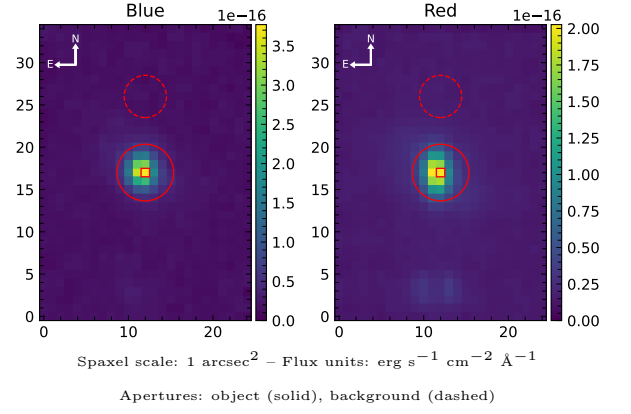


LEDA 2817167

Spectrum ID	264756987_sp1	Spectrum type	Sy 1.0
Alt name	g1943353-163108	Quality flag	good
z	0.0463	AGN reference	6dFGS
RA, Dec	295.8968, -16.5190	MW $E(B - V)$	0.121
MJD	60082.7	Power law α_ν	-0.63 ± 0.04
SNR/ \AA B/R	11.9/13.6	$\log L_{5100, \text{AGN}}$	44.03 ± 0.01
Obs airmass	1.09	$\log H\beta_{\text{Br}}/[\text{O III}]$	0.76 ± 0.05
SMSS ID	264756987	$\log M_{L5100}/M_\odot$	7.40 ± 0.16
Neighbour	13.6", 264756986	$\log M_{\text{H}\alpha}/M_\odot$	7.07 ± 0.06
SMSS $\langle r_6'' \text{ap} \rangle$	15.51 ± 0.11	$\log M_{\text{H}\beta}/M_\odot$	7.29 ± 0.16
2MASS K_{ext}	11.74 ± 0.07	$\log M_{[\text{O III}]} / M_\odot$	7.08 ± 0.16



Emission Line Measurements

Line	$\log L$ (erg s^{-1})	FWHM (km s^{-1})	σ (km s^{-1})	EW (\AA)
H γ Narrow	41.04 ± 0.14	362 ± 72	210 ± 63	4.14 ± 0.32
Hγ Broad	41.59 ± 0.05	1814 ± 284	641 ± 77	14.01 ± 0.57
[O III] 4364	39.97 ± 0.32	299 ± 65	125 ± 26	0.36 ± 0.19
He II Narrow	40.05 ± 0.31	299 ± 65	125 ± 26	0.48 ± 0.19
He II Broad	41.21 ± 0.09	2617 ± 448	1111 ± 190	6.31 ± 0.58
H β Narrow	41.43 ± 0.15	362 ± 72	210 ± 63	11.80 ± 0.34
Hβ Broad	41.94 ± 0.03	1742 ± 292	679 ± 153	36.03 ± 0.57
[O III] 5007	41.18 ± 0.05	362 ± 72	210 ± 63	7.17 ± 0.30
He I Narrow	40.27 ± 0.17	299 ± 65	125 ± 26	1.07 ± 0.18
He I Broad	41.03 ± 0.08	1583 ± 234	672 ± 99	6.14 ± 0.41
[O I] 6300	40.00 ± 0.19	299 ± 65	125 ± 26	0.64 ± 0.18
H α Narrow	41.79 ± 0.03	299 ± 65	125 ± 26	41.96 ± 0.47
Hα Broad	42.45 ± 0.02	1398 ± 97	663 ± 82	186.83 ± 0.85
[N II] 6585	41.20 ± 0.05	299 ± 65	125 ± 26	10.73 ± 0.33
[S II] 6718	40.75 ± 0.05	299 ± 65	125 ± 26	3.96 ± 0.21
[S II] 6732	40.72 ± 0.05	299 ± 65	125 ± 26	3.67 ± 0.22

Emission Summary

H α broad SNR	34.72
H β broad SNR	12.37
H γ broad SNR	5.99
AGN frac	0.99
Host frac	0.01
$\log L_{5100, \text{Host}}$	42.11
Fe II/H β	1.68
Fe II/[O III]	8.81

Quality Flags

spurious_hab/hbb	0/0
15100	0
balmer	0
balmer_snr	0
hb_width	0
balmer_width	0