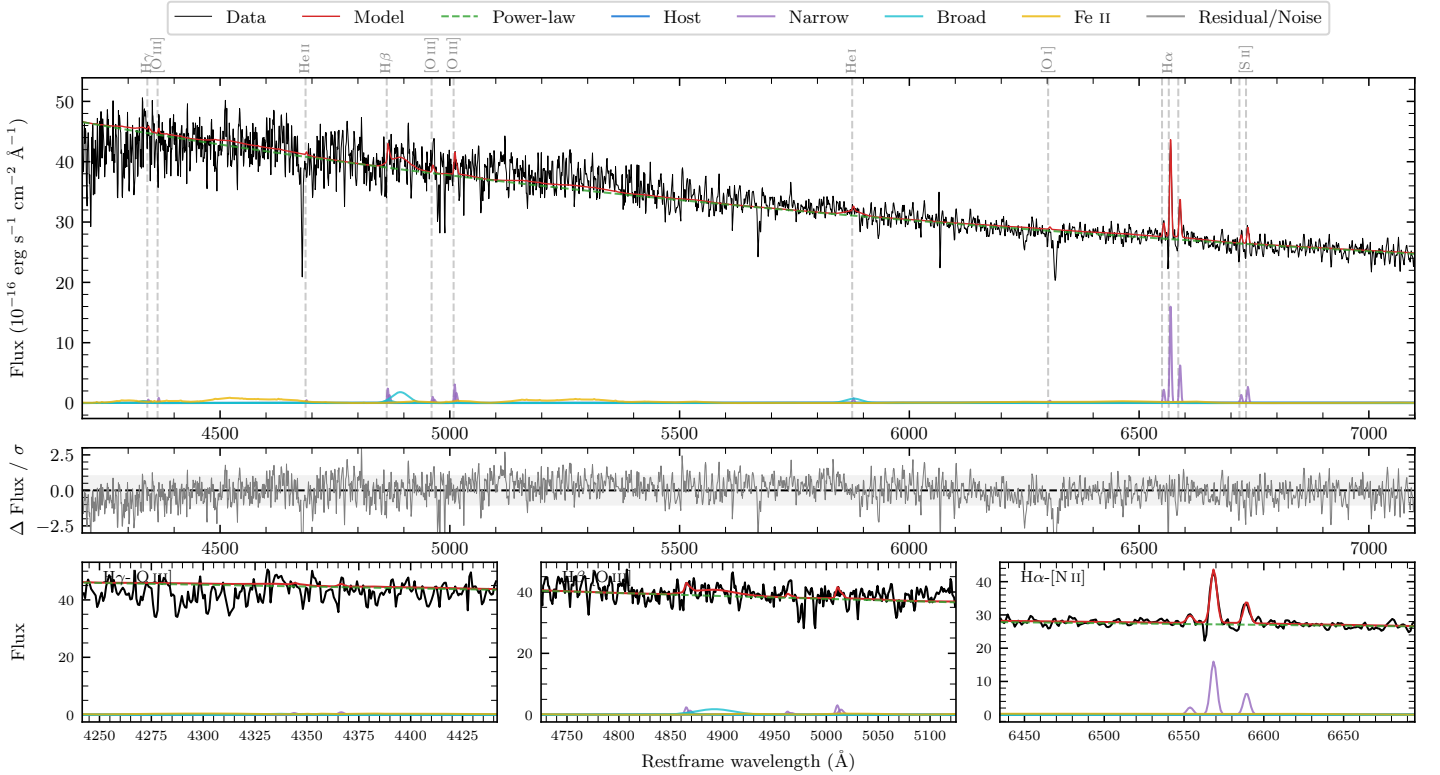
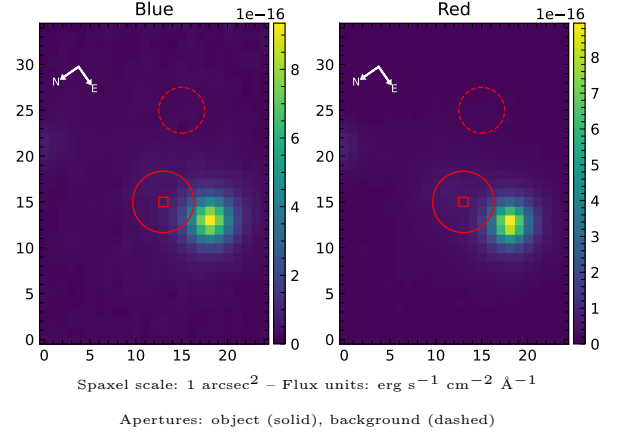


LEDA 4078421

Spectrum ID	264339314_sp1	Spectrum type	Sy 2
Alt name	g1924554-162500	Quality flag	good
z	0.0397	AGN reference	6dFGS
RA, Dec	291.2307, -16.4168	MW $E(B - V)$	0.144
MJD	60914.46	Power law α_ν	-0.79 ± 0.02
SNR/ \AA B/R	13.3/19.1	$\log L_{5100, \text{AGN}}$	43.83 ± 0.01
Obs airmass	1.03	$\log H\beta_{\text{Br}}/[\text{O III}]$	—
SMSS ID	264339314	$\log M_{L5100}/M_\odot$	—
Neighbour	7.2", 264339316	$\log M_{\text{H}\alpha}/M_\odot$	—
SMSS $\langle r_{6''}^{\text{ap}} \rangle$	12.99 ± 0.01	$\log M_{\text{H}\beta}/M_\odot$	—
2MASS K_{ext}	11.30 ± 0.07	$\log M_{[\text{O III}]} / M_\odot$	—



Emission Line Measurements

Line	$\log L$ (erg s $^{-1}$)	FWHM (km s $^{-1}$)	σ (km s $^{-1}$)	EW (\AA)
H γ Narrow	—	—	—	—
Hγ Broad	—	—	—	—
[O III] 4364	—	—	—	—
He II Narrow	—	—	—	—
He II Broad	—	—	—	—
H β Narrow	39.80 ± 0.29	340 ± 106	157 ± 26	0.44 ± 0.17
Hβ Broad	—	—	—	—
[O III] 5007	39.92 ± 0.18	340 ± 106	158 ± 26	0.59 ± 0.18
He I Narrow	39.13 ± 0.46	221 ± 62	91 ± 25	0.12 ± 0.10
He I Broad	40.10 ± 0.26	2162 ± 62	918 ± 25	1.12 ± 0.32
[O I] 6300	—	—	—	—
H α Narrow	40.47 ± 0.03	221 ± 62	91 ± 25	3.04 ± 0.13
Hα Broad	—	—	—	—
[N II] 6585	40.08 ± 0.08	221 ± 62	91 ± 25	1.24 ± 0.12
[S II] 6718	39.42 ± 0.30	221 ± 62	91 ± 25	0.28 ± 0.12
[S II] 6732	39.71 ± 0.16	221 ± 62	91 ± 25	0.54 ± 0.12

Emission Summary

H α broad SNR	0.15
H β broad SNR	0.00
H γ broad SNR	0.00
AGN frac	1.00
Host frac	0.00
$\log L_{5100, \text{Host}}$	40.65
Fe II/H β	—
Fe II/[O III]	7.88

Quality Flags

spurious_hab/hbb	0/0
15100	0
balmer	2
balmer_snr	2
hb_width	2
balmer_width	2