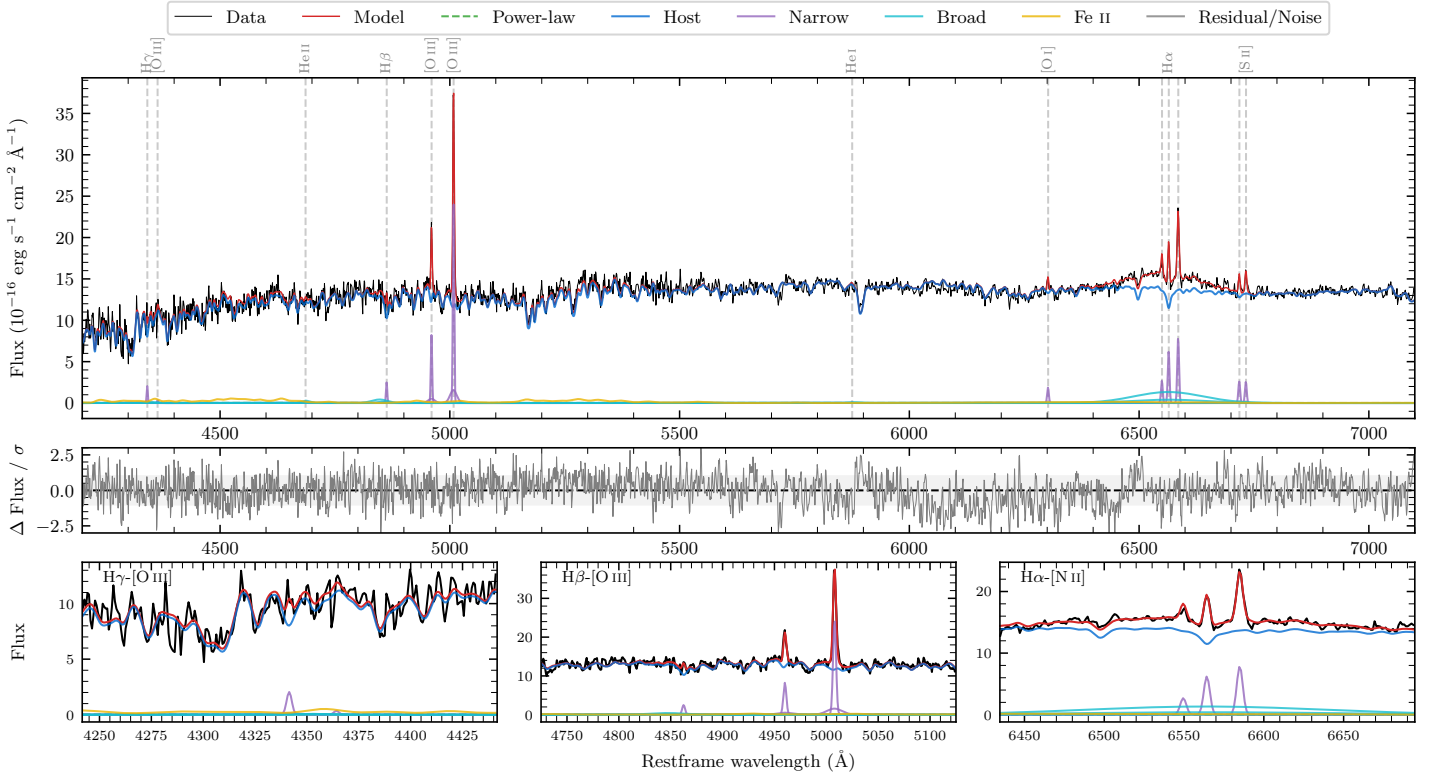
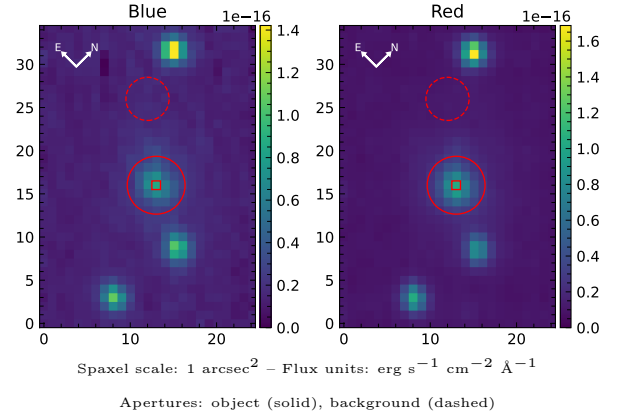


LEDA 4684809

Spectrum ID	264228450_sp1	Spectrum type	Sy 1.5+
Alt name	g1932177-173622	Quality flag	good
z	0.0307	AGN reference	6dFGS
RA, Dec	293.0740, -17.6060	MW $E(B - V)$	0.089
MJD	60163.52	Power law α_ν	0.38 ± 0.15
SNR/ \AA B/R	15.5/31.5	$\log L_{5100, \text{AGN}}/M_\odot$	40.14 ± 0.60
Obs airmass	1.03	$\log H\beta_{\text{Br}}/[\text{O III}]$	< -0.07
SMSS ID	264228450	$\log M_{L5100}/M_\odot$	—
Neighbour	7.4", 264228449	$\log M_{\text{H}\alpha}/M_\odot$	7.65 ± 0.05
SMSS $\langle r_6'' \text{ap} \rangle$	15.69 ± 0.07	$\log M_{\text{H}\beta}/M_\odot$	—
2MASS K_{ext}	11.59 ± 0.06	$\log M_{[\text{O III}]} / M_\odot$	—



Emission Line Measurements

Line	$\log L$ (erg s $^{-1}$)	FWHM (km s $^{-1}$)	σ (km s $^{-1}$)	EW (Å)
H γ Narrow	39.28 ± 0.25	219 ± 63	227 ± 31	477.28 ± 210.27
Hγ Broad	—	—	—	—
[O III] 4364	—	—	—	—
He II Narrow	—	—	—	—
He II Broad	39.17 ± 0.38	1343 ± 62	570 ± 25	437.81 ± 241.86
H β Narrow	39.42 ± 0.11	219 ± 63	227 ± 31	854.63 ± 207.69
Hβ Broad	< 40.35	—	—	—
[O III] 5007	40.42 ± 0.02	219 ± 63	227 ± 31	9263.49 ± 247.68
He I Narrow	—	—	—	—
He I Broad	38.83 ± 0.45	1421 ± 62	603 ± 25	342.34 ± 248.53
[O I] 6300	39.28 ± 0.08	209 ± 62	87 ± 25	1156.55 ± 120.26
H α Narrow	39.82 ± 0.02	209 ± 62	87 ± 25	4430.33 ± 139.82
Hα Broad	40.88 ± 0.02	8195 ± 143	3059 ± 57	49575.84 ± 884.51
[N II] 6585	39.93 ± 0.02	209 ± 62	87 ± 25	5675.19 ± 146.94
[S II] 6718	39.45 ± 0.07	209 ± 62	87 ± 25	2000.60 ± 151.85
[S II] 6732	39.45 ± 0.06	209 ± 62	87 ± 25	1994.00 ± 146.91

Emission Summary

H α broad SNR	2.13
H β broad SNR	0.83
H γ broad SNR	0.00
AGN frac	0.00
Host frac	1.00
$\log L_{5100, \text{Host}}$	43.13
Fe II/H β	—
Fe II/[O III]	0.98

Quality Flags

spurious_hab/hbb	0/0
15100	2
balmer	2
balmer_snr	2
hb_width	2
balmer_width	2