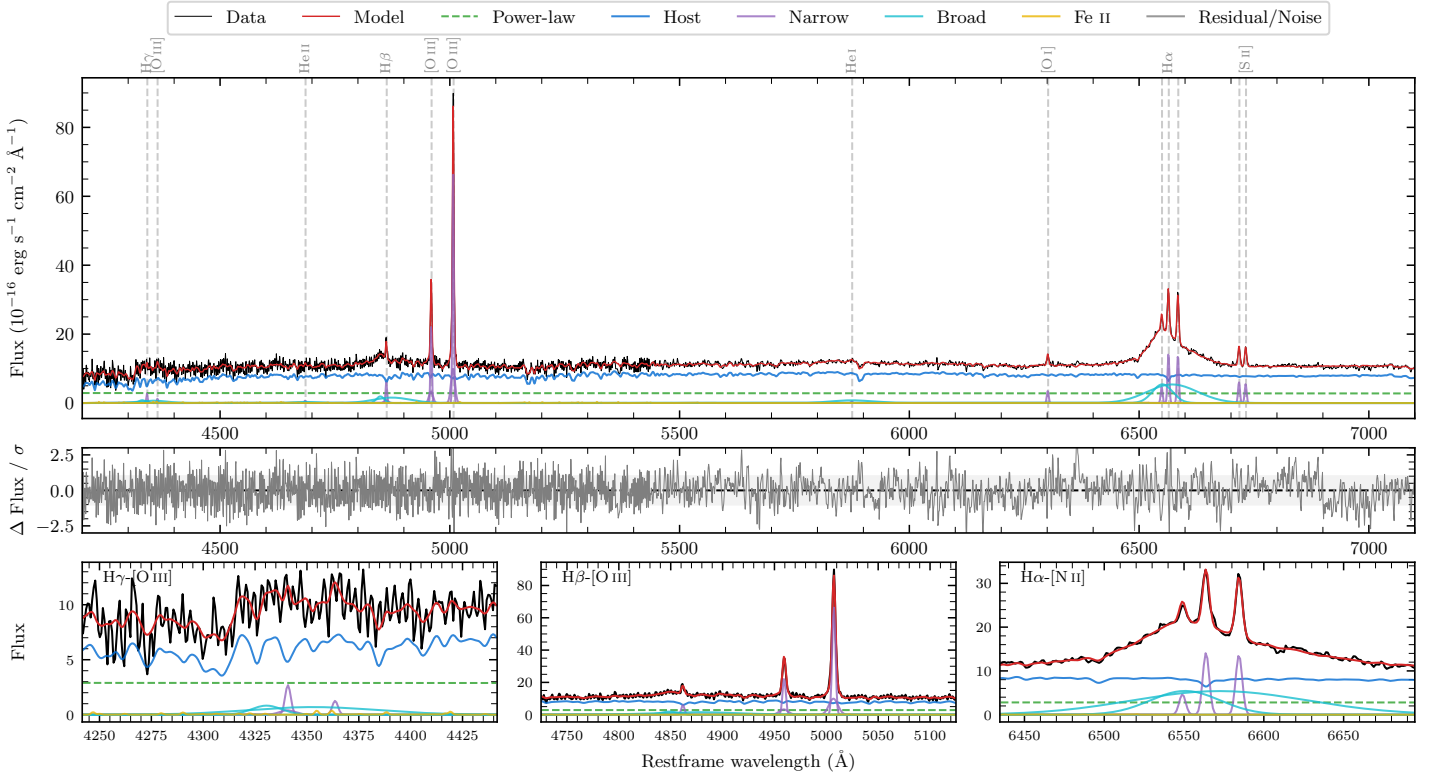
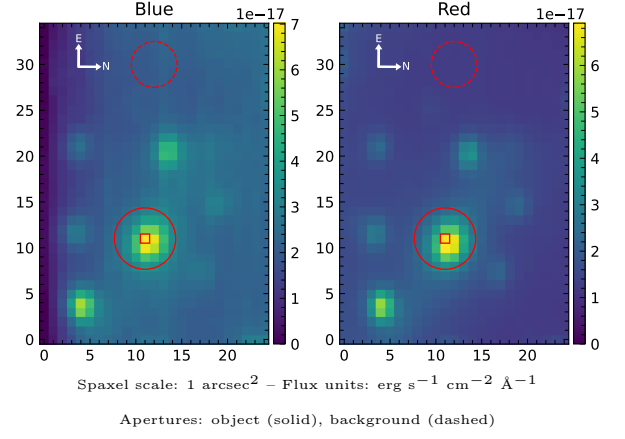


ESO 593–12

Spectrum ID	263996974_sp1	Spectrum type	Sy 1.5
Alt name	g1922540–185543	Quality flag	good
z	0.0392	AGN reference	6dFGS
RA, Dec	290.7249, –18.9284	MW $E(B - V)$	0.090
MJD	59732.71	Power law α_ν	-1.92 ± 0.06
SNR/ \AA B/R	11.3/25.1	$\log L_{5100, \text{AGN}}$	42.72 ± 0.04
Obs airmass	1.03	$\log H\beta_{\text{Br}}/[\text{O III}]$	-0.26 ± 0.03
SMSS ID	263996974	$\log M_{L5100}/M_\odot$	7.11 ± 0.30
Neighbour	4.1", 2372041813	$\log M_{H\alpha}/M_\odot$	7.39 ± 0.03
SMSS $\langle r_{6'' \text{ap}} \rangle$	16.46 ± 0.02	$\log M_{H\beta}/M_\odot$	7.08 ± 0.30
2MASS K_{ext}	11.72 ± 0.10	$\log M_{[\text{O III}]} / M_\odot$	7.34 ± 0.30



Emission Line Measurements

Line	$\log L$ (erg s $^{-1}$)	FWHM (km s $^{-1}$)	σ (km s $^{-1}$)	EW (Angstroms)
H γ Narrow	39.69 ± 0.14	243 ± 63	160 ± 26	4.63 ± 1.21
Hγ Broad	40.42 ± 0.12	2552 ± 1319	1673 ± 113	24.91 ± 3.64
[O III] 4364	39.21 ± 0.30	224 ± 63	93 ± 25	1.54 ± 0.70
He II Narrow	38.98 ± 0.37	224 ± 63	93 ± 25	0.92 ± 0.59
He II Broad	39.86 ± 0.24	3449 ± 96	1464 ± 40	6.92 ± 2.45
H β Narrow	40.09 ± 0.05	243 ± 63	161 ± 26	11.80 ± 0.98
Hβ Broad	40.88 ± 0.03	2392 ± 804	1913 ± 49	72.41 ± 3.12
[O III] 5007	41.14 ± 0.01	243 ± 63	161 ± 26	133.31 ± 1.04
He I Narrow	38.84 ± 0.34	224 ± 63	93 ± 25	0.68 ± 0.46
He I Broad	40.51 ± 0.04	5255 ± 139	2231 ± 58	31.88 ± 1.77
[O I] 6300	39.81 ± 0.04	224 ± 63	93 ± 25	6.42 ± 0.35
H α Narrow	40.43 ± 0.01	224 ± 63	93 ± 25	26.91 ± 0.41
Hα Broad	41.59 ± 0.01	3672 ± 94	1796 ± 26	385.09 ± 1.95
[N II] 6585	40.42 ± 0.01	224 ± 63	93 ± 25	26.06 ± 0.40
[S II] 6718	40.07 ± 0.02	224 ± 63	93 ± 25	11.73 ± 0.39
[S II] 6732	40.04 ± 0.02	224 ± 63	93 ± 25	10.73 ± 0.38

Emission Summary

H α broad SNR	11.36
H β broad SNR	3.49
H γ broad SNR	1.50
AGN frac	0.28
Host frac	0.72
$\log L_{5100, \text{Host}}$	43.13
Fe II/H β	–
Fe II/[O III]	–

Quality Flags

spurious_hab/hbb	0/0
15100	1
balmer	0
balmer_snr	1
hb_width	2
balmer_width	2