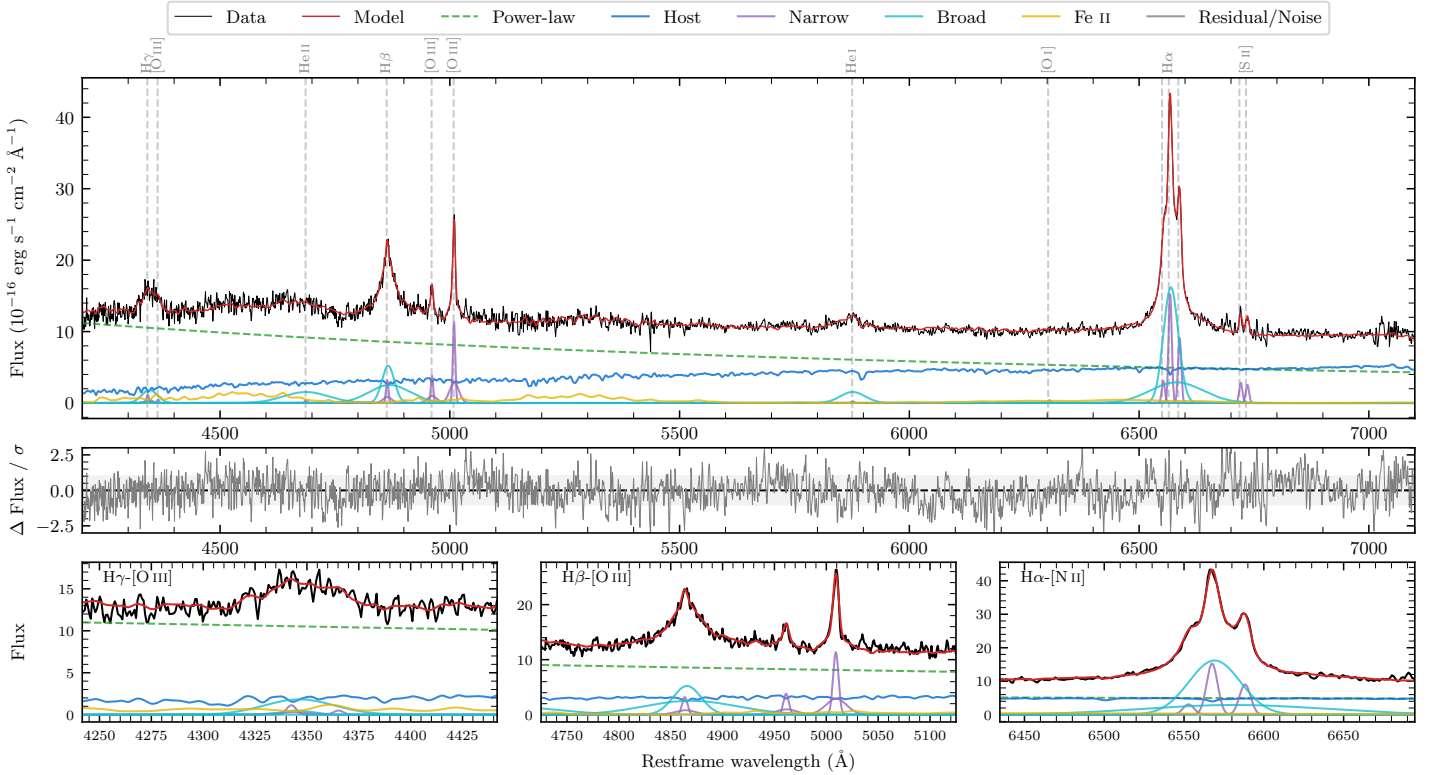
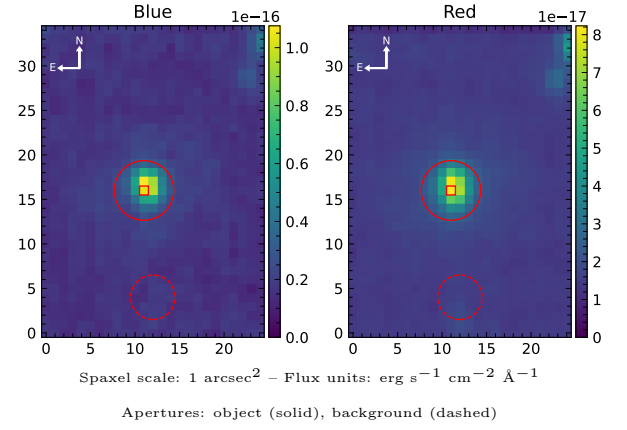


2MASS J19263107–1917032

Spectrum ID	259935731_sp1	Spectrum type	Sy 1.2
Alt name	g1926311–191703	Quality flag	good
z	0.0836	AGN reference	6dFGS
RA, Dec	291.6295, –19.2843	MW $E(B - V)$	0.086
MJD	60082.69	Power law α_ν	-0.17 ± 0.11
SNR/ \AA B/R	17.9/23.3	$\log L_{5100, \text{AGN}}/M_\odot$	43.84 ± 0.02
Obs airmass	1.07	$\log H\beta_{\text{Br}}/[\text{O III}]$	0.49 ± 0.02
SMSS ID	259935731	$\log M_{L5100}/M_\odot$	7.66 ± 0.04
Neighbour	14.7", 259935698	$\log M_{H\alpha}/M_\odot$	7.26 ± 0.03
SMSS $\langle r_6'' \text{ap} \rangle$	16.26 ± 0.04	$\log M_{H\beta}/M_\odot$	7.63 ± 0.04
2MASS K_{ext}	12.45 ± 0.10	$\log M_{[\text{O III}]} / M_\odot$	7.55 ± 0.04



Emission Line Measurements

Line	$\log L$ (erg s ⁻¹)	FWHM (km s ⁻¹)	σ (km s ⁻¹)	EW (Å)
H γ Narrow	40.38 ± 0.25	436 ± 63	435 ± 29	1.32 ± 0.38
Hγ Broad	41.22 ± 0.06	2316 ± 329	944 ± 59	8.89 ± 0.54
[O III] 4364	39.72 ± 0.38	373 ± 63	157 ± 25	0.29 ± 0.20
He II Narrow	39.70 ± 0.35	373 ± 63	157 ± 25	0.32 ± 0.19
He II Broad	41.55 ± 0.03	7365 ± 112	3128 ± 47	22.42 ± 0.92
H β Narrow	40.88 ± 0.08	436 ± 63	435 ± 29	5.15 ± 0.43
Hβ Broad	41.94 ± 0.01	2577 ± 110	1608 ± 48	58.35 ± 0.94
[O III] 5007	41.44 ± 0.02	436 ± 63	436 ± 29	19.75 ± 0.47
He I Narrow	39.51 ± 0.39	373 ± 63	157 ± 25	0.31 ± 0.21
He I Broad	41.29 ± 0.03	3237 ± 106	1375 ± 44	18.68 ± 0.65
[O I] 6300	39.78 ± 0.26	373 ± 63	157 ± 25	0.66 ± 0.24
H α Narrow	41.39 ± 0.02	373 ± 63	157 ± 25	29.02 ± 0.33
Hα Broad	42.30 ± 0.01	1932 ± 65	1066 ± 25	234.48 ± 1.24
[N II] 6585	41.17 ± 0.02	373 ± 63	157 ± 25	17.33 ± 0.31
[S II] 6718	40.67 ± 0.04	373 ± 63	157 ± 25	5.76 ± 0.37
[S II] 6732	40.63 ± 0.04	373 ± 63	157 ± 25	5.18 ± 0.36

Emission Summary

H α broad SNR	27.14
H β broad SNR	11.02
H γ broad SNR	3.46
AGN frac	0.71
Host frac	0.29
$\log L_{5100, \text{Host}}$	43.46
Fe II/H β	0.69
Fe II/[O III]	2.15

Quality Flags

spurious_hab/hbb	0/0
15100	0
balmer	0
balmer_snr	0
hb_width	1
balmer_width	0