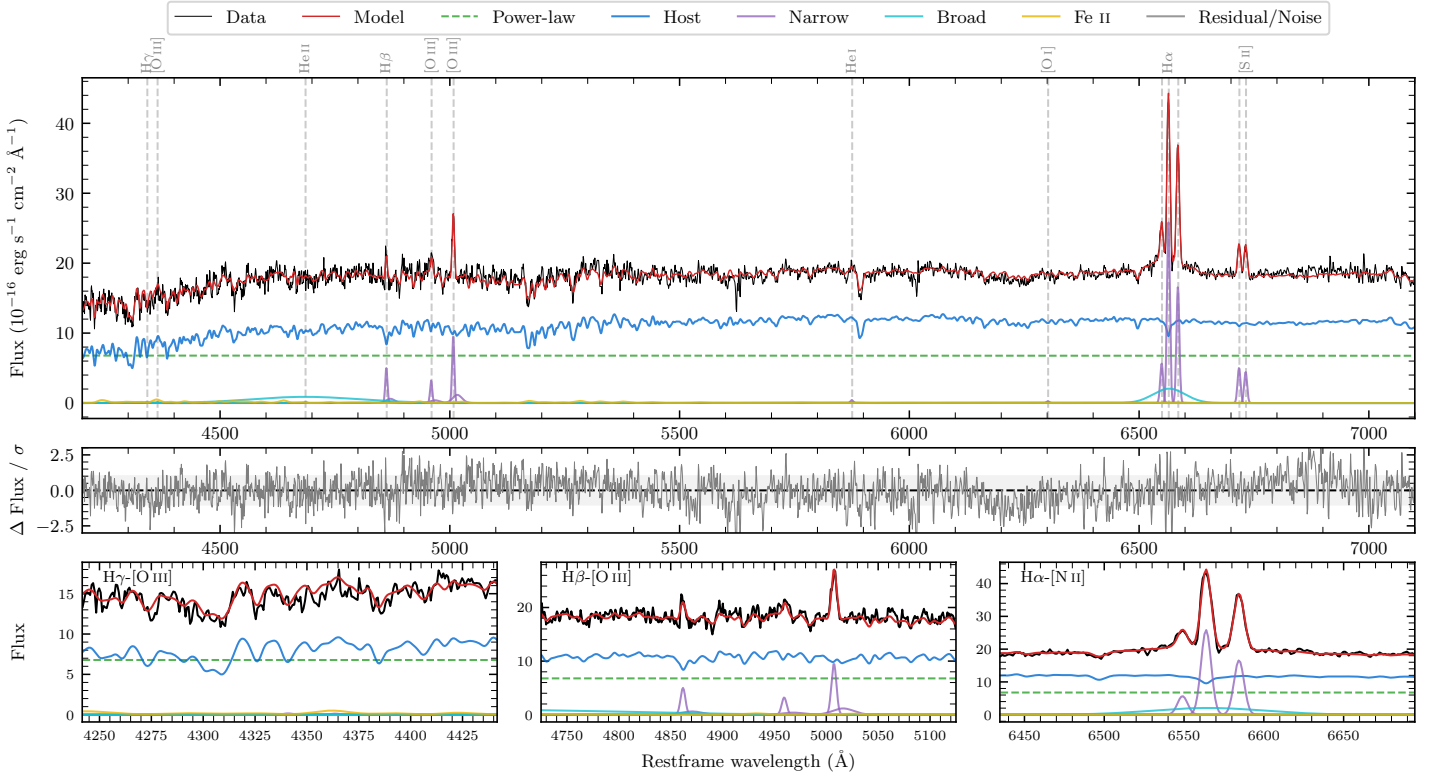
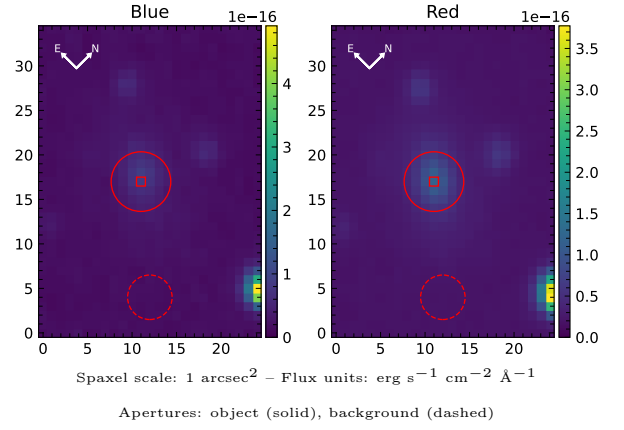


LEDA 4684523

Spectrum ID	259395143_sp1	Spectrum type	Sy 1.5+
Alt name	g1930100-223921	Quality flag	good
z	0.0471	AGN reference	6dFGS
RA, Dec	292.5416, -22.6556	MW $E(B - V)$	0.070
MJD	60080.75	Power law α_ν	-1.99 ± 0.01
SNR/ \AA B/R	20.2/34.7	$\log L_{5100, \text{AGN}}$	43.26 ± 0.01
Obs airmass	1.01	$\log H\beta_{\text{Br}}/[\text{O III}]$	< -0.27
SMSS ID	259395143	$\log M_{L5100}/M_\odot$	—
Neighbour	7.3", 259395149	$\log M_{H\alpha}/M_\odot$	7.02 ± 0.05
SMSS $\langle r_6''_{\text{ap}} \rangle$	15.74 ± 0.03	$\log M_{H\beta}/M_\odot$	—
2MASS K_{ext}	11.44 ± 0.05	$\log M_{[\text{O III}]} / M_\odot$	—



Emission Line Measurements

Line	$\log L$ (erg s ⁻¹)	FWHM (km s ⁻¹)	σ (km s ⁻¹)	EW (Å)
H γ Narrow	—	—	—	—
Hγ Broad	—	—	—	—
[O III] 4364	—	—	—	—
He II Narrow	—	—	—	—
He II Broad	41.16 ± 0.05	17661 ± 62	7500 ± 25	40.25 ± 2.29
H β Narrow	40.38 ± 0.05	363 ± 63	446 ± 36	6.82 ± 0.58
Hβ Broad	< 40.41	—	—	—
[O III] 5007	40.68 ± 0.03	363 ± 63	446 ± 36	13.47 ± 0.60
He I Narrow	39.23 ± 0.30	341 ± 62	144 ± 25	0.48 ± 0.21
He I Broad	—	—	—	—
[O I] 6300	39.04 ± 0.39	341 ± 62	144 ± 25	0.31 ± 0.20
H α Narrow	41.05 ± 0.01	341 ± 62	144 ± 25	31.60 ± 0.29
Hα Broad	41.01 ± 0.03	3629 ± 122	1368 ± 25	28.37 ± 0.77
[N II] 6585	40.86 ± 0.01	341 ± 62	144 ± 25	20.37 ± 0.26
[S II] 6718	40.35 ± 0.02	341 ± 62	144 ± 25	6.28 ± 0.22
[S II] 6732	40.30 ± 0.03	341 ± 62	144 ± 25	5.58 ± 0.23

Emission Summary

H α broad SNR	2.52
H β broad SNR	0.00
H γ broad SNR	0.00
AGN frac	0.40
Host frac	0.60
$\log L_{5100, \text{Host}}$	43.44
Fe II/H β	—
Fe II/[O III]	0.68

Quality Flags

spurious_hab/hbb	0/0
15100	1
balmer	2
balmer_snr	2
hb_width	2
balmer_width	2