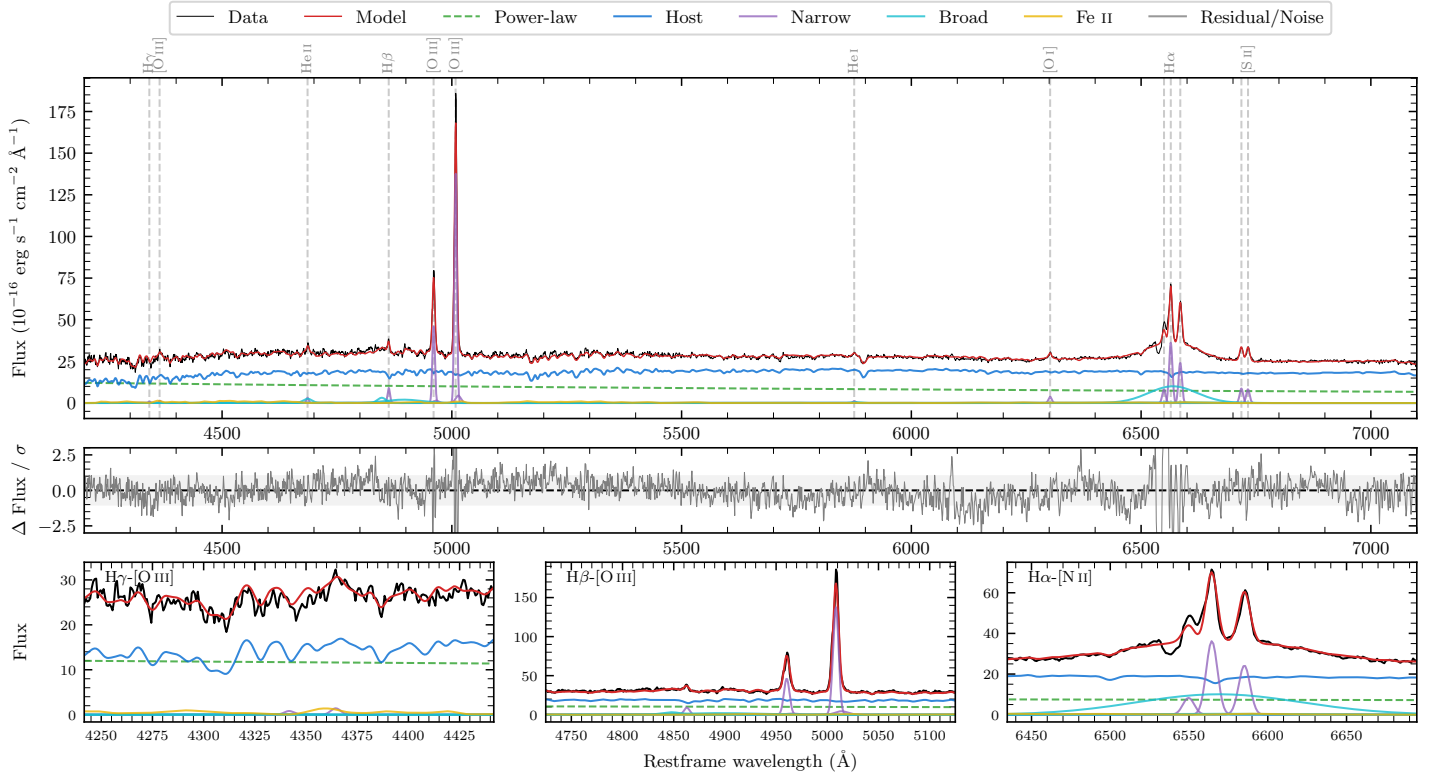
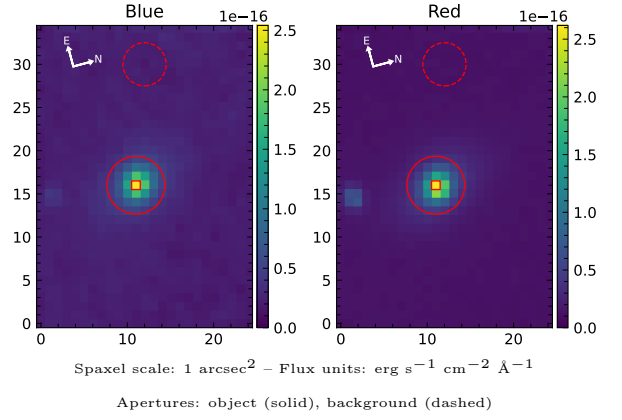


# LEDA 1076753

Spectrum ID	25268216_sp1	Spectrum type	Sy 1.8
Alt name	g0446568-030512	Quality flag	good
$z$	0.0313	AGN reference	6dFGS
RA, Dec	71.7364, -3.0866	MW $E(B - V)$	0.045
MJD	60589.74	Power law $\alpha_\nu$	$-0.88 \pm 0.07$
SNR/ $\text{\AA}$ B/R	18.3/33.7	$\log L_{5100, \text{AGN}}$	$43.05 \pm 0.02$
Obs airmass	1.14	$\log H\beta_{\text{Br}}/[\text{O III}]$	$-0.56 \pm 0.04$
SMSS ID	25268216	$\log M_{L5100}/M_\odot$	—
Neighbour	9.6", 25268215	$\log M_{\text{H}\alpha}/M_\odot$	$7.71 \pm 0.04$
SMSS $\langle r_6''_{\text{ap}} \rangle$	$15.22 \pm 0.04$	$\log M_{\text{H}\beta}/M_\odot$	—
2MASS $K_{\text{ext}}$	$11.39 \pm 0.08$	$\log M_{[\text{O III}]} / M_\odot$	—



## Emission Line Measurements

Line	$\log L$ (erg s $^{-1}$ )	FWHM (km s $^{-1}$ )	$\sigma$ (km s $^{-1}$ )	EW (Angstroms)
H $\gamma$ Narrow	—	—	—	—
<b>H<math>\gamma</math> Broad</b>	—	—	—	—
[O III] 4364	$39.29 \pm 0.33$	$389 \pm 63$	$164 \pm 25$	$0.76 \pm 0.40$
He II Narrow	$39.68 \pm 0.18$	$389 \pm 63$	$164 \pm 25$	$1.98 \pm 0.37$
<b>He II Broad</b>	<b><math>40.18 \pm 0.12</math></b>	<b><math>1442 \pm 90</math></b>	<b><math>612 \pm 37</math></b>	<b><math>5.97 \pm 0.73</math></b>
H $\beta$ Narrow	$40.18 \pm 0.05$	$391 \pm 63$	$201 \pm 29$	$6.47 \pm 0.48$
<b>H<math>\beta</math> Broad</b>	<b><math>40.81 \pm 0.04</math></b>	—	<b><math>2076 \pm 32</math></b>	<b><math>27.71 \pm 1.49</math></b>
[O III] 5007	$41.37 \pm 0.01$	$391 \pm 63$	$201 \pm 29$	$104.71 \pm 0.61$
He I Narrow	$39.34 \pm 0.23$	$389 \pm 63$	$164 \pm 25$	$1.17 \pm 0.27$
<b>He I Broad</b>	<b><math>39.51 \pm 0.27</math></b>	<b><math>1185 \pm 64</math></b>	<b><math>503 \pm 26</math></b>	<b><math>1.72 \pm 0.46</math></b>
[O I] 6300	$39.88 \pm 0.05$	$389 \pm 63$	$164 \pm 25$	$4.41 \pm 0.31$
H $\alpha$ Narrow	$40.88 \pm 0.01$	$389 \pm 63$	$164 \pm 25$	$45.62 \pm 0.38$
<b>H<math>\alpha</math> Broad</b>	<b><math>41.50 \pm 0.01</math></b>	<b><math>5652 \pm 216</math></b>	<b><math>2109 \pm 76</math></b>	<b><math>194.72 \pm 1.30</math></b>
[N II] 6585	$40.70 \pm 0.02$	$389 \pm 63$	$164 \pm 25$	$30.73 \pm 0.36$
[S II] 6718	$40.27 \pm 0.02$	$389 \pm 63$	$164 \pm 25$	$11.62 \pm 0.36$
[S II] 6732	$40.24 \pm 0.02$	$389 \pm 63$	$164 \pm 25$	$11.01 \pm 0.35$

## Emission Summary

H $\alpha$ broad SNR	6.64
H $\beta$ broad SNR	2.61
H $\gamma$ broad SNR	0.00
AGN frac	0.35
Host frac	0.65
$\log L_{5100, \text{Host}}$	43.31
Fe II/H $\beta$	0.90
Fe II/[O III]	0.24

## Quality Flags

spurious_hab/hbb	0/0
15100	1
balmer	1
balmer_snr	2
hb_width	2
balmer_width	2